



# Enhancing biodiversity conservation and ecosystem resilience in dry forest ecosystems

**Kristin Brunk**

Postdoc

K. Lisa Yang Center for Conservation Bioacoustics

NASA BEF - September 21, 2022

# Objectives

---



## Meet the team



**M Zach Peery**  
**Zuzana Burivalova**  
Anu Kramer



**Connor Wood**  
Kristin Brunk



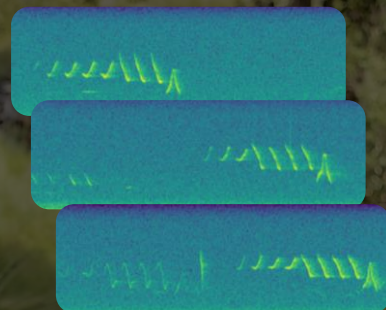
**Van Kane**  
Alina Cansler  
Bryce Bartl-Geller  
Monika Moskal



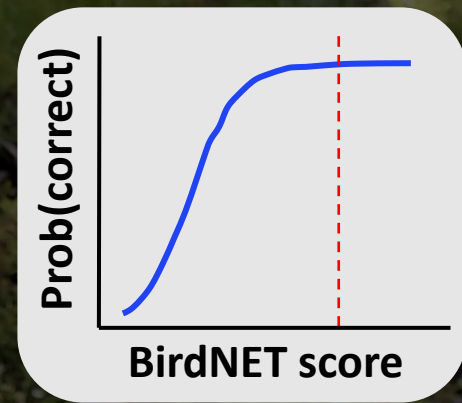
**Sarah Sawyer**  
Malcolm North  
John Keane



**Sarah Stock**



Process recordings using BirdNET to identify target species signals



Manually validate a subset of detections, set post-processing thresholds to define a 'detection'



We have collected and processed over 1 million hours of audio data from across 22,000 km<sup>2</sup> of the Sierra Nevada.





● Unoccupied  
● Occupied

0 50 100  
Kilometers



Danny Hofstadter



Keenan Yako



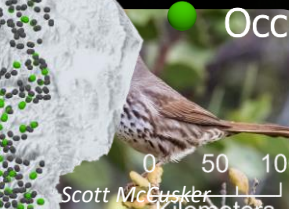
Steve Rottenborn



Robert Past



Matthew Plan



Scott McCusker



Ian Davies



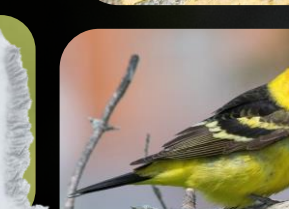
Luke Seitz



Ilya Povalyaev



Paul



Simon Boivin



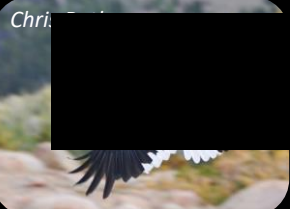
Dorian Anderson



Mark Dal



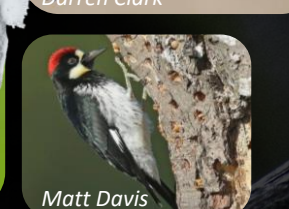
Darren Clark



Chri



Joshua Covill



Matt Davis

unoccupied

Occupied

0 50 100  
Kilometers

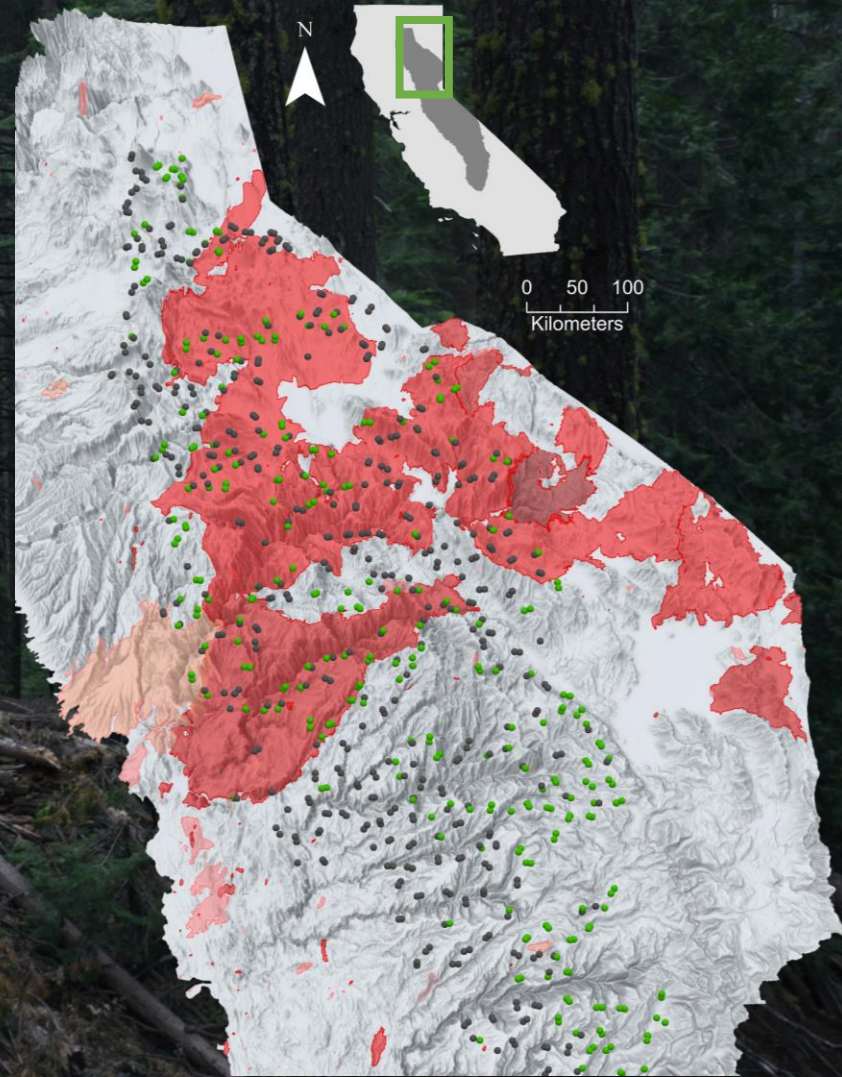


Danny Hofstadter

Compiled over 140  
habitat metrics

Begun comparing sets  
of habitat metrics

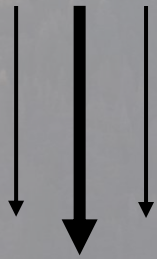
Met with federal  
agencies to begin  
conversations with  
end-users



# Next steps



Relate alpha diversity of ~80 species and occupancy of 8 focal species to remotely sensed habitat characteristics



Use modeled relationships to inform the forecasting tool

Continued dialogue with end-users to integrate managers' needs into the forecasting tool



# Next steps



Relate alpha diversity of ~80 species and occupancy of 8 focal species to remotely sensed habitat characteristics

PI Zach Peery: [mpeery@wisc.edu](mailto:mpeery@wisc.edu)

Speaker: [kb572@cornell.edu](mailto:kb572@cornell.edu)

Use modeled relationships to inform the forecasting tool



Continued dialogue with end-users to integrate managers' needs into the forecasting tool