

# “Smallholder” elephants are struggling and need more attention

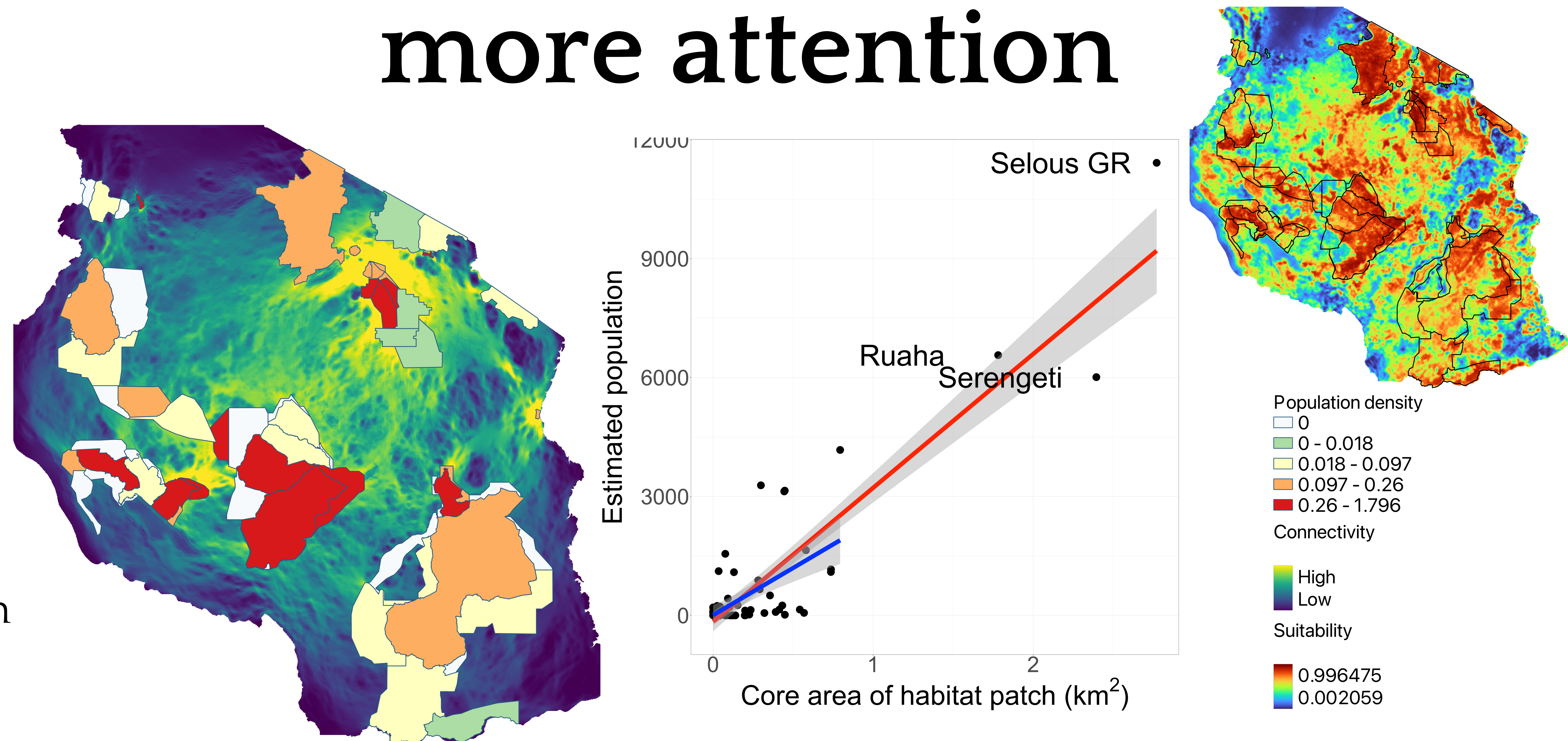
Using an integrated multi-scale structure to characterize landscape utilization and conservation status of African savanna elephant

Lei Song<sup>1</sup>  
[lsong@clarku.edu](mailto:lsong@clarku.edu)  
<https://github.com/LLeiSong>

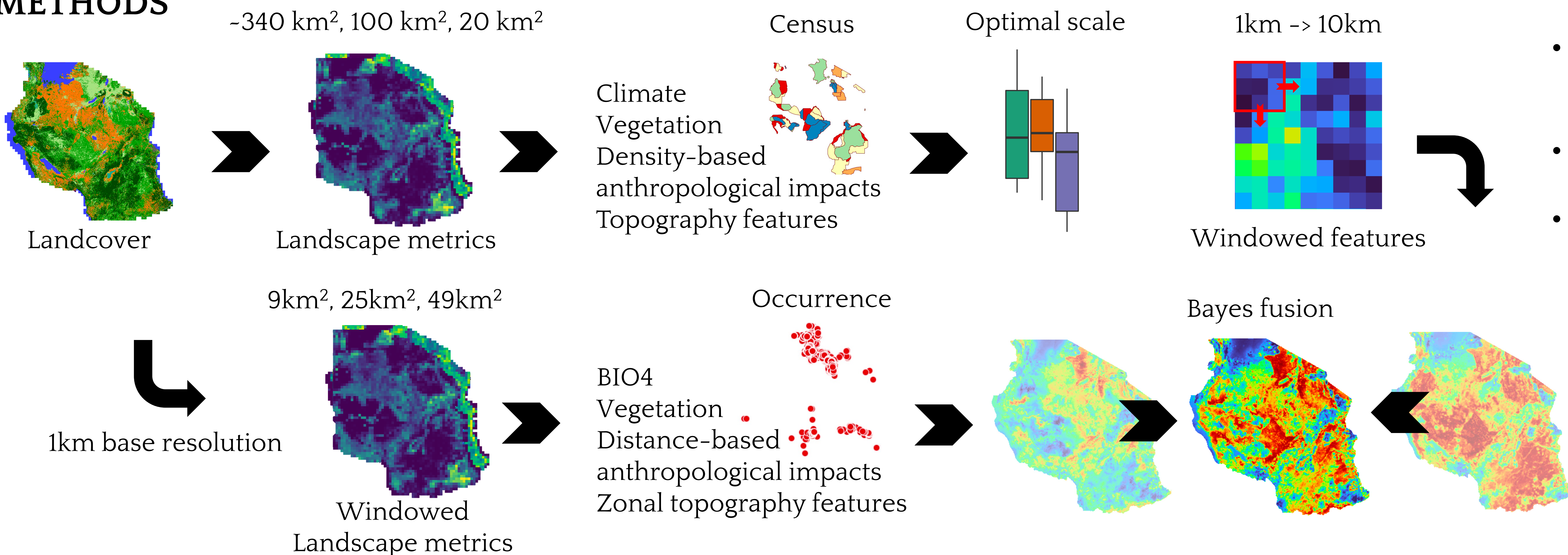
**Co-authors:** Lyndon Estes<sup>1</sup>, Anna Estes<sup>2</sup>  
<sup>1</sup>Clark University, Worcester, MA  
<sup>2</sup>Carleton College, Northfield, MN

## INTRO

A lot of efforts have been investigated into elephant tracking and census. National-level analysis, however, is lacking due to multiple reasons. In this project, a detailed description of landscape utilization was made by using a very high-resolution land cover map.



## METHODS



## TAKE HOME MESSAGE

- In Tanzania, elephants like fragmented and mosaic landscapes.
- The availability of trees is critical for elephants' survival.
- Small patches have the potential to host more population.

This work is supported by the Future Investigators in NASA Earth and Space Science and Technology (FINESST) program (award number: 80NSSC20K1640).

