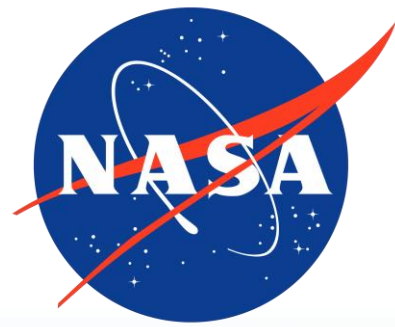
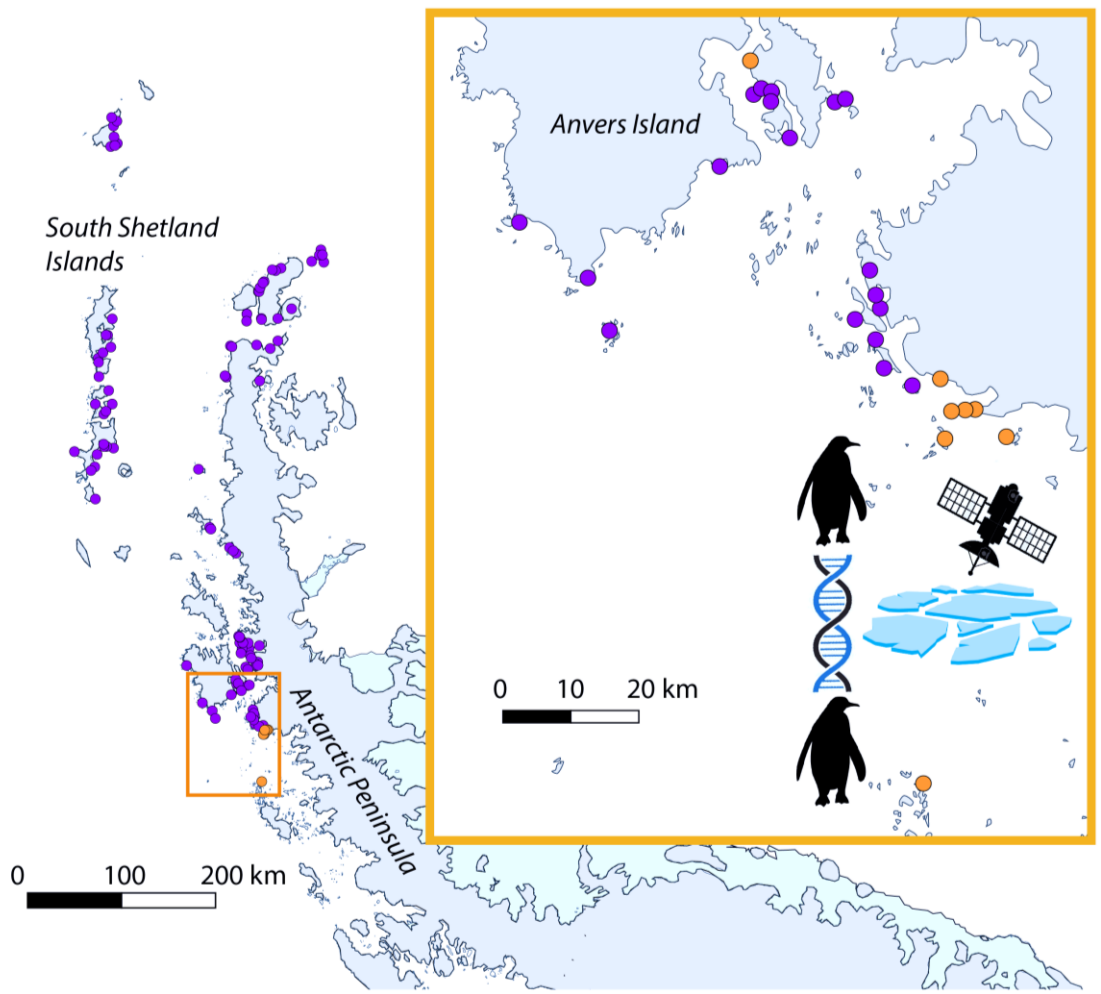
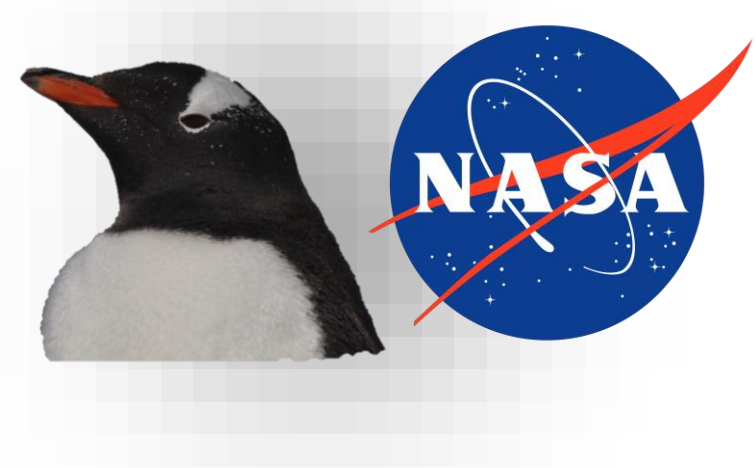
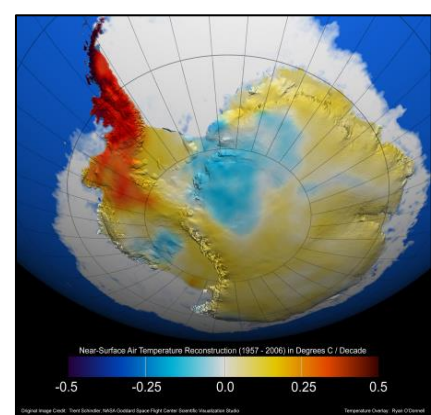


# Population Structure and Demography of *Gentoo Penguins* (*Pygoscelis papua*) in an Area of Range Expansion

Rachael Herman (FI) and Heather Lynch (PI) – Stony Brook University

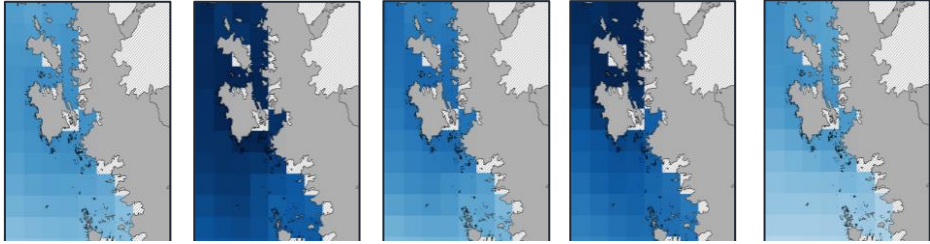




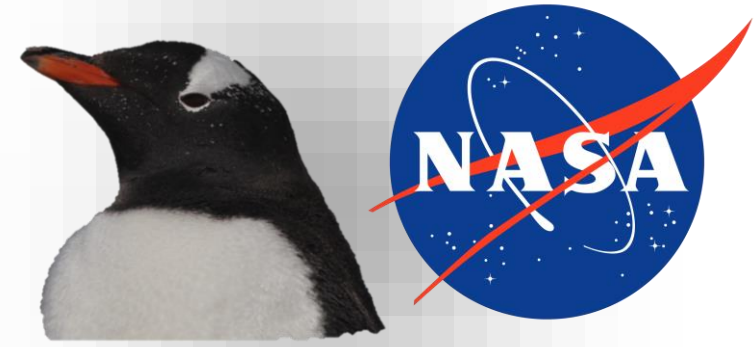
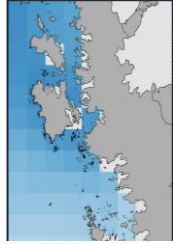
Sea ice Concentration



1995



2015



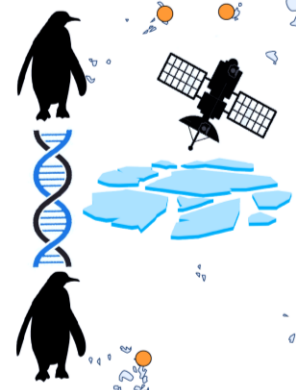
South Shetland Islands

Anvers Island

Antarctic Peninsula

0 100 200 km

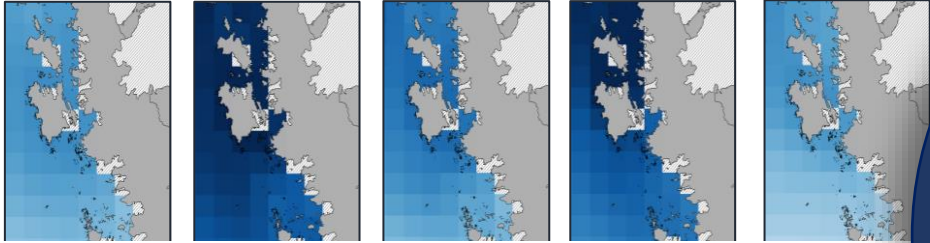
0 10 20 km



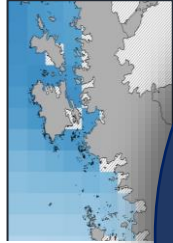
Sea ice Concentration



1995



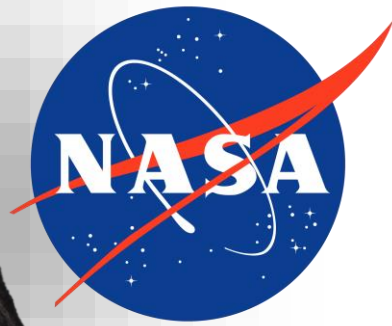
2015



## OBJECTIVES

Use genomic methods to:

1. Determine how colonies within the area of range expansion are related
2. Identify source populations of newly established colonies
3. Identify potential networks of dispersal that overlap with areas of low sea ice and high lead density.



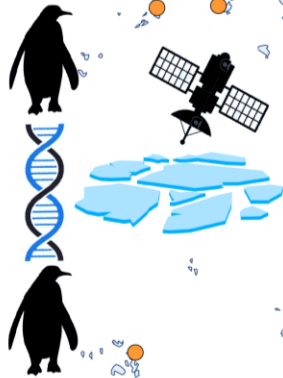
South Shetland Islands

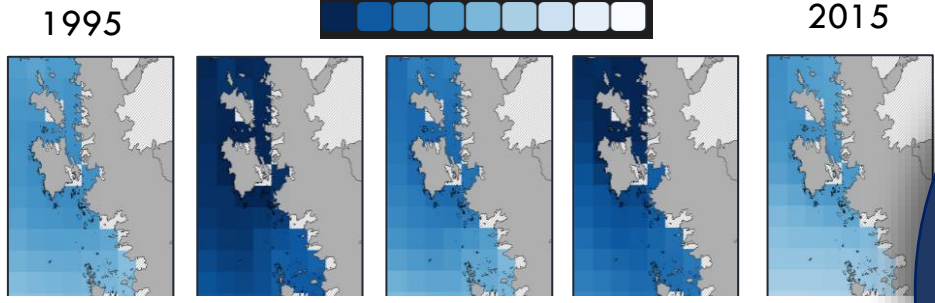
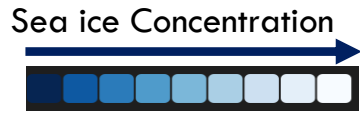
Anvers Island

Antarctic Peninsula

0 10 20 km

0 100 200 km





## OBJECTIVES

Use genomic methods to:

1. Determine how colonies within the area of range expansion are related
2. Identify source populations of newly established colonies
3. Identify potential networks of dispersal that overlap with areas of low sea ice and high lead density.

