

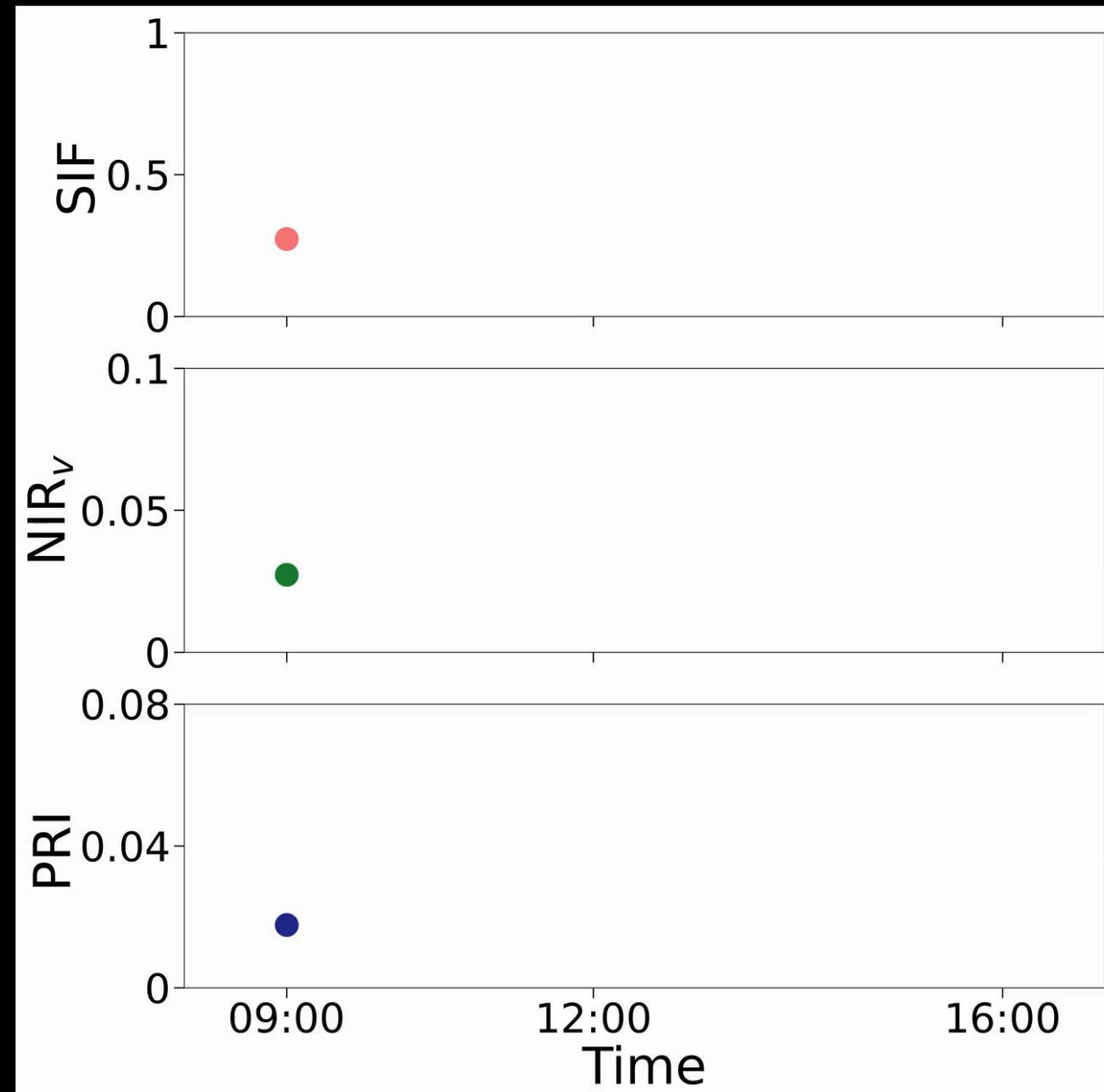
Linking canopy structure and function in a temperate deciduous ecosystem

Andrew Jablonski¹, Manuel Lerdau¹, Xi Yang¹

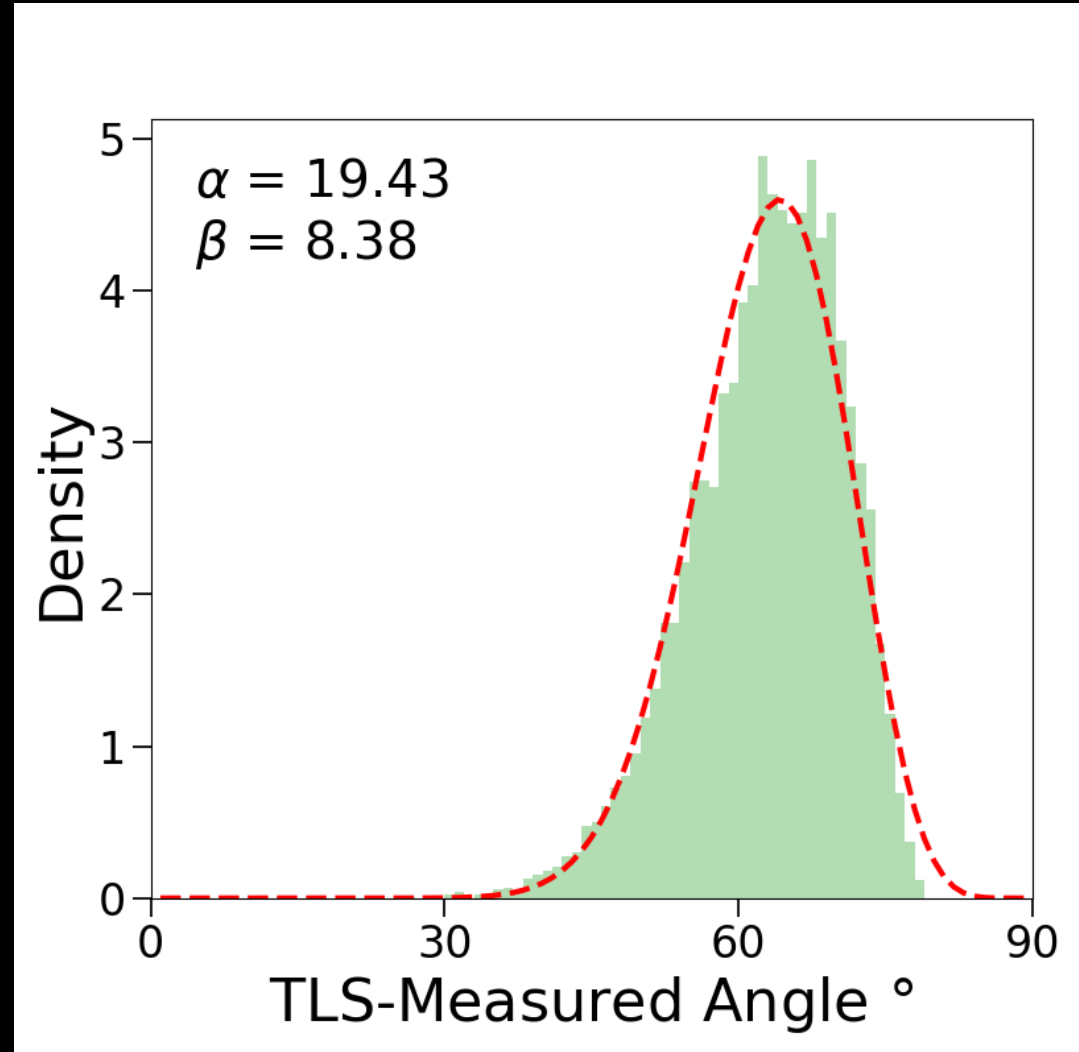
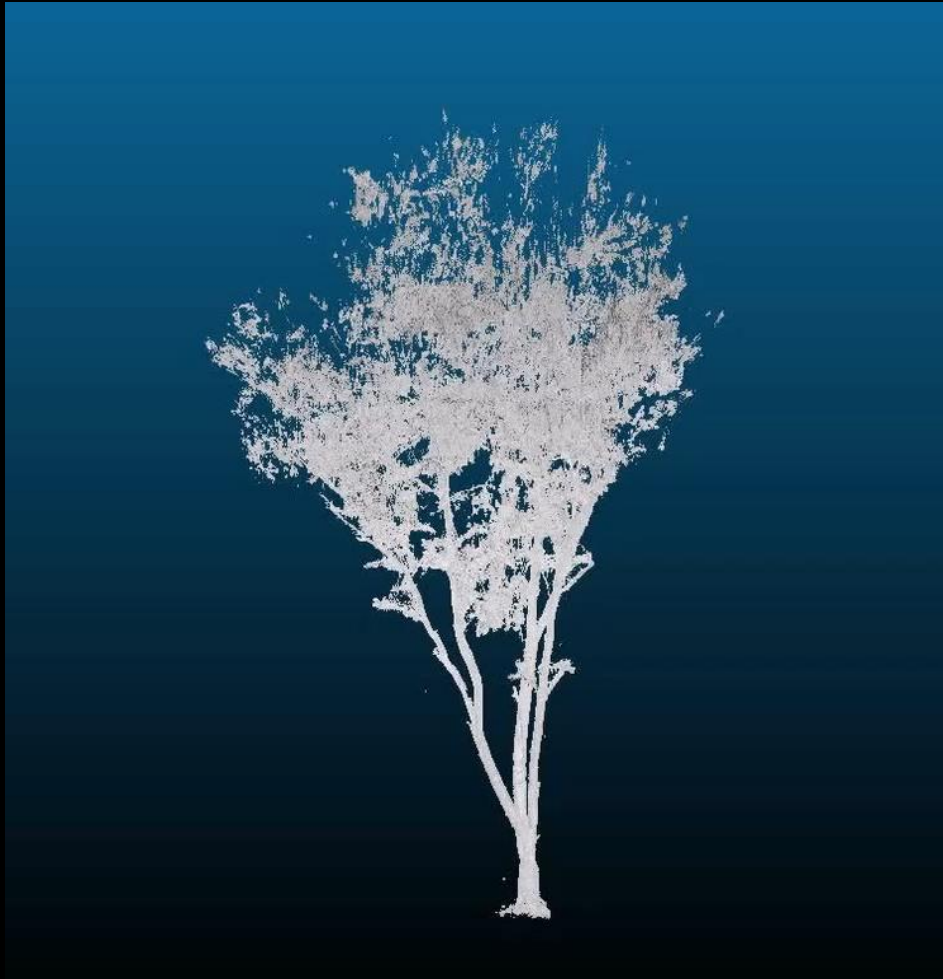
¹*University of Virginia, Department of Environmental Sciences*

FluoSpecAir – tracking spatiotemporal patterns of canopy function from solar-induced chlorophyll fluorescence (SIF) and reflectance spectroscopy data.





3D reconstructions of individual trees using terrestrial laser scanning



Connecting diurnal and seasonal patterns of UAS remote sensing data and foliar traits to TLS-derived canopy structure

