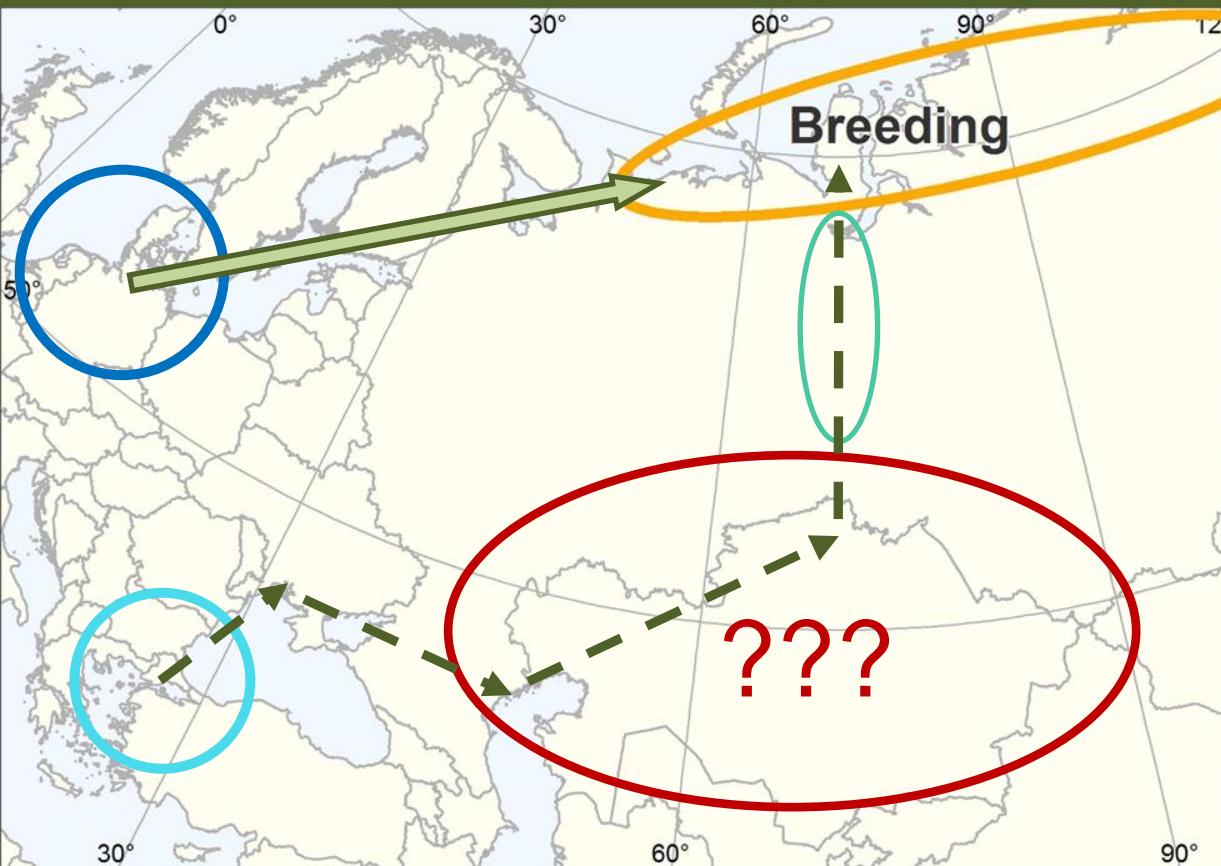


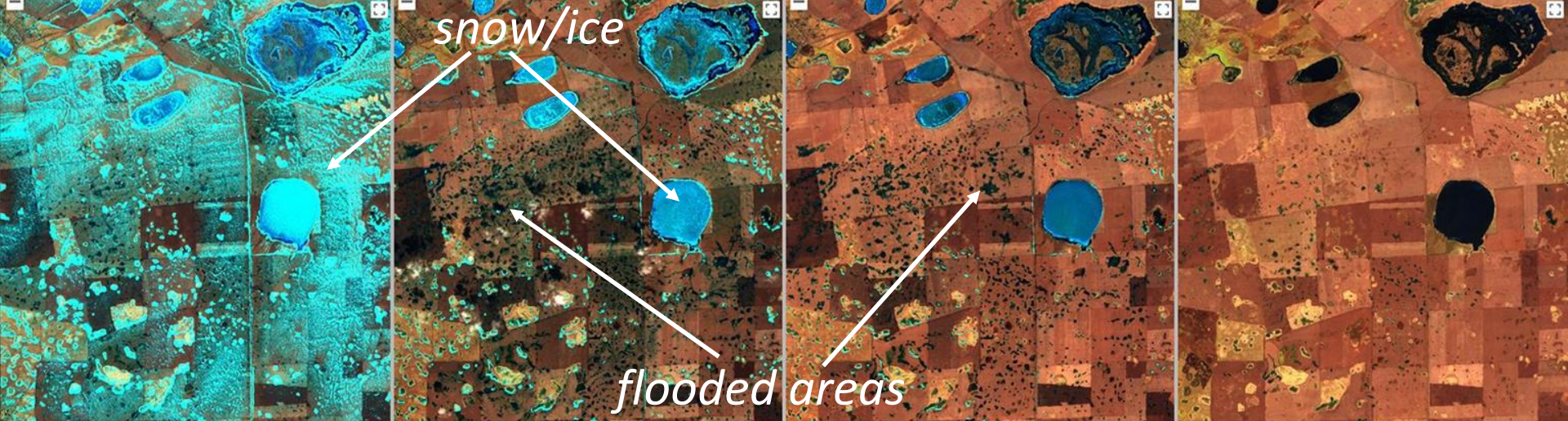
Assessment of Bewick's Swan (*Cygnus columbianus bewickii*) distribution in Eurasian steppe during their spring migration



N. Rogova¹, D. Vangeluw², S. Rozenfeld³, A. M. Pidgeon¹ and V. Radeloff¹

¹University of Wisconsin-Madison, USA; ²Royal Belgian Institute of Natural Sciences;

³Severtsov Institute of Ecology and Evolution.



Sentinel-2 2019/04/01

Sentinel-2 2019/04/06

Sentinel-2 2019/04/11

Sentinel-2 2019/05/04

Копировать | Картографические данные © 2022 | Точка | Угловая проекция | Сокрытие объектов на карте

