

Hot spots in the ice: importance of polynyas for marine ecosystems

(Final year of project)



NASA BDEC meeting – May 29, 2025

Alice DuVivier - duvivier@ucar.edu

Kristen Krumhardt, Laura Landrum, Zephyr Sylvester, Marika Holland, Stephanie Jenouvrier, Sara Labrousse, Alice Eparvier, Michelle LaRue, Bilgecan Sen, Christian Che-Castaldo, Cassandra Brooks



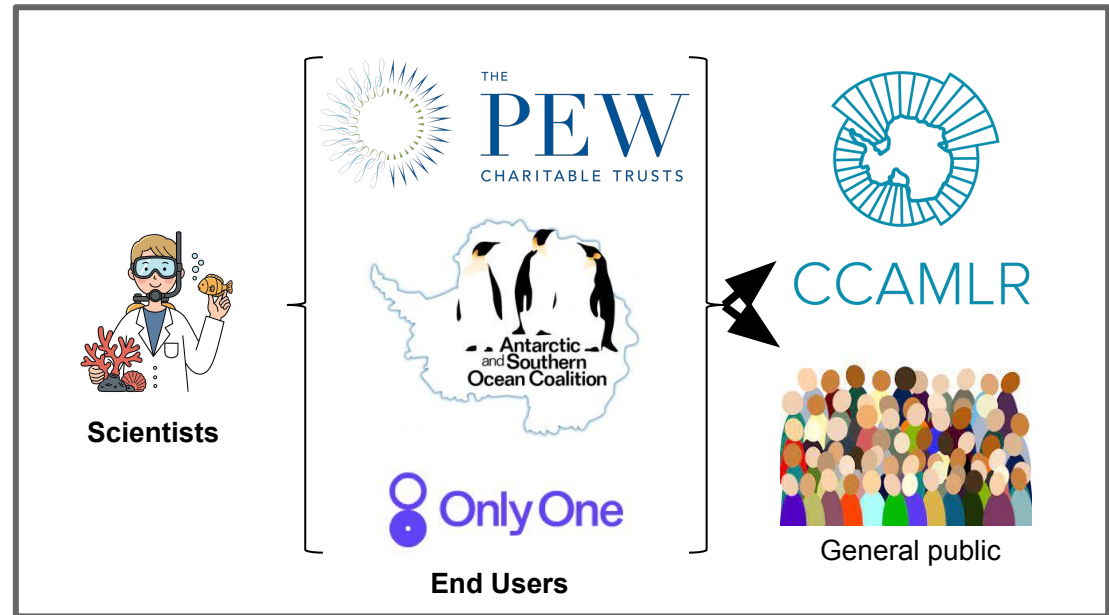
Photo: John Weller

The material is based upon work supported by NASA under award No 80NSSC21K1132. Any opinions, findings, and conclusions or recommendations expressed in this material are those of the author(s) and do not necessarily reflect the views of the National Aeronautics and Space Administration

Antarctic Conservation

- The Commission for the Conservation of Antarctic Marine Living Resources (CCAMLR) is the multi-national body which manages the Southern Ocean
- Process:
 - Consensus based decisions
 - Decisions must be grounded in the “best available science”
 - Science must go through working groups and national delegations in closed meetings

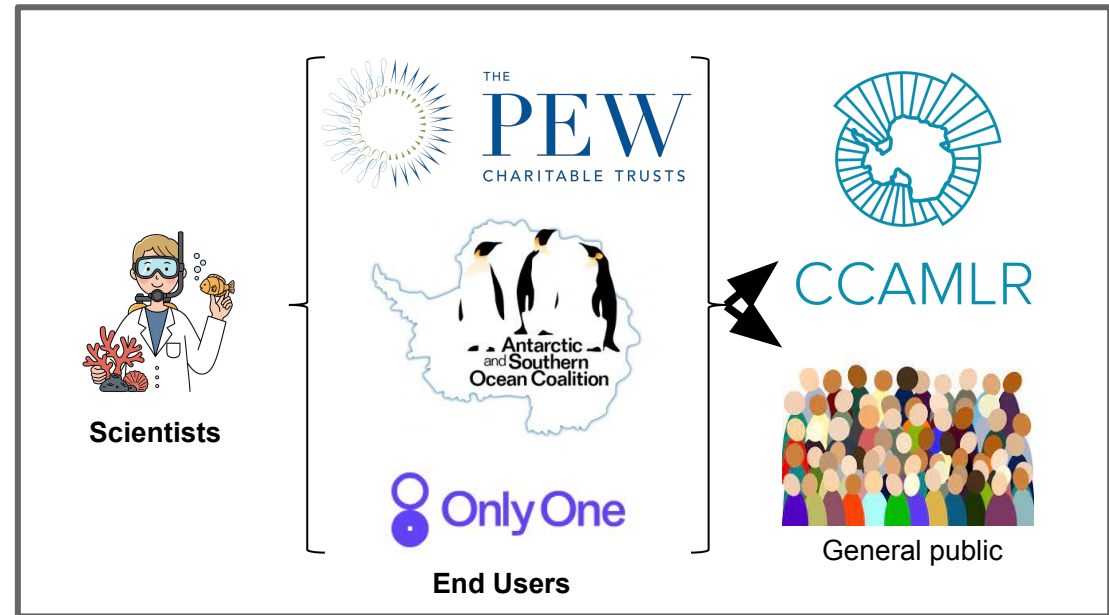
Science-Policy-Public Interface



Antarctic Conservation

- The Commission for the Conservation of Antarctic Marine Living Resources (CCAMLR) is the multi-national body which manages the Southern Ocean
- Process:
 - Consensus based decisions
 - Decisions must be grounded in the “best available science”
 - Science must go through working groups and national delegations in closed meetings

Science-Policy-Public Interface



End-user goals:

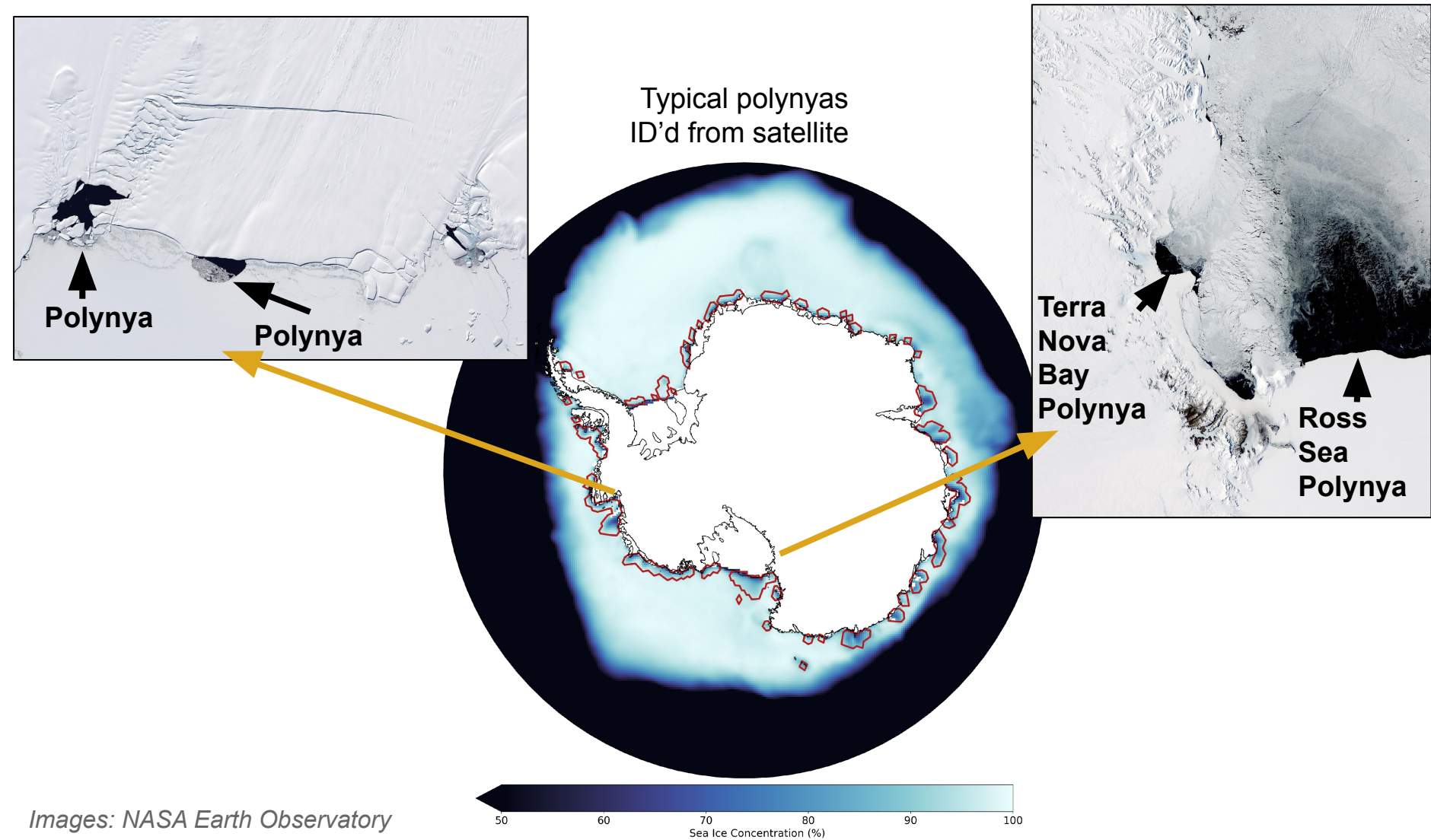
- Contribute “best available science”
- Engage the public
- Influence Member States



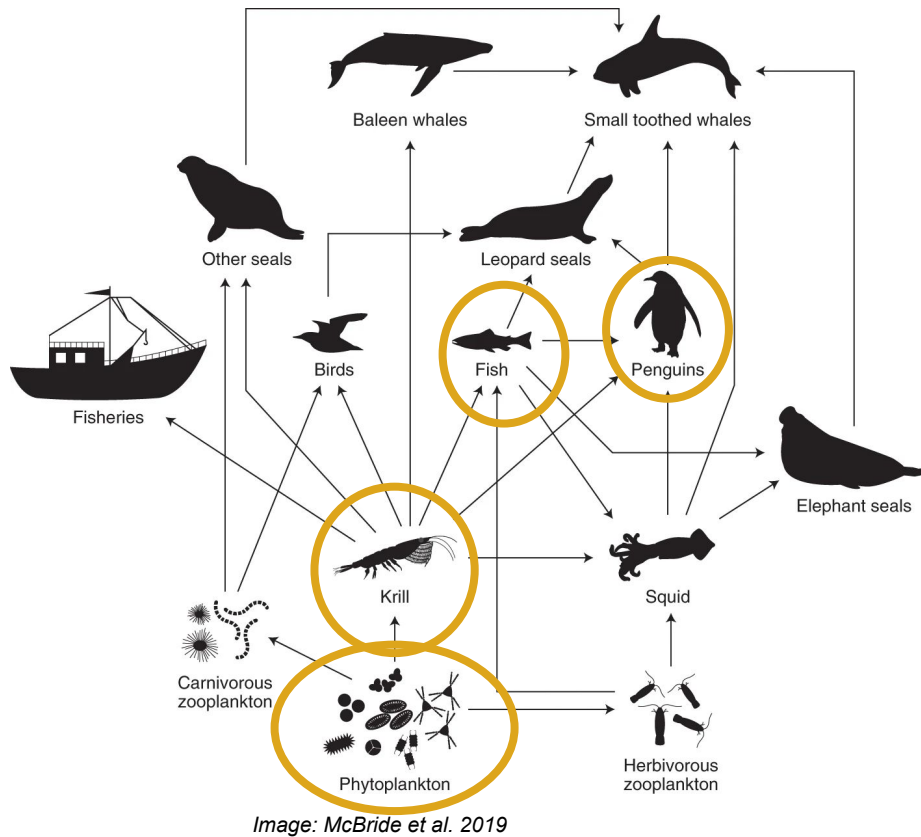
End-user tool:

- 3 audiences – policymakers (CCAMLR), the General Public, Scientists
- Flexible, engaging, compelling
- Web-based

How important are polynyas for the Antarctic ecosystem?




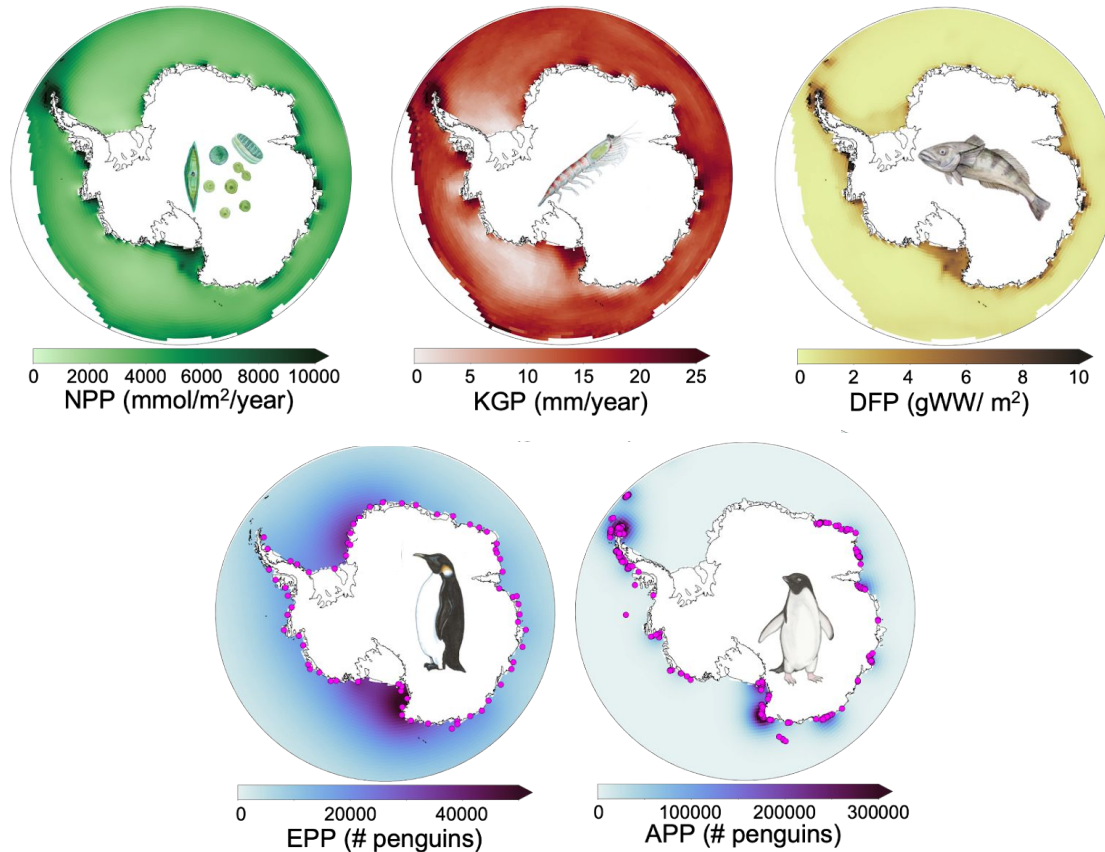
Science Goal: Creating an Antarctic Ecosystem Value (AEV) Index



- Create spatial maps of **Antarctic Ecosystem Value** for management regions to support conservation in present and future.
- Include species at multiple trophic levels.
- Use Earth System Model data, biological models, satellite data.

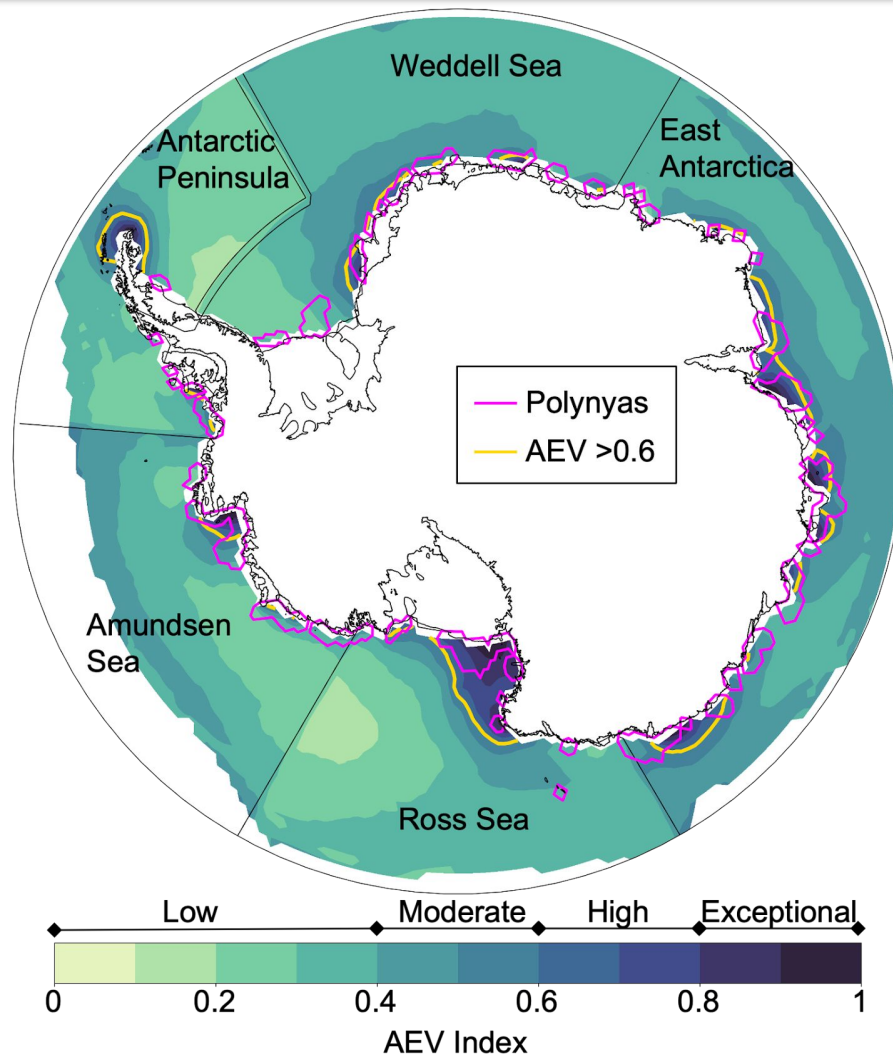
Antarctic Ecosystem Value (AEV) Index inputs


$$AEV_{ij} = \frac{\left(\frac{NPP_{ij}}{NPP_{max_hemi}} + \frac{KGP_{ij}}{KGP_{max_hemi}} + \frac{FD_{ij}}{FD_{max_hemi}} + \frac{EP_{ij}}{EP_{max_hemi}} + \frac{AP_{ij}}{AP_{max_hemi}} \right)}{EI_{max_region}}$$



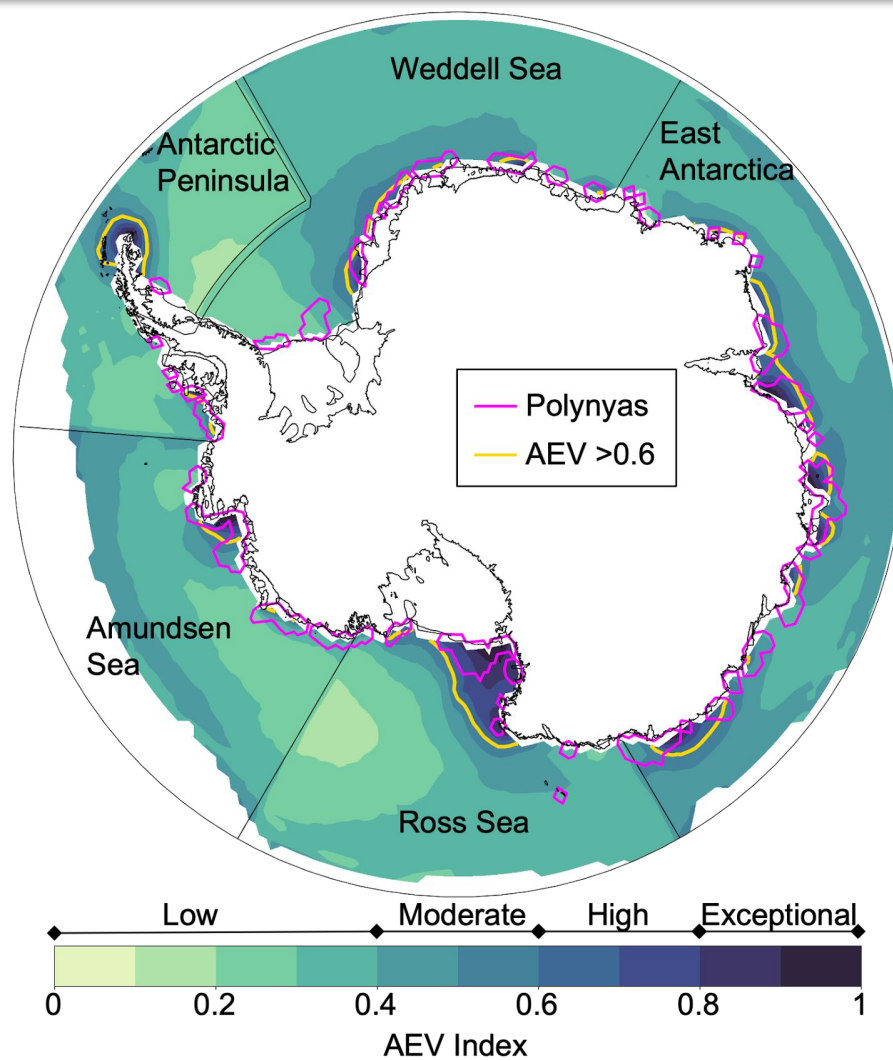
DuVivier et al.
(in revision – Nat. Comm.)

Present Day AEV Index

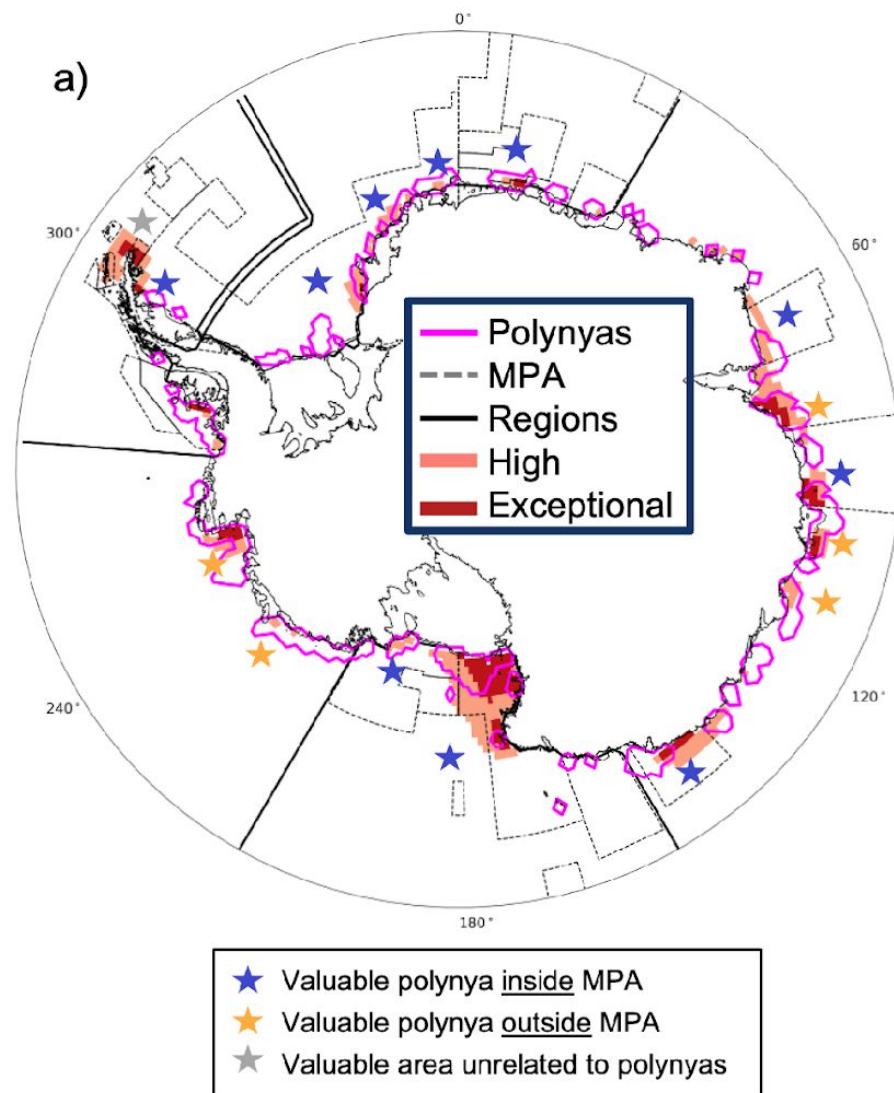


DuVivier et al.
(in revision – Nat. Comm.)

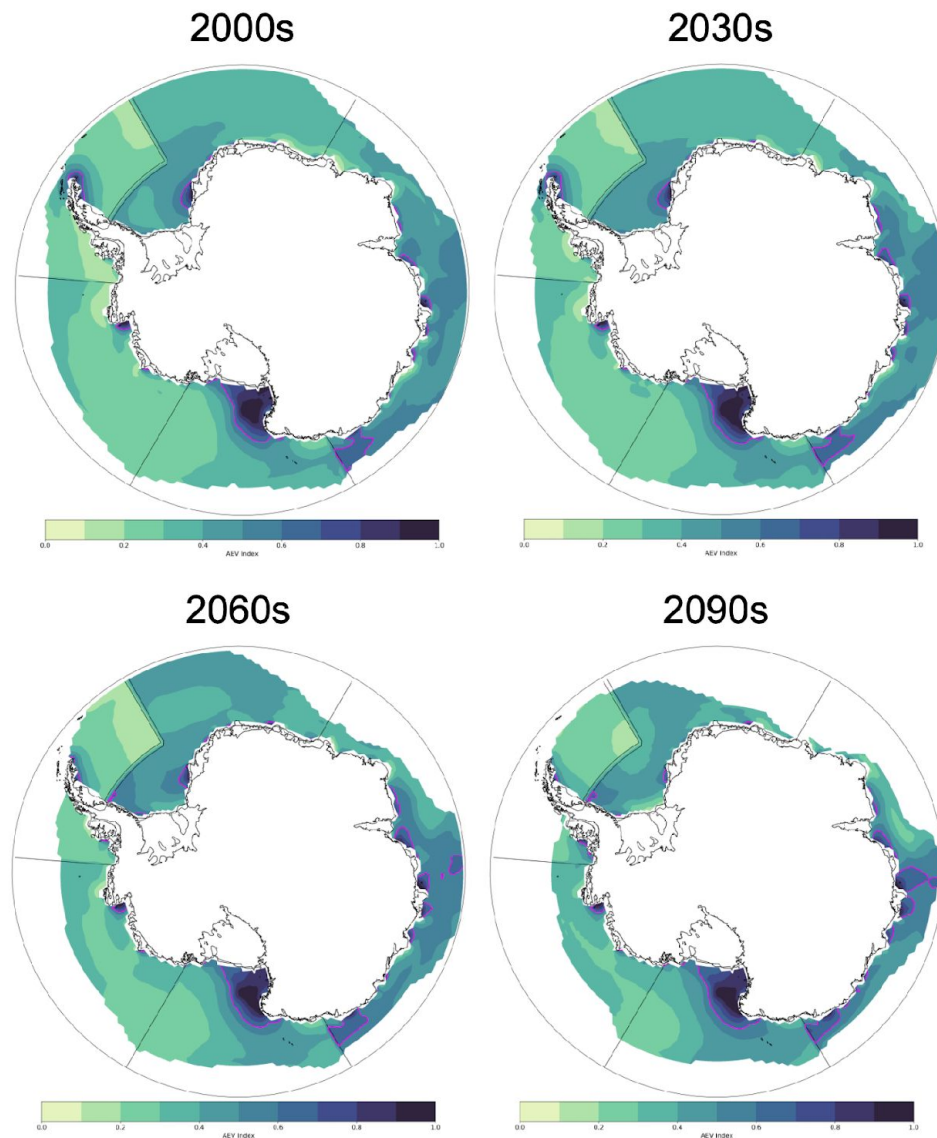
Present Day AEV Index



DuVivier et al.
(in revision – Nat. Comm.)



Future AEV Index



DuVivier et al.
(in revision – Nat. Comm.)

Tool – Beta version

*Maps directed at
policy-maker and
scientist audience
needs.*



Tool – Beta version

*Maps directed at general
public and policy-maker
audience needs with
links to scientific data.*



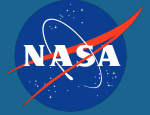
Upcoming Milestones

- Summer 2025
 - OnlyOne finalizing web-tool
 - ShinyApp tool updates
 - Complete science manuscripts
 - 2 in review, 4 in prep
 - CCAMLR Working Group on Ecosystem Monitoring and Management Meeting
 - 2 project attendees, 1 white paper
- September 2025 □ NASA project officially ends
- October 2025
 - Annual CCAMLR meeting
 - Web tool launch/training
 - 2 project attendees, 1 white paper



Photo: John Weller

Thanks for your attention! Questions?



Thanks to the entire science team!

Thanks to NASA for funding!



Alice DuVivier



Laura Landrum



Marika Holland



Kristen Krumhardt



Michelle LaRue



University of Colorado
Boulder



Cassandra Brooks



Zephyr Sylvester



Cara Nissen



Stephanie Jenouvrier



Bilgecan Sen

+ Alice Eparvier



Christian Che-Castaldo



Sara Labrousse



duvivier@ucar.edu

How important are polynyas for the Antarctic ecosystem?

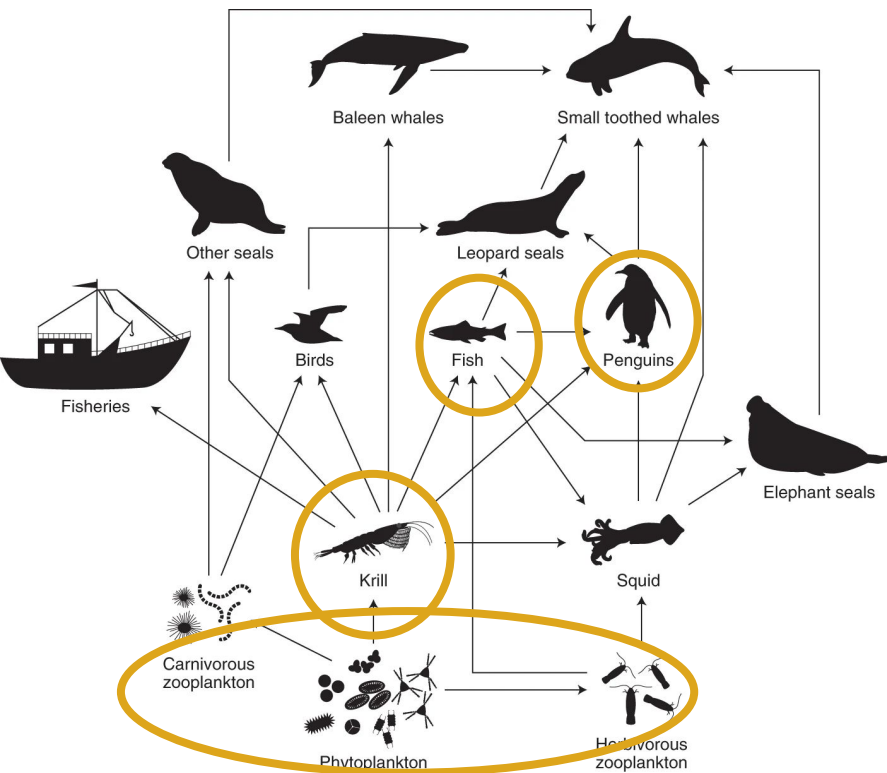


Image: McBride et al. 2019

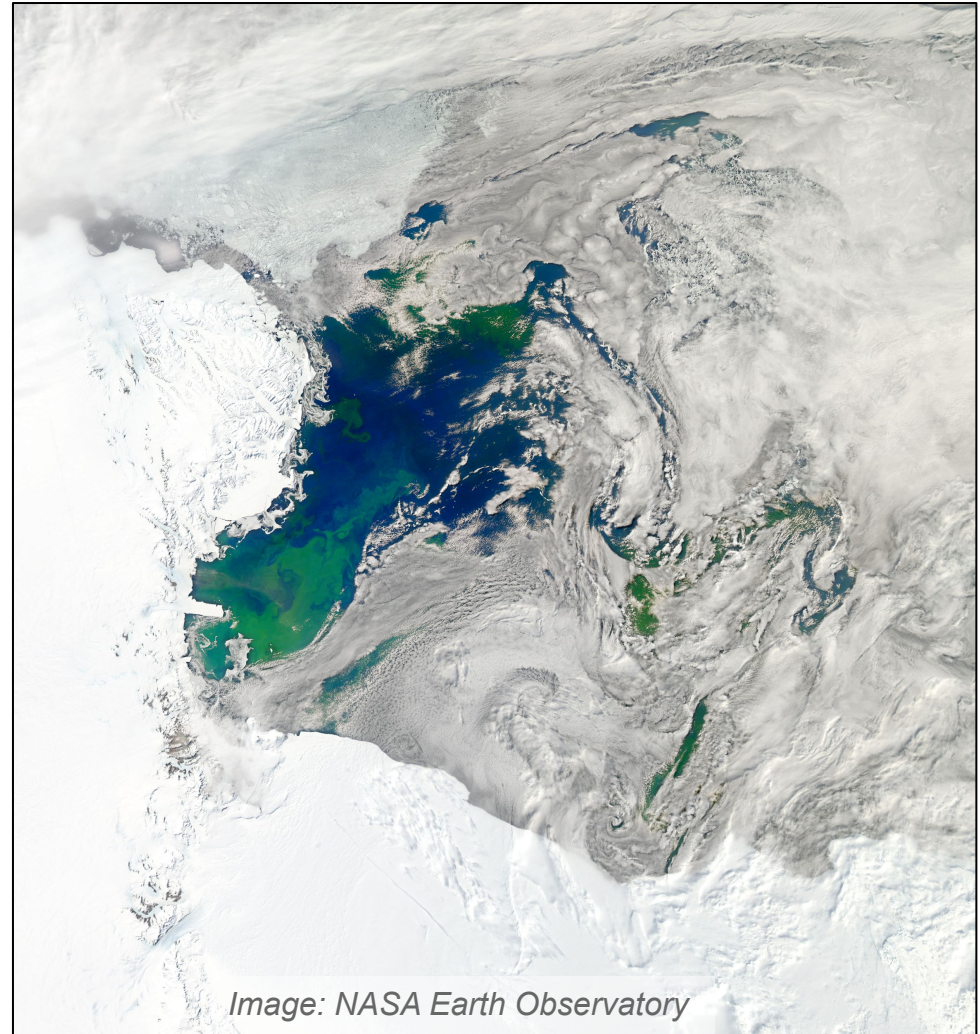


Image: NASA Earth Observatory

How important are polynyas for the Antarctic ecosystem?

Polynya: Area bounded by land or sea ice that has lower sea ice concentration than surrounding region

Terra
Nova Bay
Polynya

Ross Sea
Polynya

Image: NASA Earth Observatory

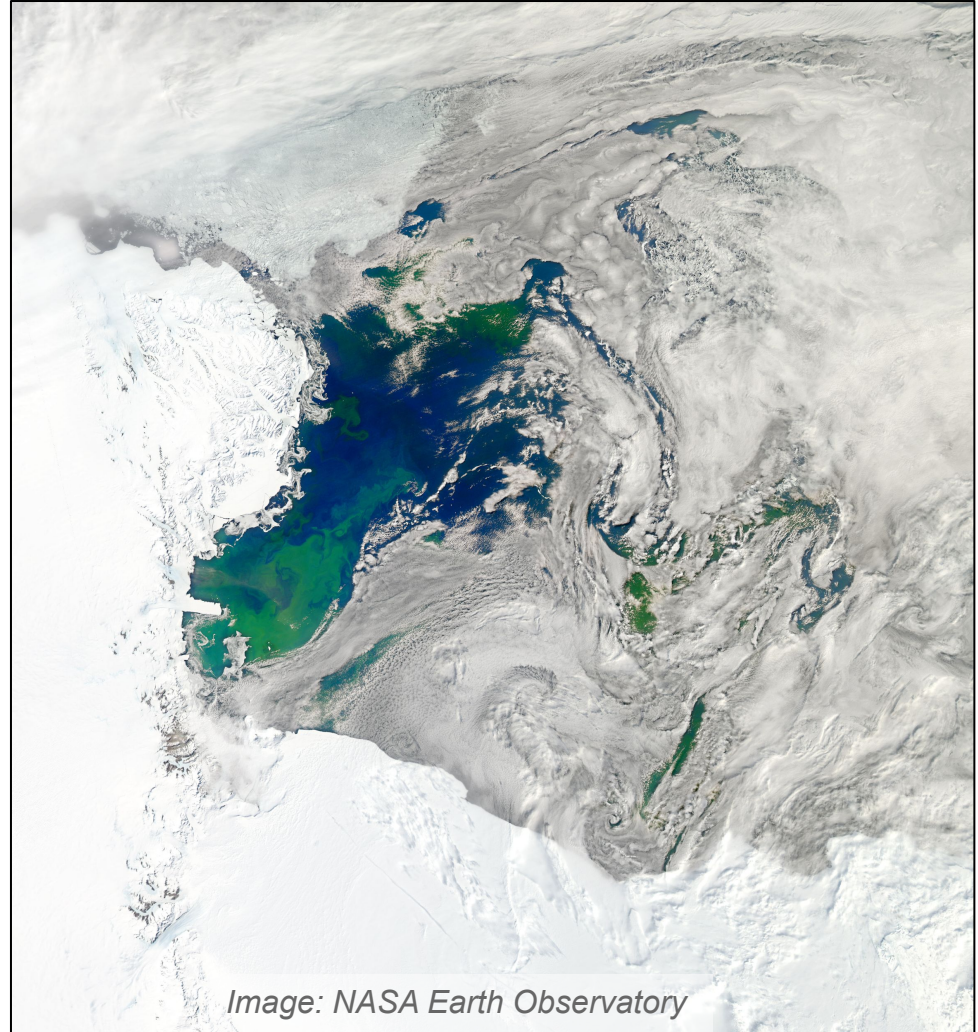
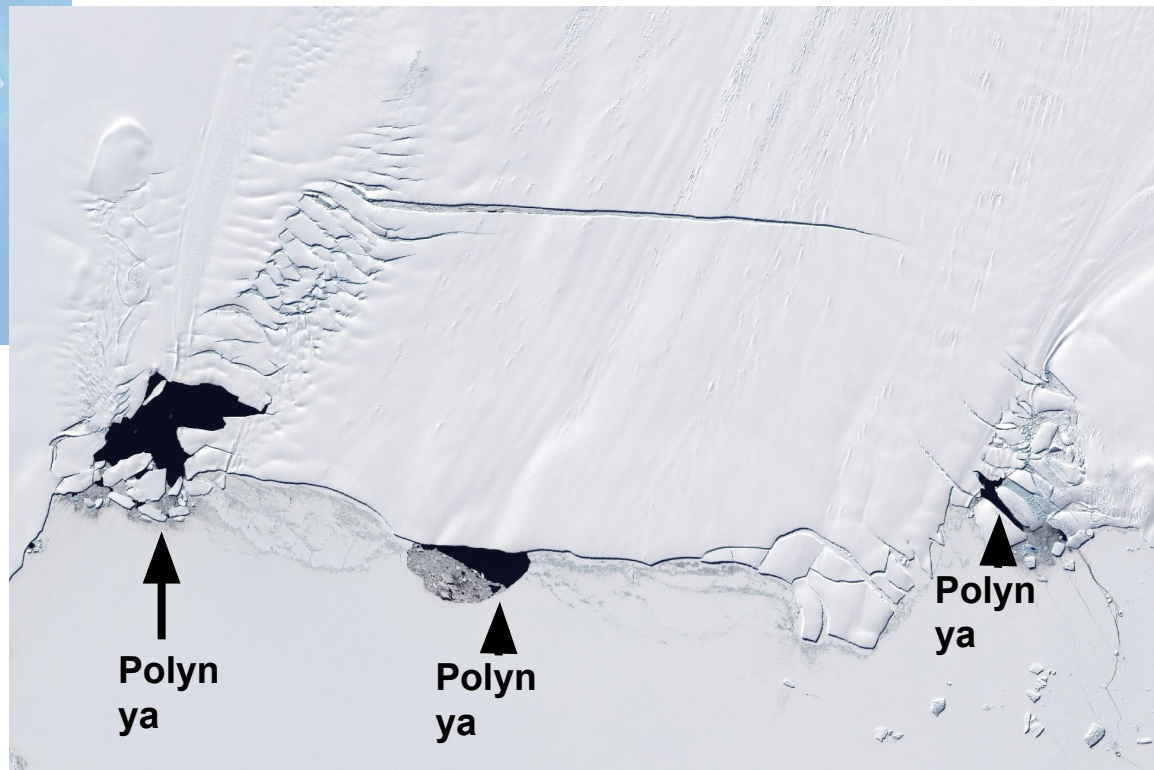


Image: NASA Earth Observatory

Polynyas

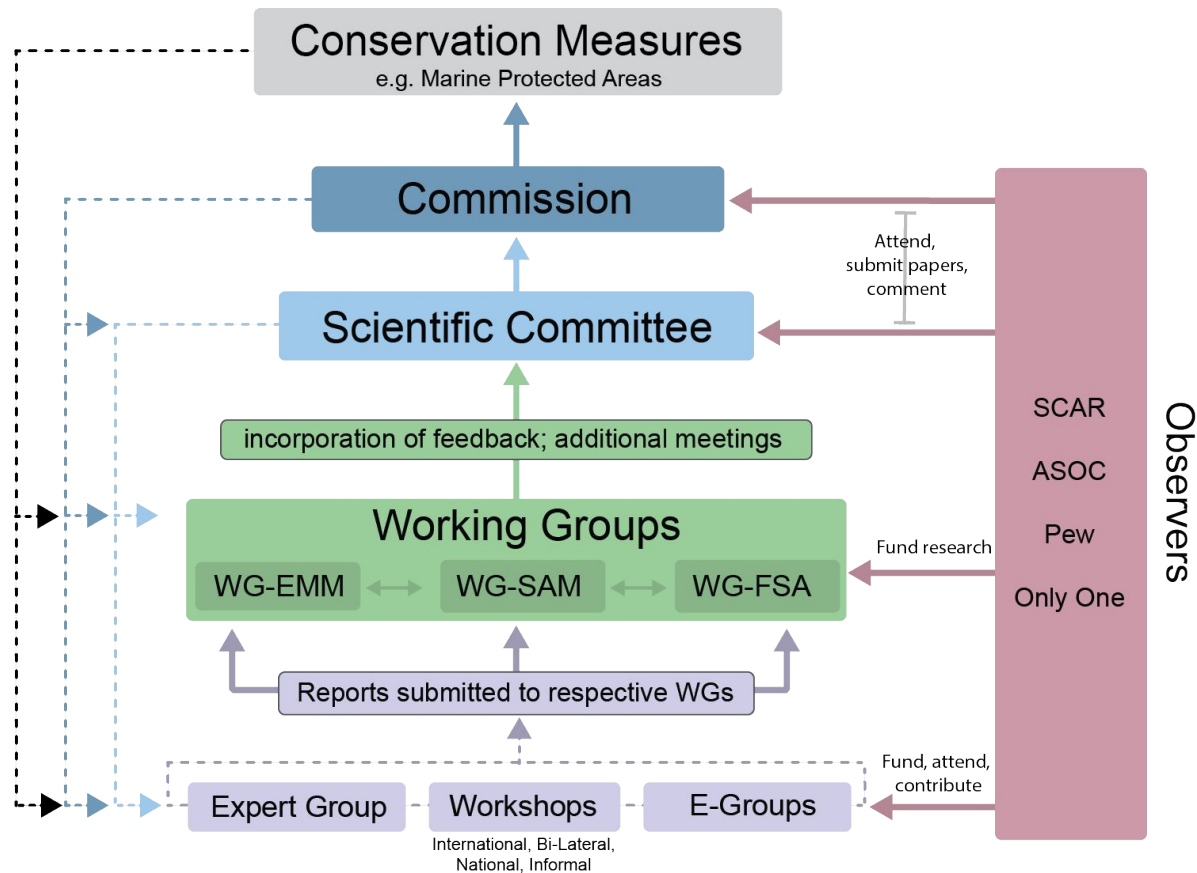


Images: NASA Earth Observatory



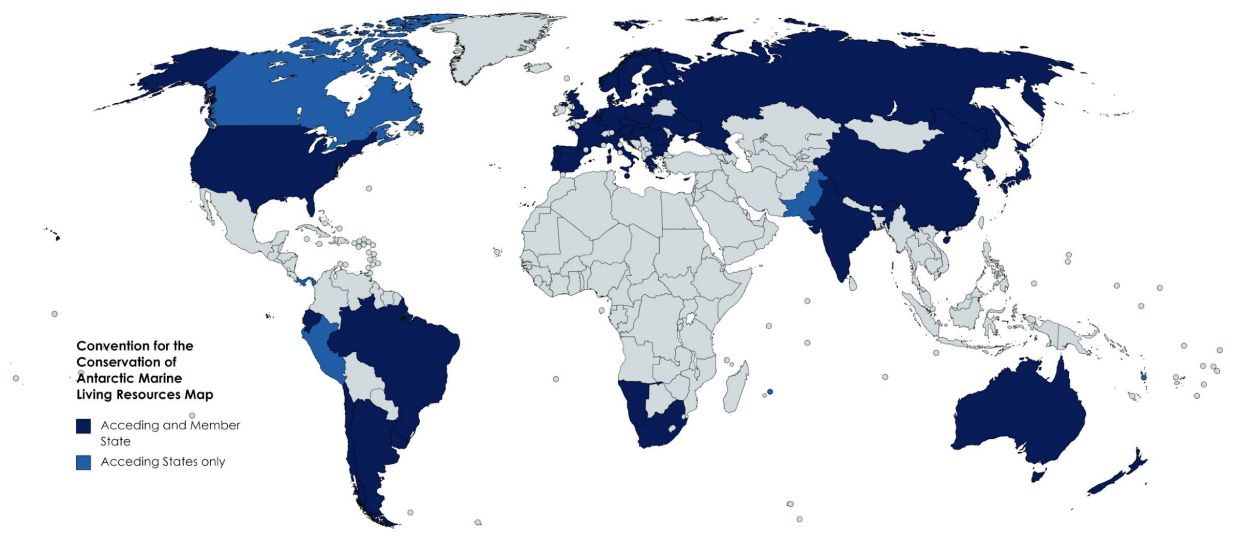
Antarctic Conservation:

- The Commission for the Conservation of Antarctic Marine Living Resources (CCAMLR) is the multi-national body which manages the Southern Ocean.
- According to CCAMLR's legal Convention, management decisions must be grounded in the "best available science"
- To CCAMLR, the "best available science" is defined as the science that comes through its Scientific Committee and Working Groups
- CCAMLR meetings can only be attended by Member State delegates and officially invited observers to CCAMLR.
- Our end-user goals:
 - Contribute "best available science"
 - Engage the public
 - Influence Member States



White papers must be submitted through National delegations to Working Groups. Contributing these papers is a significant step towards contributing to the "best available science".

End User Needs



From Wikipedia

Member states [\[edit \]](#)

Acceding and Member State ^[4]	Acceding States only ^[5]
Argentina	Bulgaria
Australia	Canada
Belgium	Cook Islands
Brazil	Finland
Chile	Greece
China	Mauritius
Ecuador	Pakistan
European Union	Panama
France	Peru
Germany	Vanuatu
India	
Italy	
Japan	
South Korea	
Namibia	
Netherlands	
New Zealand	
Norway	
Poland	
Russia	
South Africa	
Spain	
Sweden	
Ukraine	
United Kingdom	
United States	
Uruguay	

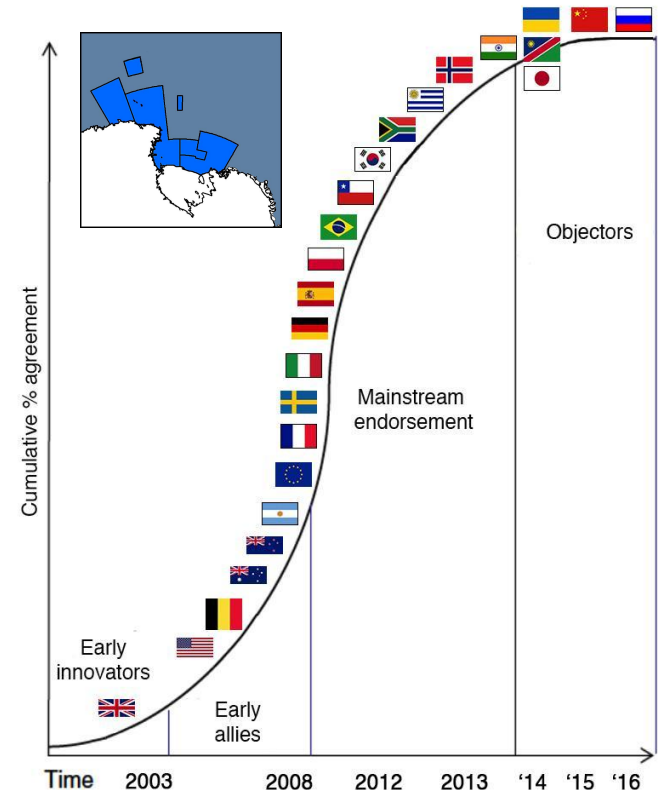
End User Needs

- Adopting any policy (e.g., an MPA) requires unanimous consensus by members of CCAMLR.
- The Antarctic conservation decision-making process is unique and challenging because it is fundamentally political.
- Global geopolitics (e.g., the war in Ukraine) can be major barriers to decision-making



CCAMLR annual meeting plenary (invitation only; Hobart, AU)

Building to consensus for the Ross Sea MPA

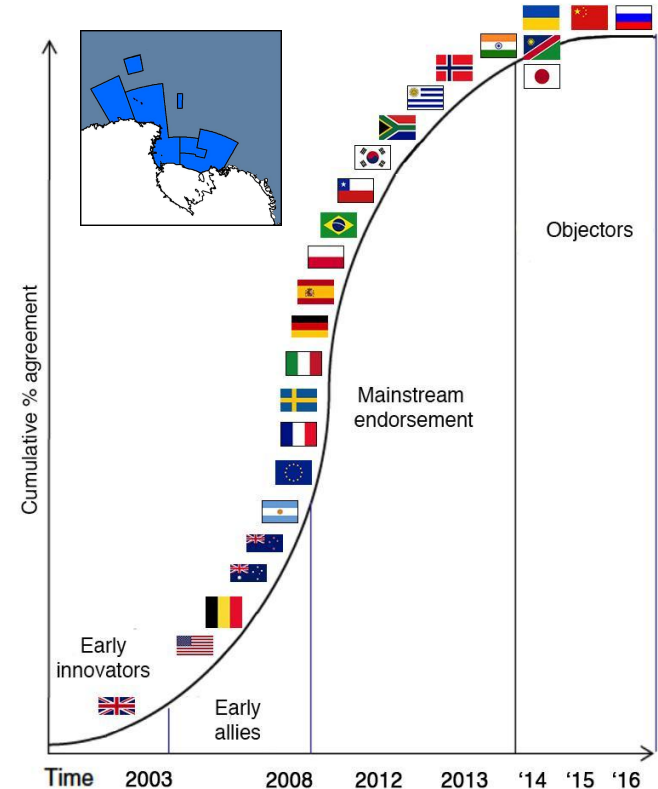


End User Needs

- Ross Sea region MPA adopted in 2016
 - 14 years of scientific discussion & input
 - 12 years of public engagement
 - 5 years of CCAMLR diplomatic negotiations

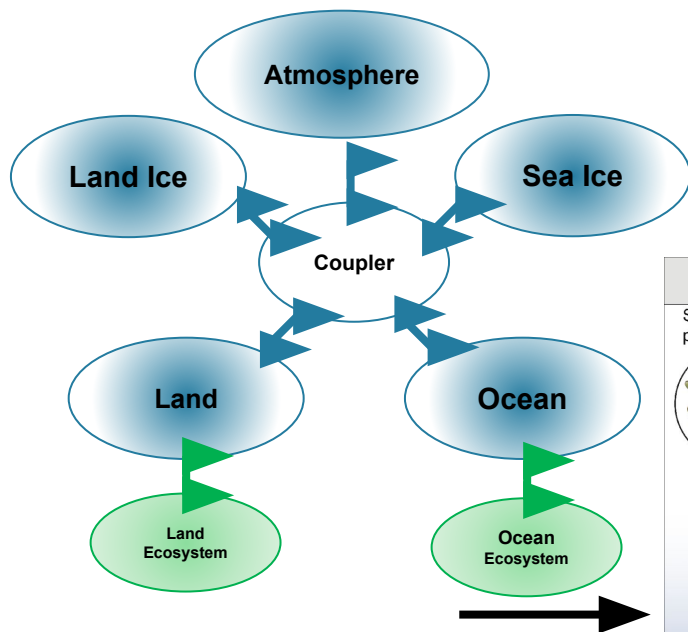


Building to consensus for the Ross Sea MPA



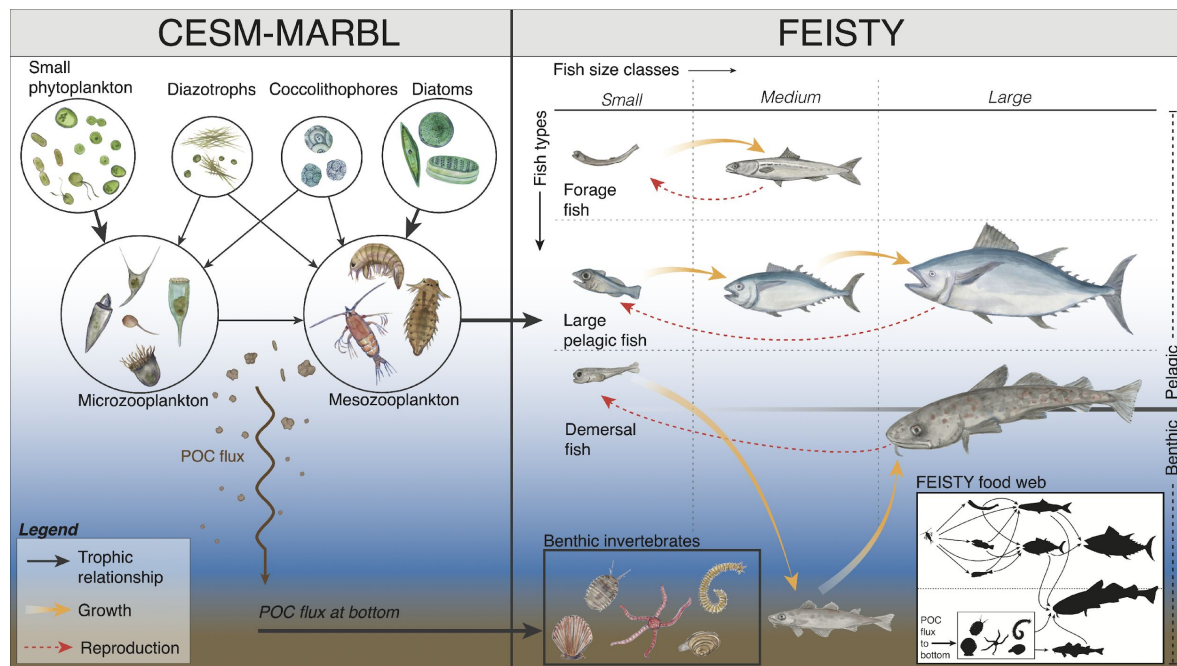
Using the CESM2 Large Ensemble to project future physical and ecosystem changes

Community Earth System Model (CESM2)



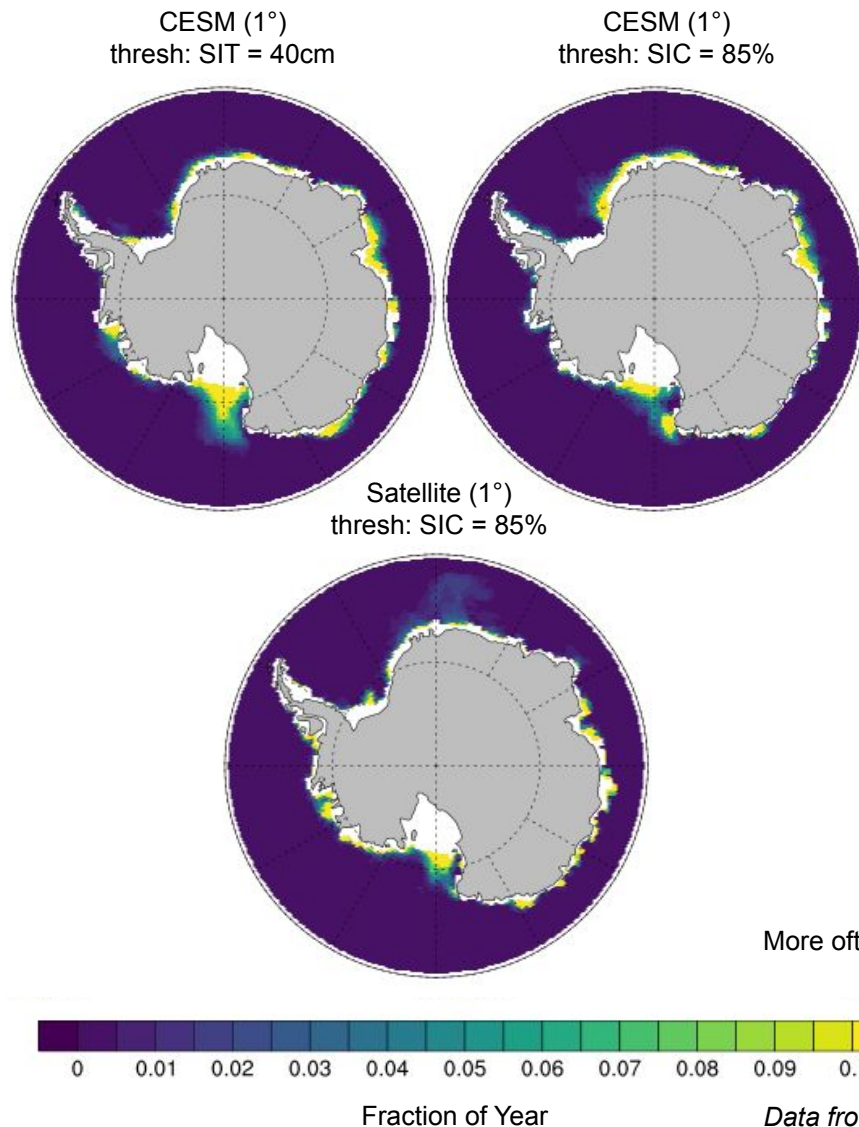
CESM2 Large Ensemble (CESM2-LE)

- 50 simulations from 1850-2100 (focusing on 1950-2100)
- Capture range of internal climate variability for a given forcing scenario



Offline Model
Uses CESM data

Identifying polynyas is not trivial!



We developed a polynya ID tool that is reproducible, verifiable, and applicable to both satellite and model gridded data using sea ice concentration (SIC) or sea ice thickness (SIT).

Scientists and End Users co-developed content for web tool



Frames from 4+ hours of interviews with Dr. Laura Landrum, Dr. Marika Holland, Dr. Stephanie Jenouvrier, and Dr. Kristen Krumhardt.

These interviews and others will provide the backbone of narrative to populate the website with explanatory media and other outreach products to expand the reach of the stories.

Upcoming Milestones

- May 2025
 - End user meeting: feedback, strategy discussion
- Summer 2025
 - OnlyOne finalizing tool
 - Complete science manuscripts
 - 2 in review, 4 in prep
 - CCAMLR Working Group on Ecosystem Monitoring and Management Meeting
 - 2 project attendees, 1 white paper
- September 2025
 - Project officially ends
- October 2025
 - Annual CCAMLR meeting and tool launch
 - 2 project attendees, 1 white paper



Photo: John Weller