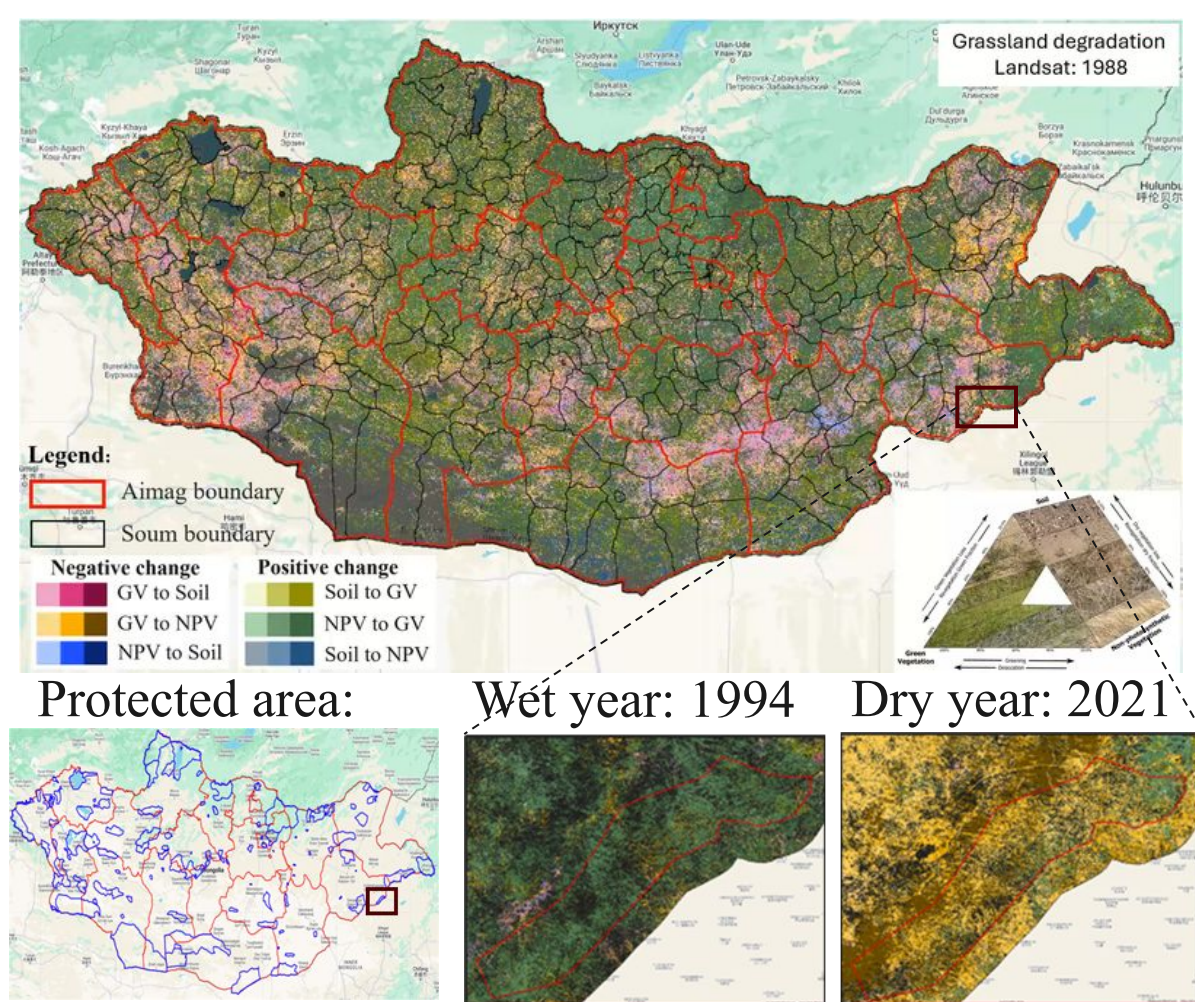
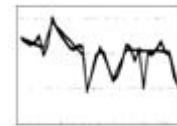


Grassland degradation patterns and causes, and the effectiveness of protected areas in Mongolia

E. Nasanbat^{1,*}, K. E. Lewińska^{1,2}, A. Anand¹, M. Nyamtseren³, O. Lkhamjav^{3,4}, A. Dorjsuren³, V. C. Radeloff¹



Data: 37 years of Landsat
(1987-2023)



Key finding: Hotspot grassland
degradation during specific episodes



Overgrazing + Climate stress
(drought) + Wildfire



Protected areas: Mixed patterns
-green vegetation loss, desiccation
increase, and recovery observed