

 UCLA

UNIVERSITEIT VAN PRETORIA
UNIVERSITY OF PRETORIA
YUNIBESITHI YA PRETORIA



Jet Propulsion Laboratory
California Institute of Technology

Intrinsic Dimensionality and Spectral Diversity



Kerry Cawse-Nicholson¹, David Thompson¹, Philip Brodrick¹, K. Dana Chadwick¹, Michael Kiper¹, David Schimel¹, Charles Miller¹, Zoe Pierrat¹, Luciana Alves², Philip Townsend³, Alexey Shiklomanov⁴



Moses Cho⁵, Abel Ramoelo⁶, Philemon Tsele⁶, Nobuhle Majozi⁴, Cecilia Masemola⁴



Simon Ferrier⁶

¹ Jet Propulsion Laboratory, California Institute of Technology, USA

² University of California, Los Angeles, USA

³ University of Wisconsin, Madison, USA

⁴ NASA Goddard Space Flight Center, USA

⁵ CSIR, South Africa

⁶ University of Pretoria, South Africa

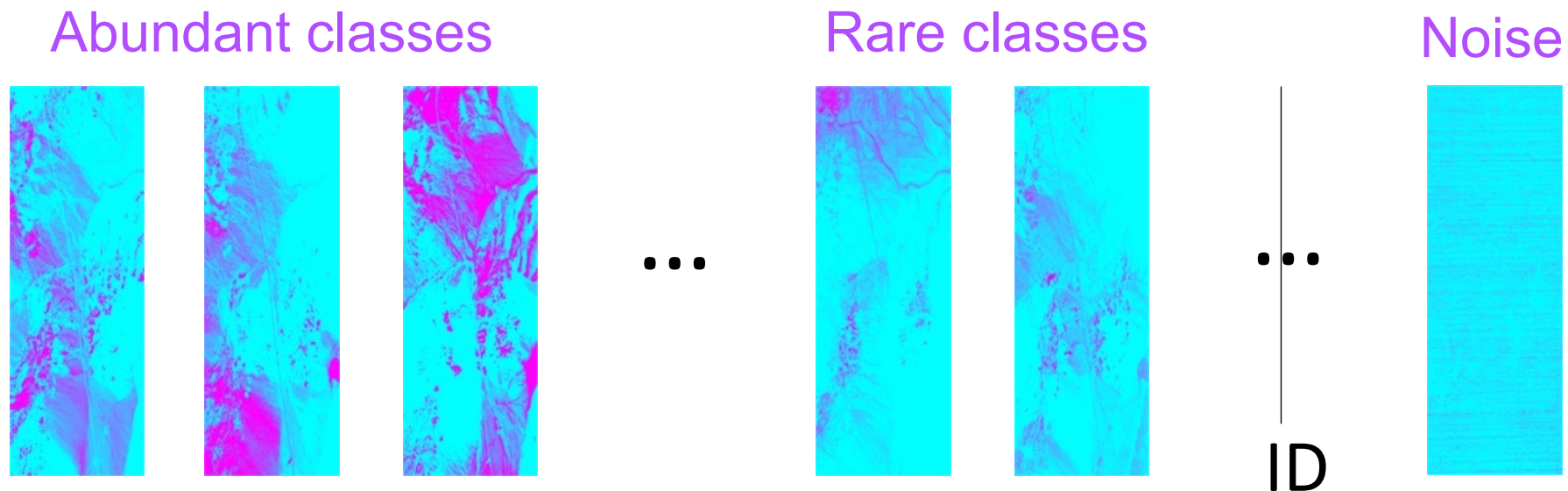
⁷ CSIRO, Australia

Intrinsic Dimensionality

Defined as the dimension of the signal subspace

The number of unique pieces of information (principal components)

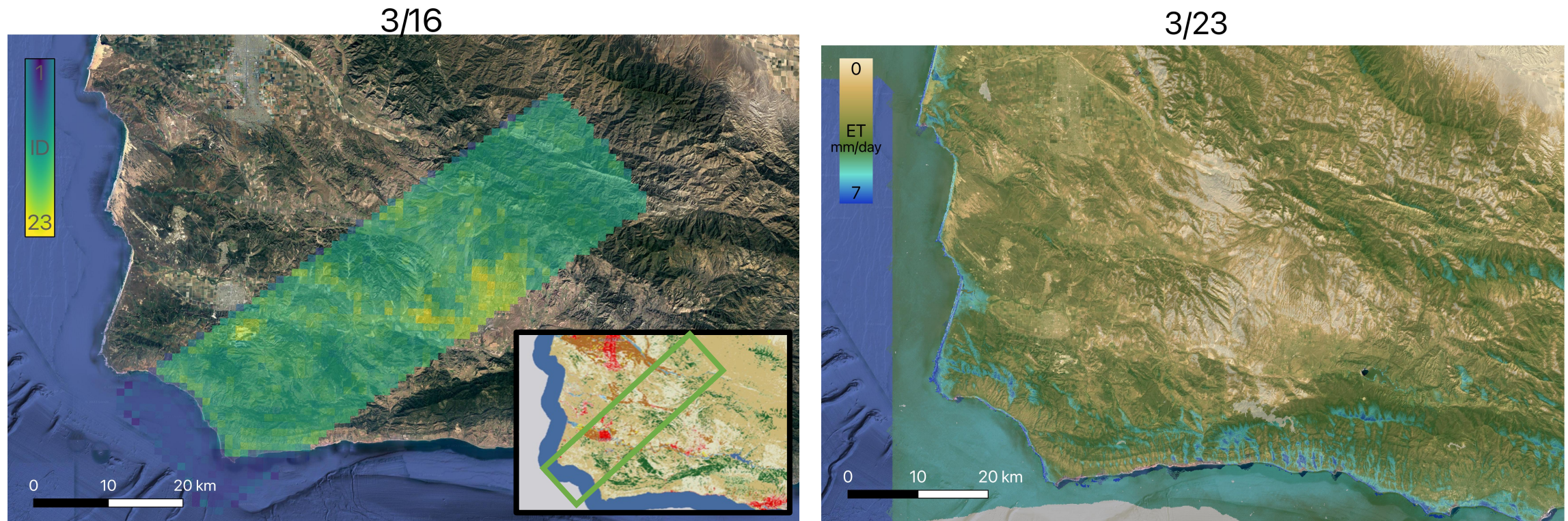
Hypothesis that ID can be used as a metric for biodiversity.



The mathematical concept of intrinsic dimensionality provides a metric for spectral diversity that does not inherently require training data, making its development and validation important for the future of global biodiversity mapping.

SHIFT spatial ID vs. ET

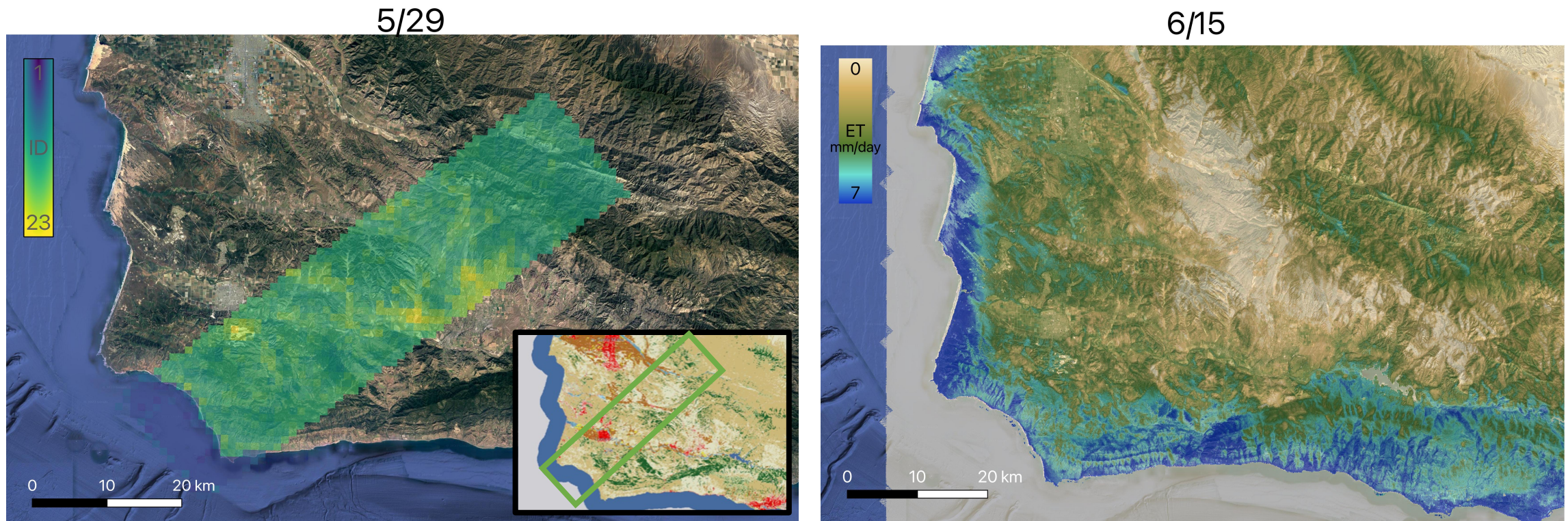
Intrinsic Dimensionality (ID) for 1 km blocks, vs. the nearest ECOSTRESS DisALEXI Evapotranspiration (ET) over the SHIFT domain



ID more sensitive to “number of *things* in a cell” than seasonal effects

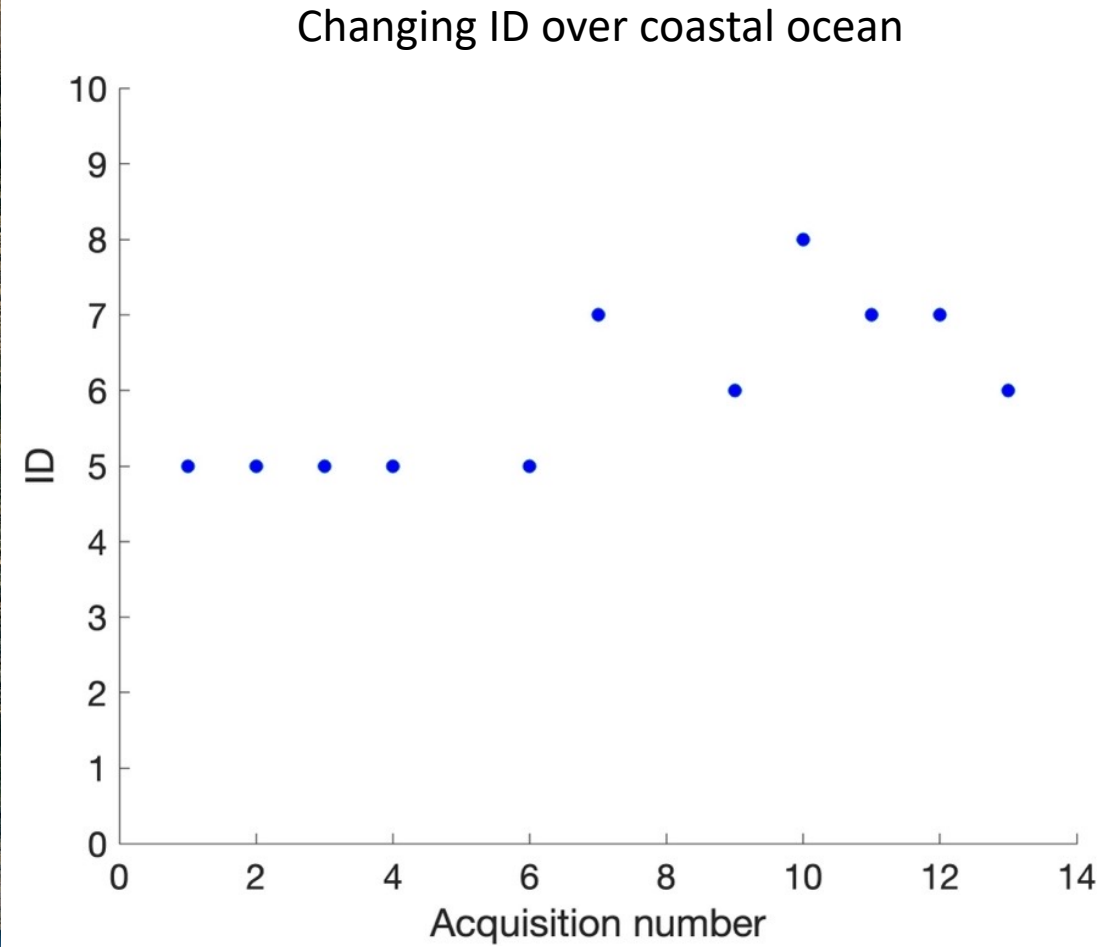
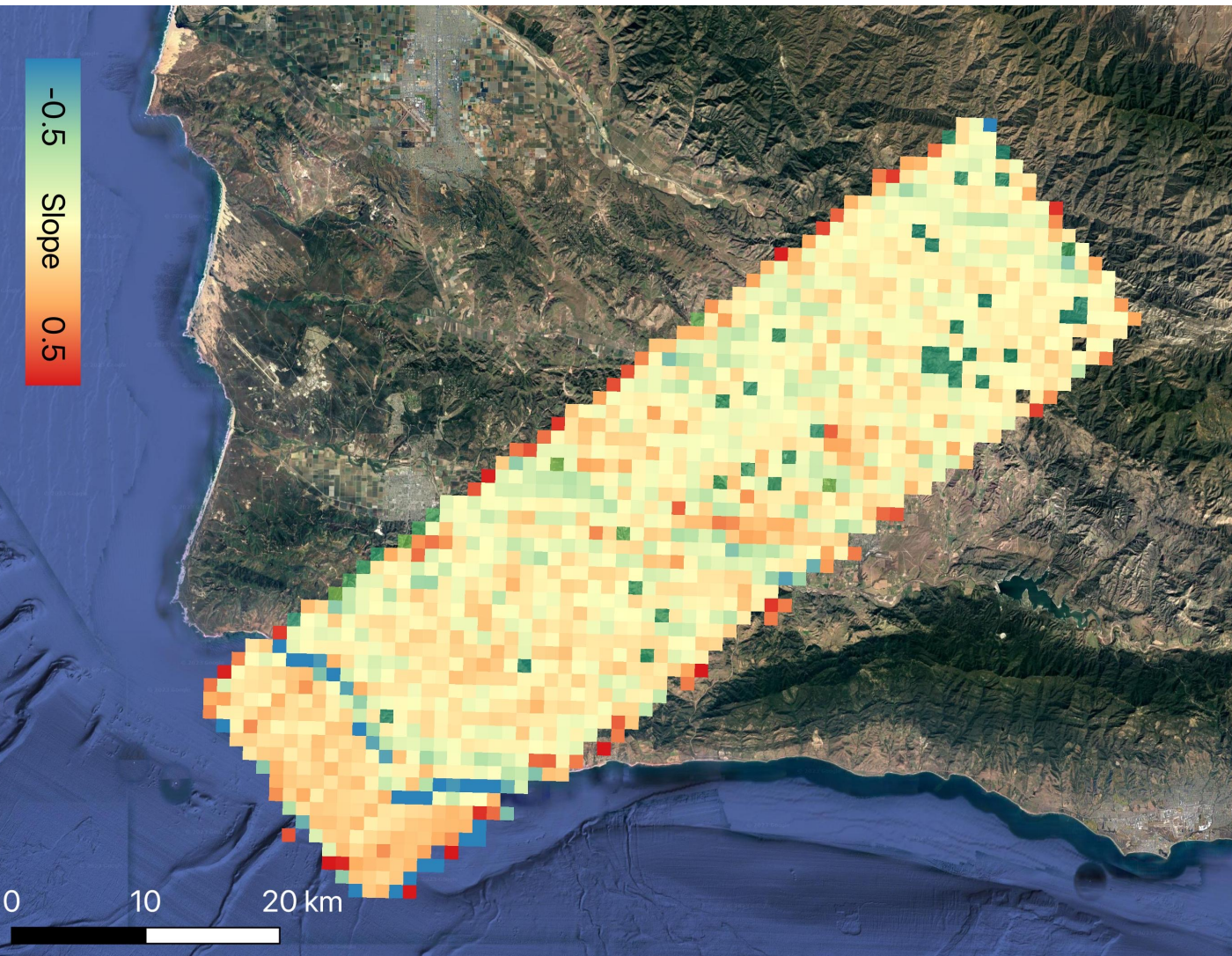
SHIFT spatial ID vs. ET

Intrinsic Dimensionality (ID) for 1 km blocks, vs. the nearest ECOSTRESS DisALEXI Evapotranspiration (ET) over the SHIFT domain

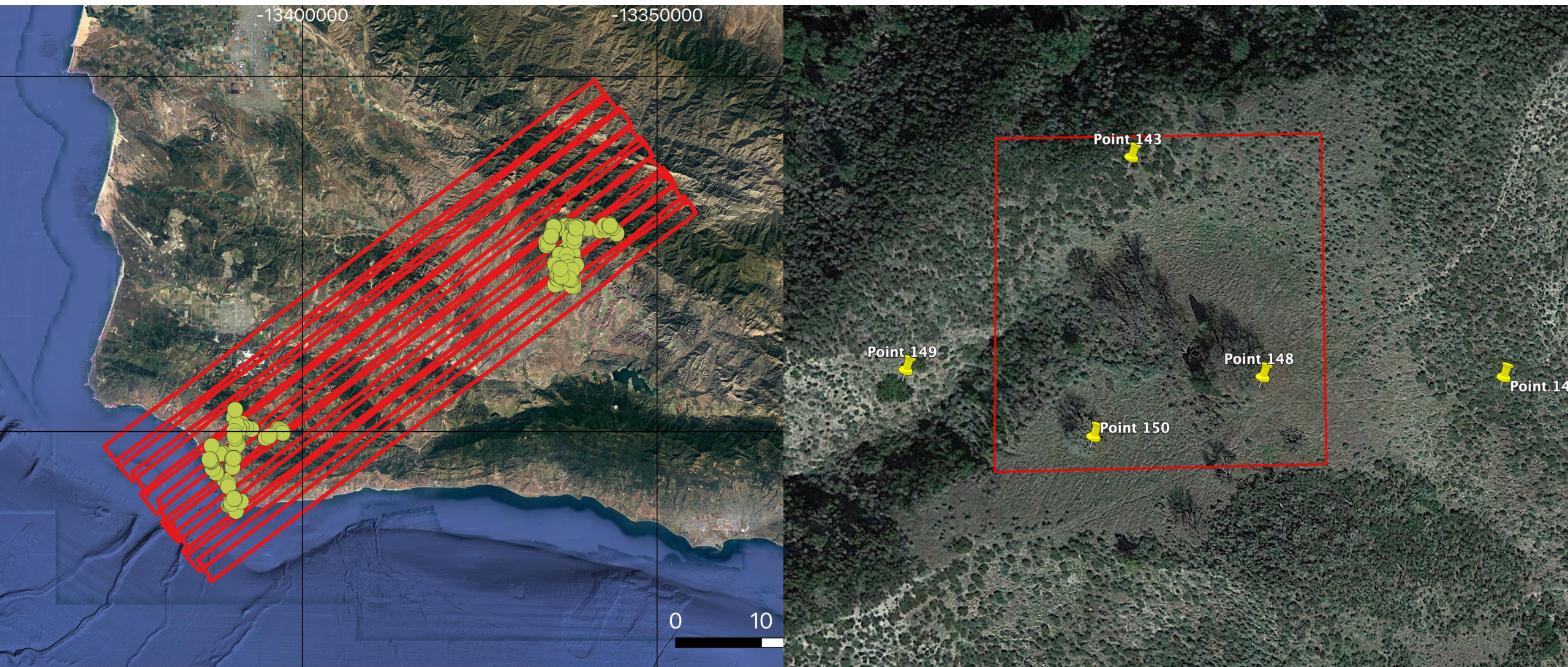


ID more sensitive to “number of *things* in a cell” than seasonal effects

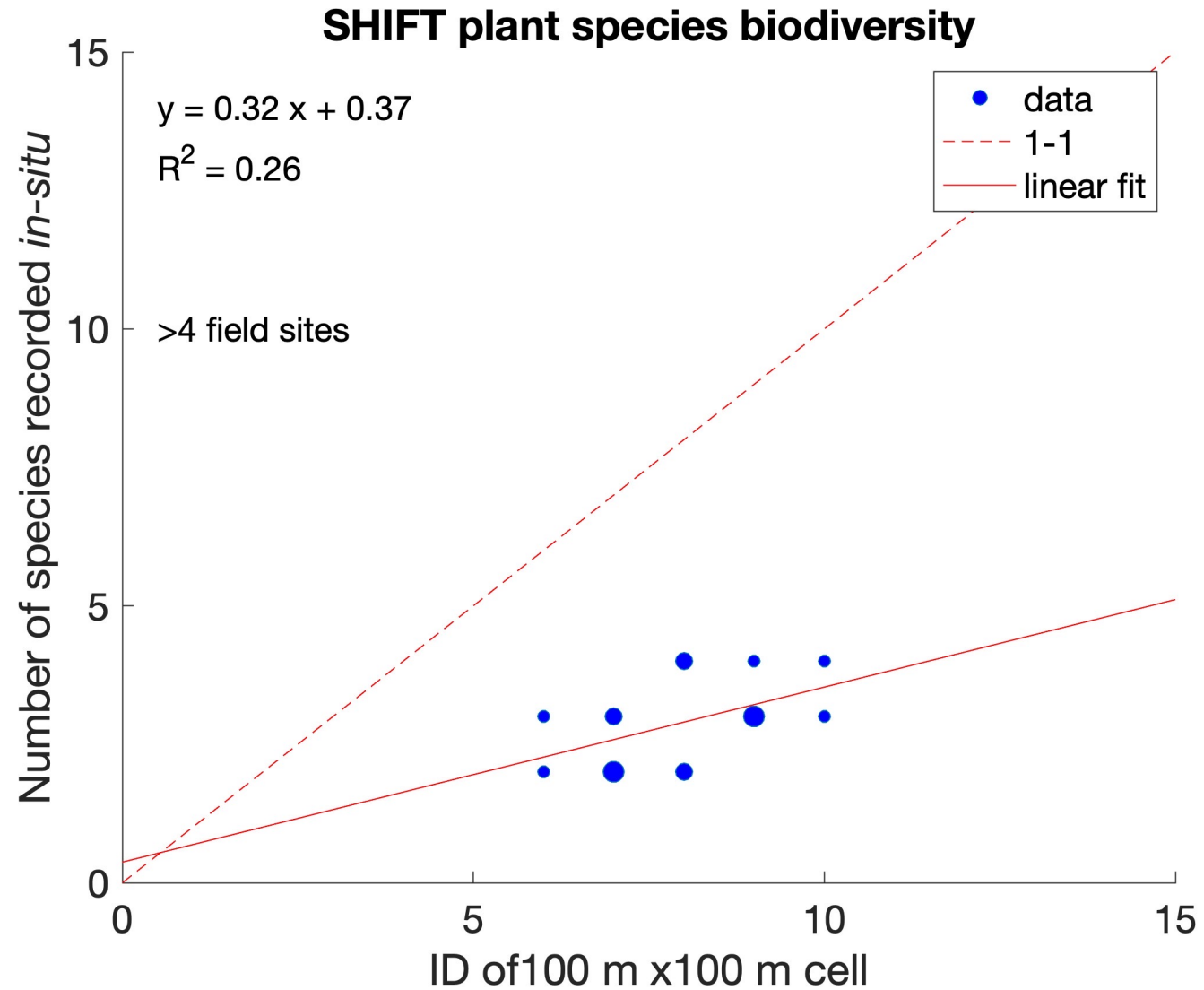
SHIFT spatial ID is relatively stationary over Feb-May



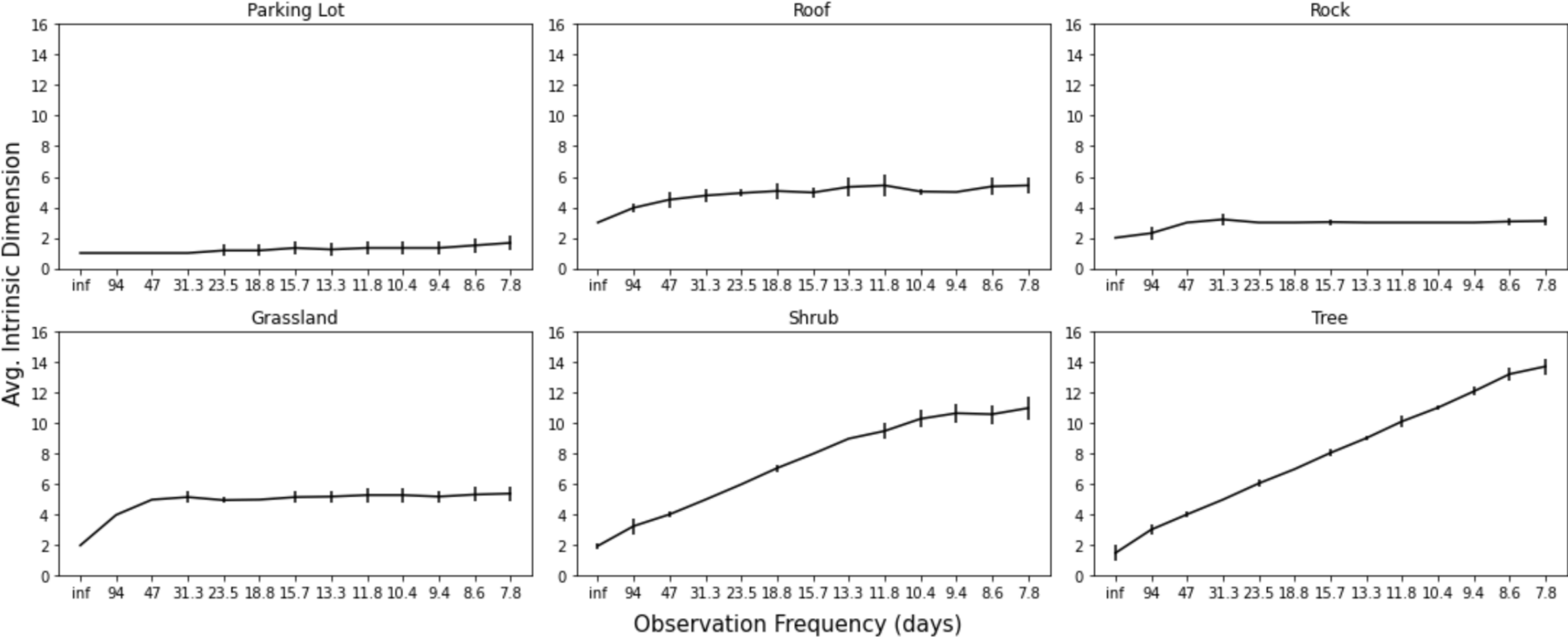
SHIFT spatial ID validation against small field sites



SHIFT ID validation is encouraging



Temporal ID: information gain when combining weekly observations





Bredasdorp

Baardskeerdersbos

Elim

Priority 1
Priority 2

Pearly Beach

Wolvengat

Agulhas National Park

Die Dam

Aasfontein

BioSCape Fieldwork 2023

Struis Bay

Hotagterklip

L'Agulhas



Fieldwork during the BioSCape Campaign 2023

Next steps



APPLY SHIFT
METHODOLOGY TO
BIOSCAPE DATA



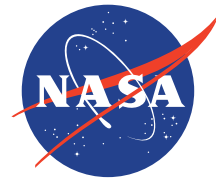
FIELD
VALIDATION



IMPLEMENT
BETA DIVERSITY
METHODOLOGY



STUDY DRIVERS
OF DIVERSITY



Jet Propulsion Laboratory
California Institute of Technology

jpl.nasa.gov