



Great Lakes Indian Fish & Wildlife Commission (GLIFWC)



Harvest Regulations Camping Registration Treaty Rights GIS Maps Educational Materials Reports

Boozhoo

The Great Lakes Indian Fish & Wildlife Commission is commonly known by its acronym, GLIFWC. Formed in 1984, GLIFWC represents **eleven Ojibwe tribes** in Minnesota, Wisconsin, and Michigan who reserved hunting, fishing and gathering rights in the 1836, 1837, 1842, and 1854 **Treaties** with the United States government.

GLIFWC provides natural resource management expertise, conservation enforcement, legal and policy analysis, and public information services in support of the exercise of treaty rights during well-regulated, off-reservation seasons throughout the treaty **ceded territories**.

GLIFWC is guided by its **Board of Commissioners** along with two standing committees, the **Voigt Intertribal Task Force** and the **Great Lakes Fisheries Committee**, which advise the Board on policy.



Parching wild rice

GLIFWC News & Upcoming Events

Current News & Events

Wisconsin officials double down on disastrous wolf policy

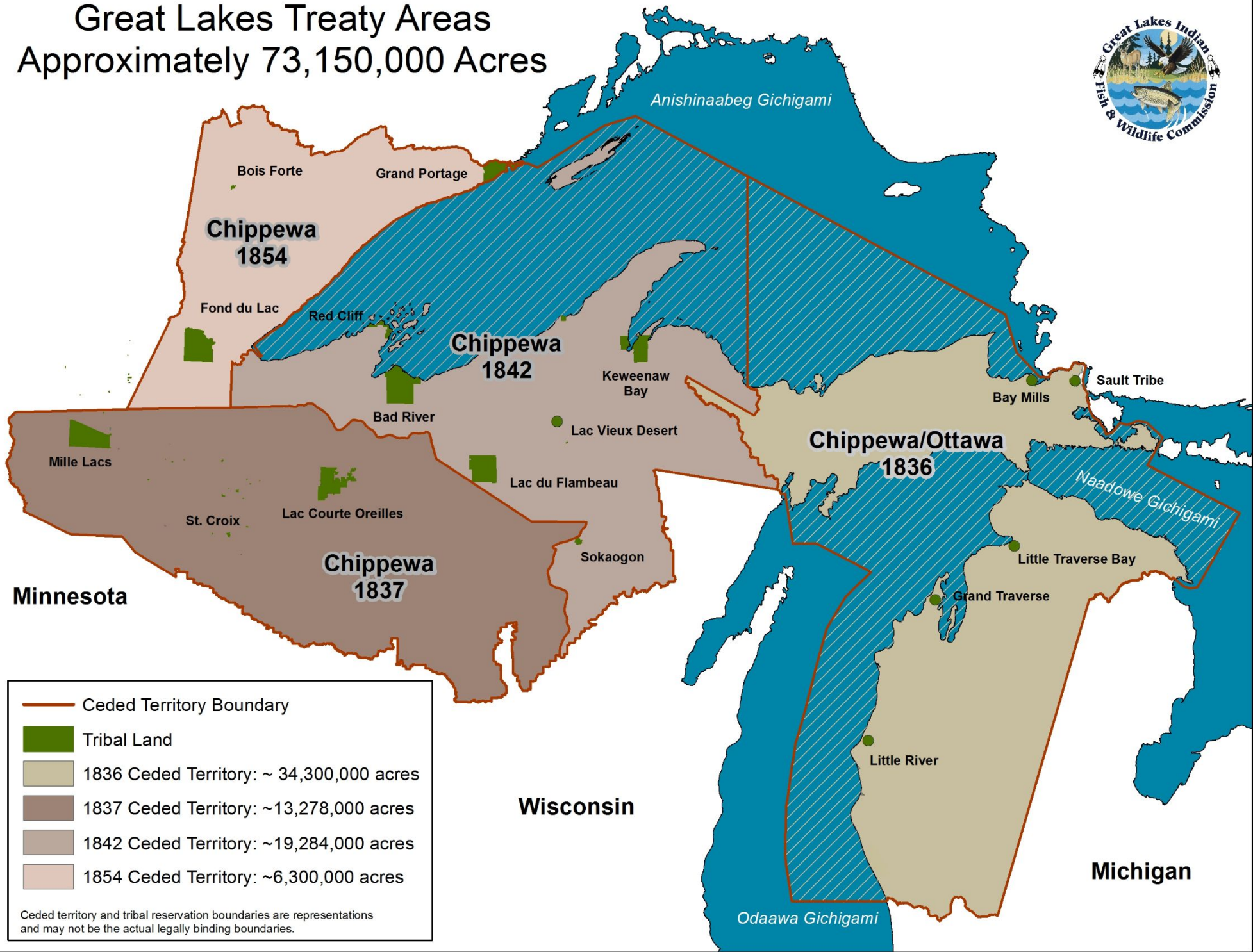
GLIFWC's Focus Areas

GLIFWC is actively involved in a broad spectrum of resource related activities aimed at protecting and enhancing the natural resources and habitat in the treaty-ceded territories while also infusing an Ojibwe perspective into its work.

<http://glifwc.org/>

Great Lakes Treaty Areas

Approximately 73,150,000 Acres



— Ceded Territory Boundary

■ Tribal Land

■ 1836 Ceded Territory: ~ 34,300,000 acres

■ 1837 Ceded Territory: ~13,278,000 acres

■ 1842 Ceded Territory: ~19,284,000 acres

■ 1854 Ceded Territory: ~6,300,000 acres

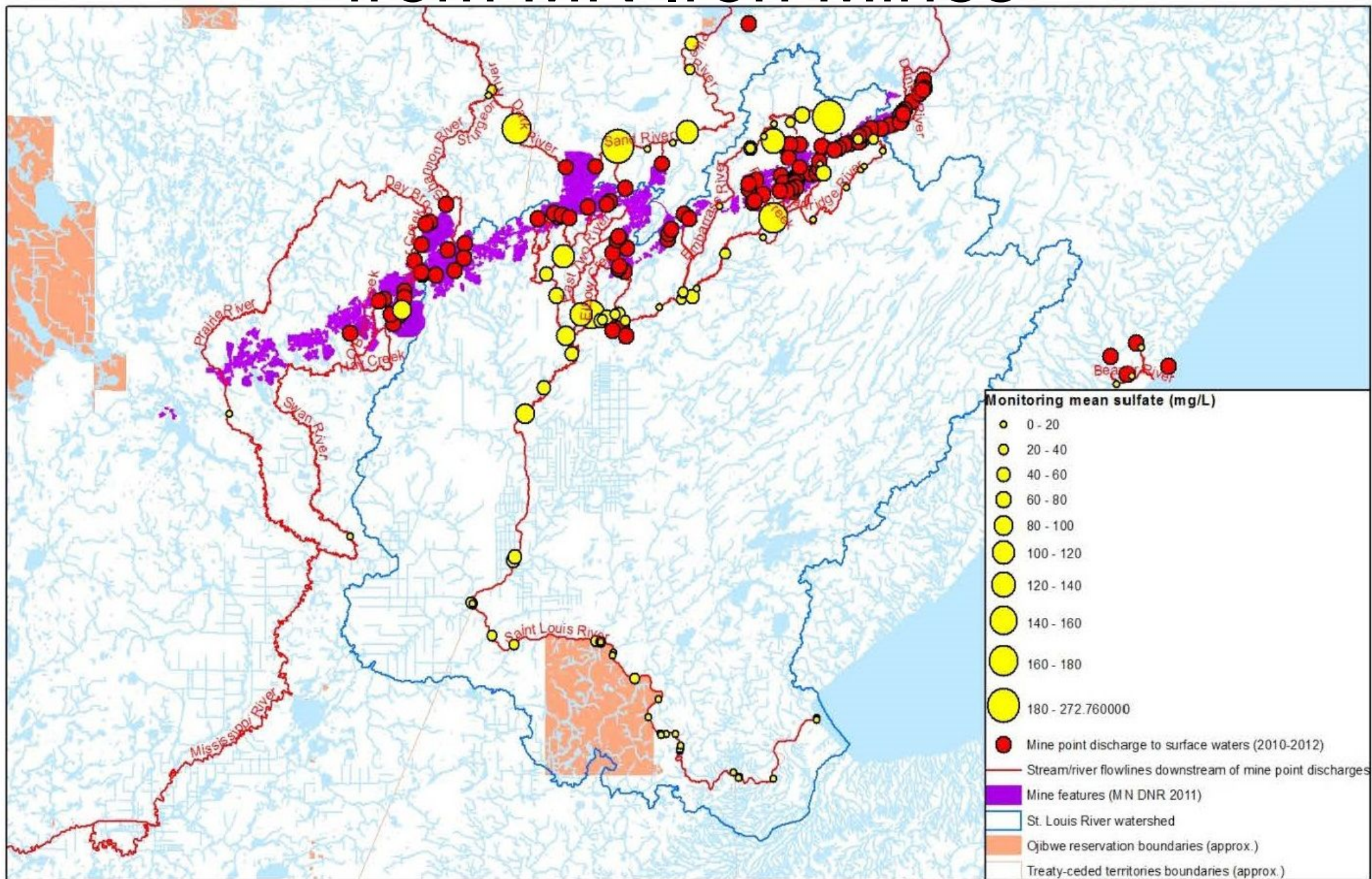
Ceded territory and tribal reservation boundaries are representations and may not be the actual legally binding boundaries.







Cumulative Impacts: e.g. Sulfate from MN Iron Mines









EXPLORE

Products

All (Global)

CCI Biomass 2020

GEDI Gridded Biomass 2020

ICESat-2 Boreal 2020

NCEO Africa 2017

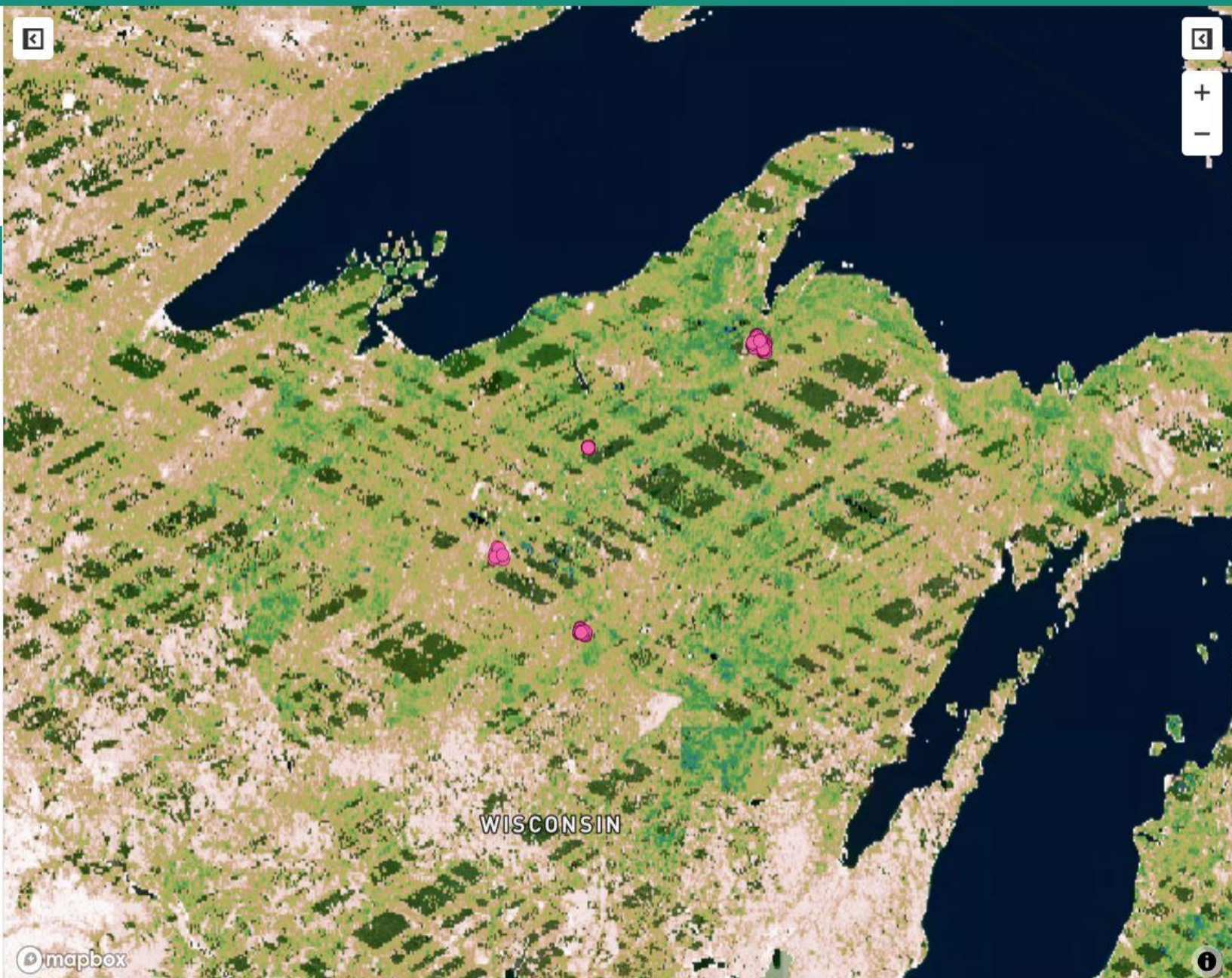
GEDI Gridded Biomass...



GEDI Gridded Biomass...



GEDI Cal/Val Field Data



Scripts Docs Assets

Filter scripts...

NEW



Owner (1)

users/PolyMeetings/miles-rice1

Datasets

Height01

NAIP01

UntitledFile

Writer

No accessible repositories. Click Refresh to check again.

Reader (1)

users/sat-io/awesome-gee-catalog-ex...

Height01 *

Get Link

Save

Run

Reset

Apps



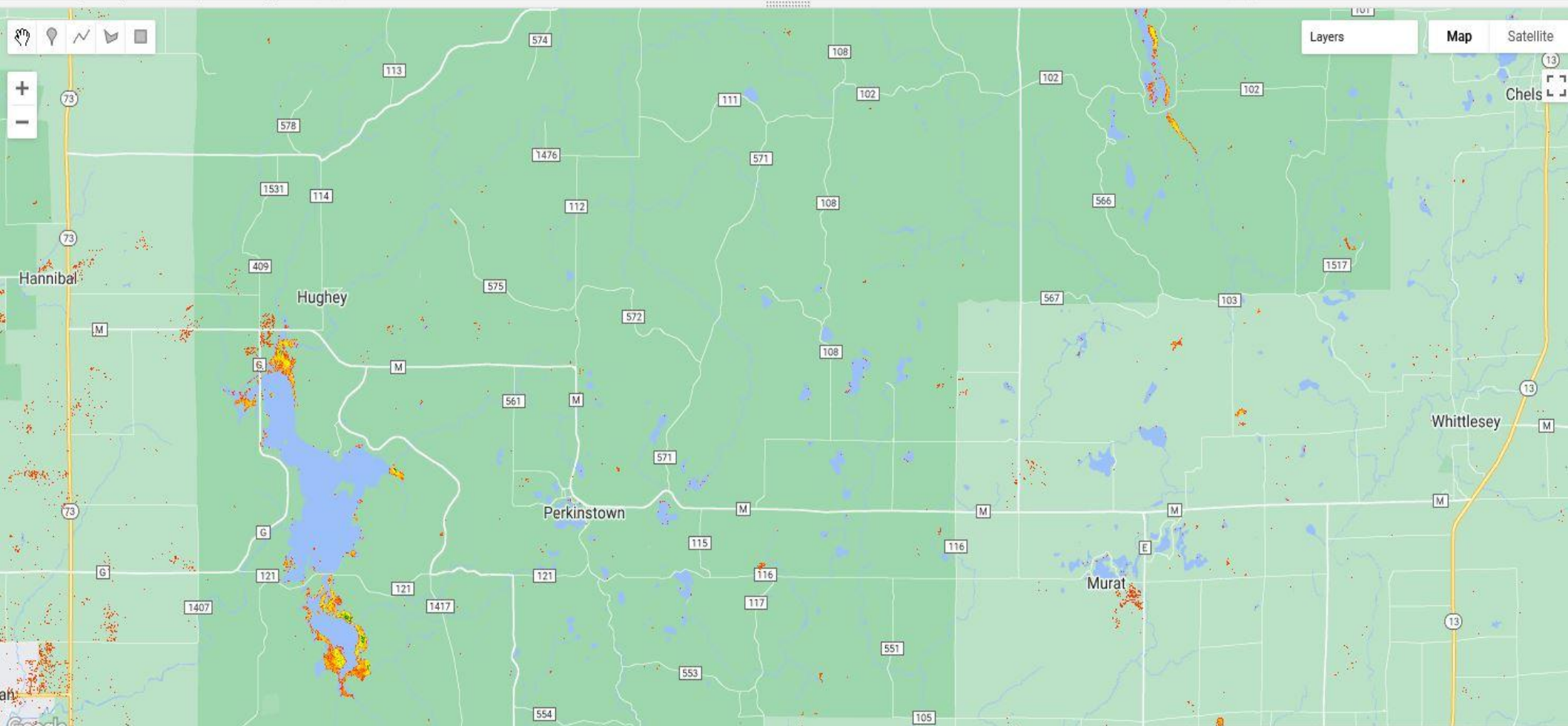
Inspector

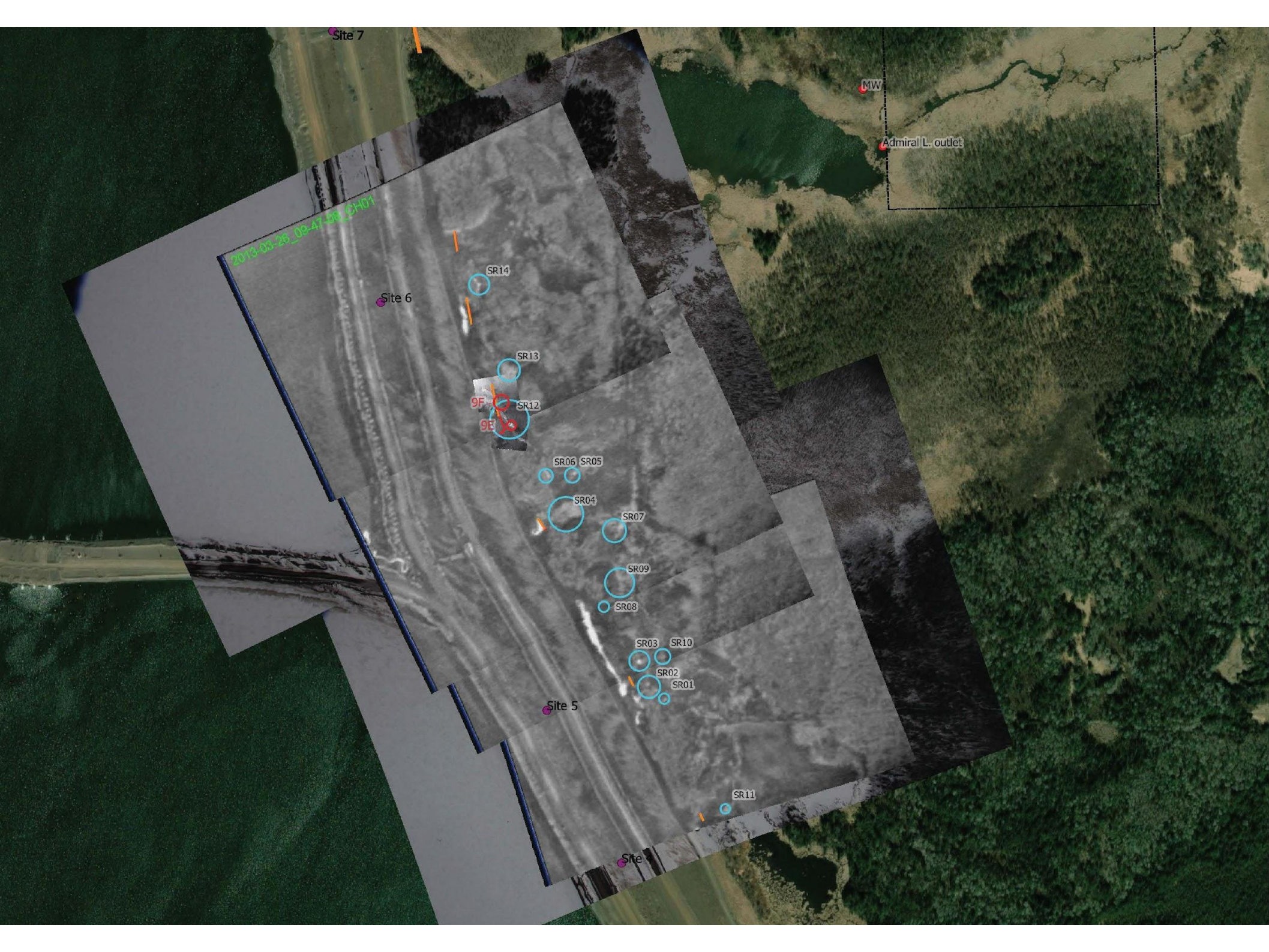
Console

Tasks

```
1 // Map Parameters
2 var year = 2020;
3 var thresholdLower = 2;
4 var thresholdUpper = 19;
5 var mask = 3;
6 var period1Start = year + '-04-01';
7 var period1End = year + '-06-30';
8 var period2Start = year + '-07-01';
9 var period2End = year + '-09-30';
10
11
12 // Define common styles
13 var studyStyle = {color: 'purple', fillColor: '00000000', width: 1};
14
15 // Load Sentinel-1 imagery for the year
16 <
```

Click on the map to inspect the layers.





Site 7

MW

Admiral L. outlet

2013-03-26_09:47:08_CH01

Site 6

SR14

SR13

9F

9E

SR12

SR06 SR05

SR04

SR07

SR09

SR08

SR03 SR10

SR02

SR01

Site 5

SR11

Site 4

