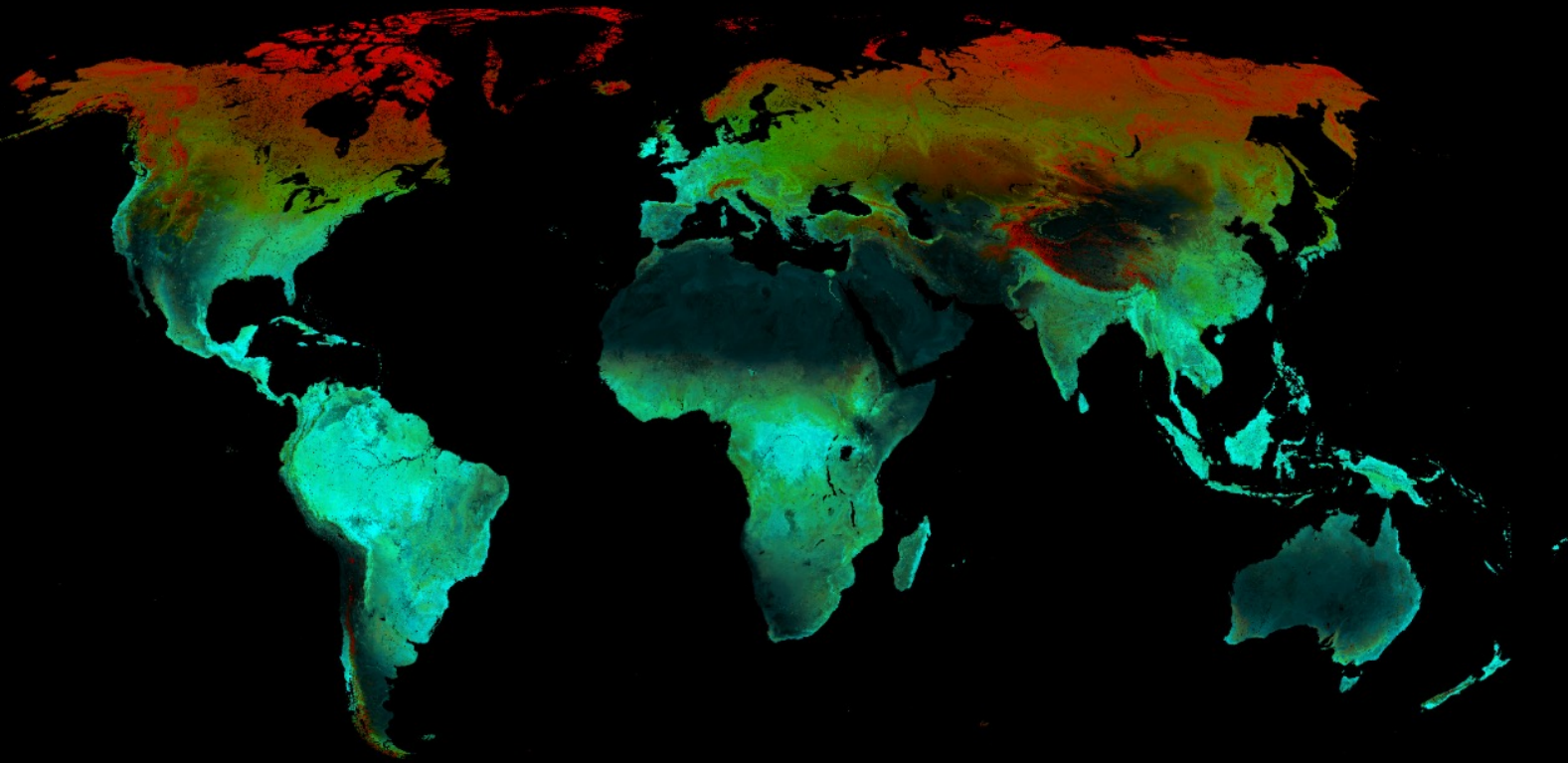


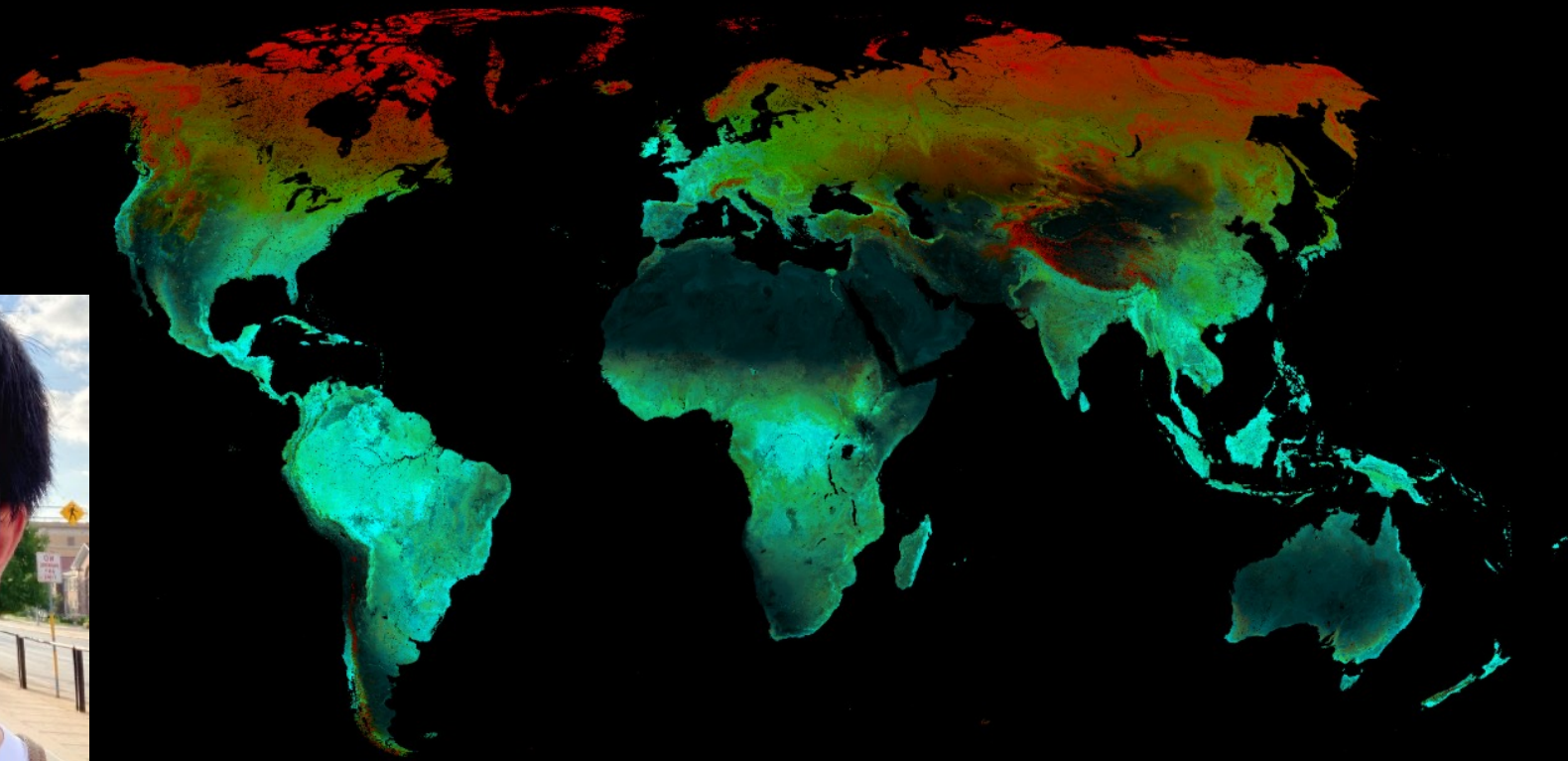
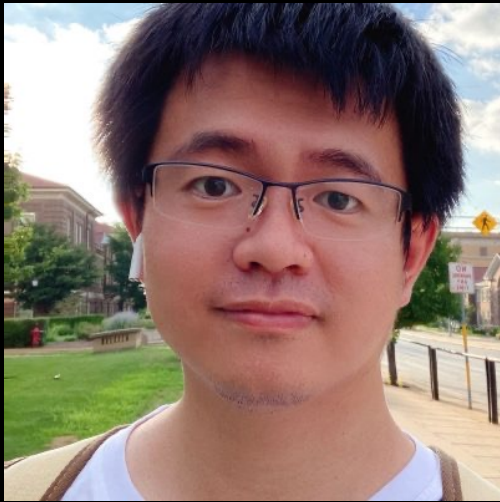
The Dynamic Habitat Indices from Terra, Aqua, Suomi NPP and JPSS data for biodiversity science and conservation



Volker C. Radeloff, Duanyang Liu, University of Wisconsin-Madison
E. Silveira, E. Razenkova, A. M. Pidgeon, N. Coops, D. Gudex-Cross, M. Hobi, and A. Ives



The Dynamic Habitat Indices from Terra, Aqua, Suomi NPP and JPSS data for biodiversity science and conservation



Volker C. Radeloff, Duanyang Liu, University of Wisconsin-Madison

E. Silveira, E. Razenkova, A. M. Pidgeon, N. Coops, D. Gudex-Cross, M. Hobi, and A. Ives

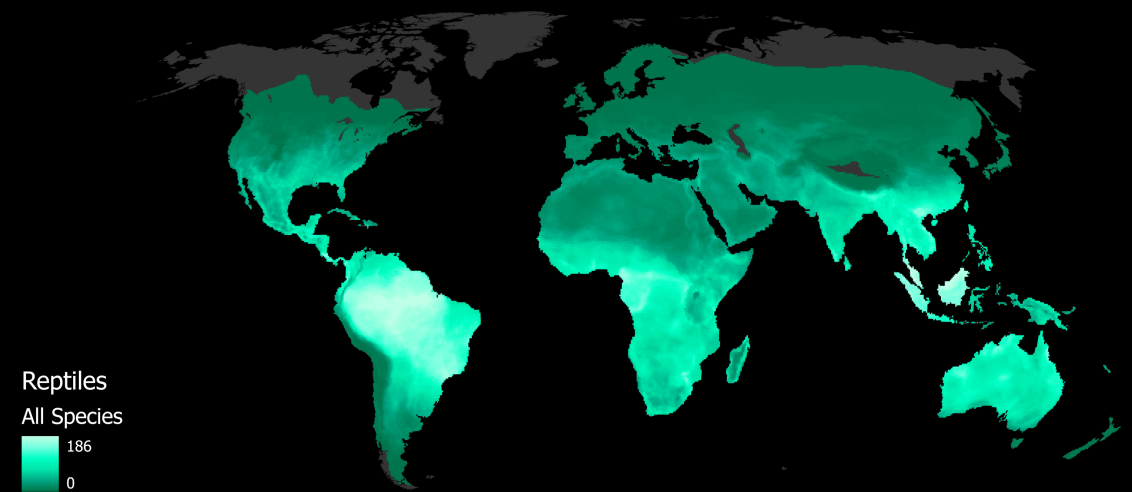
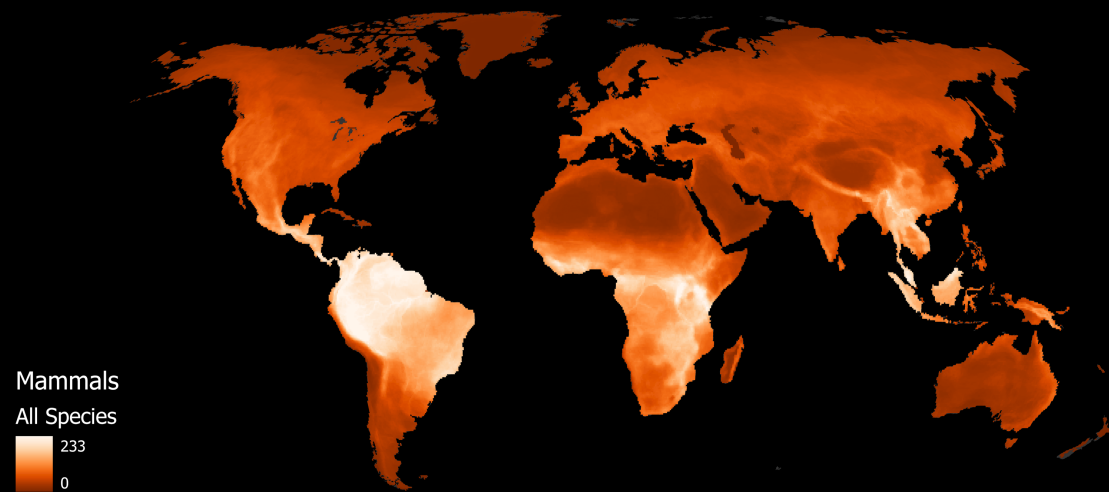
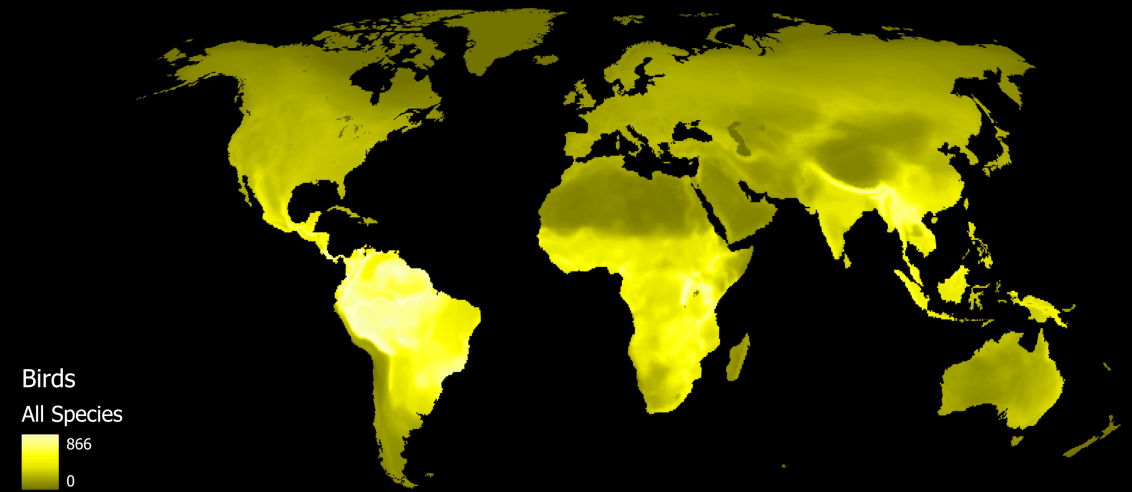
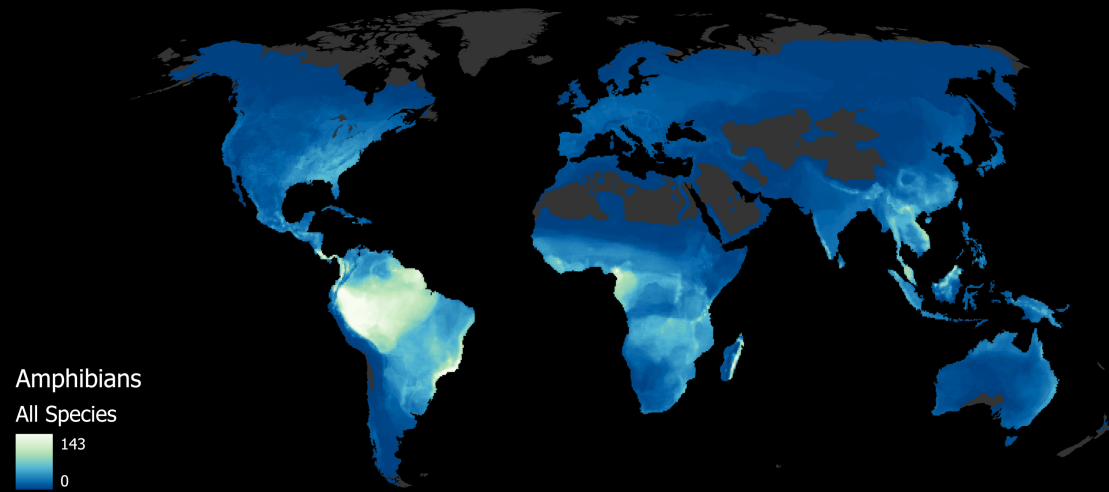


Outline

1. Introducing the DHIs
2. Product status updates
3. Uncertainty estimation
4. DHIs versus species richness and human settlements



Introduction



Cox, Young, Bowles, et al. *Nature* (2022)

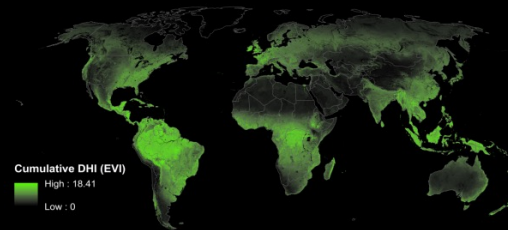


Introduction

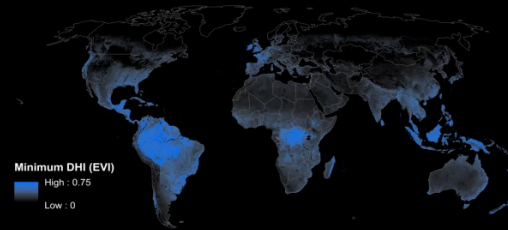
Ecology

DHIs

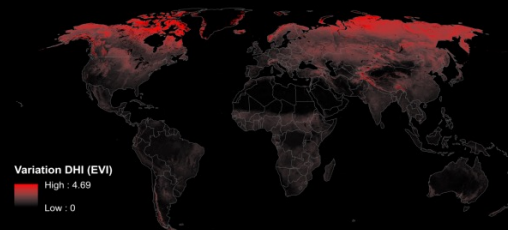
Available energy hypothesis



Environmental stress hypothesis



Environmental variability hypothesis

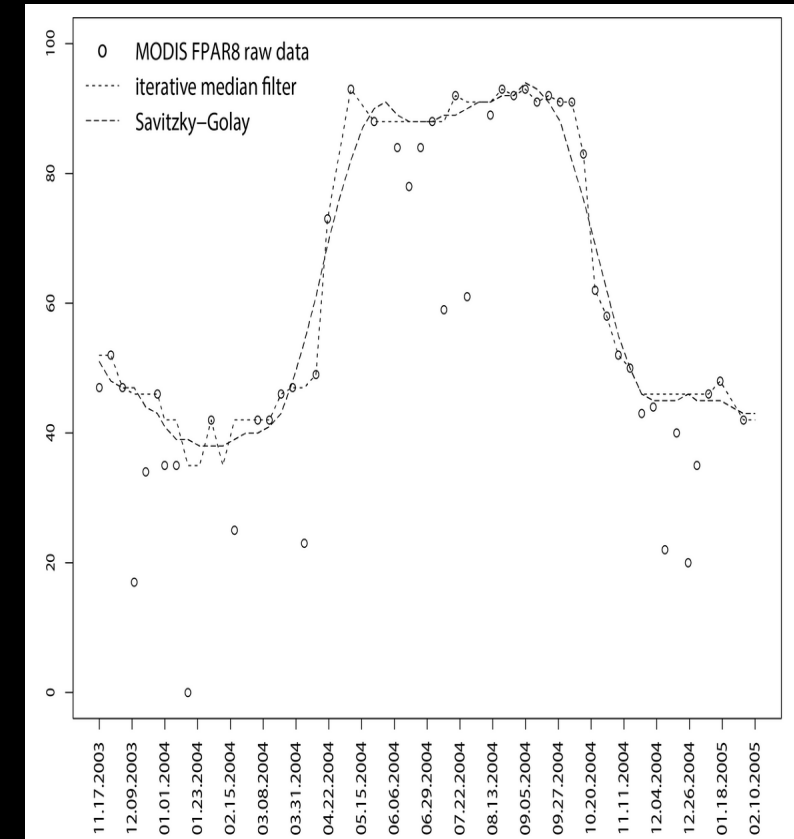
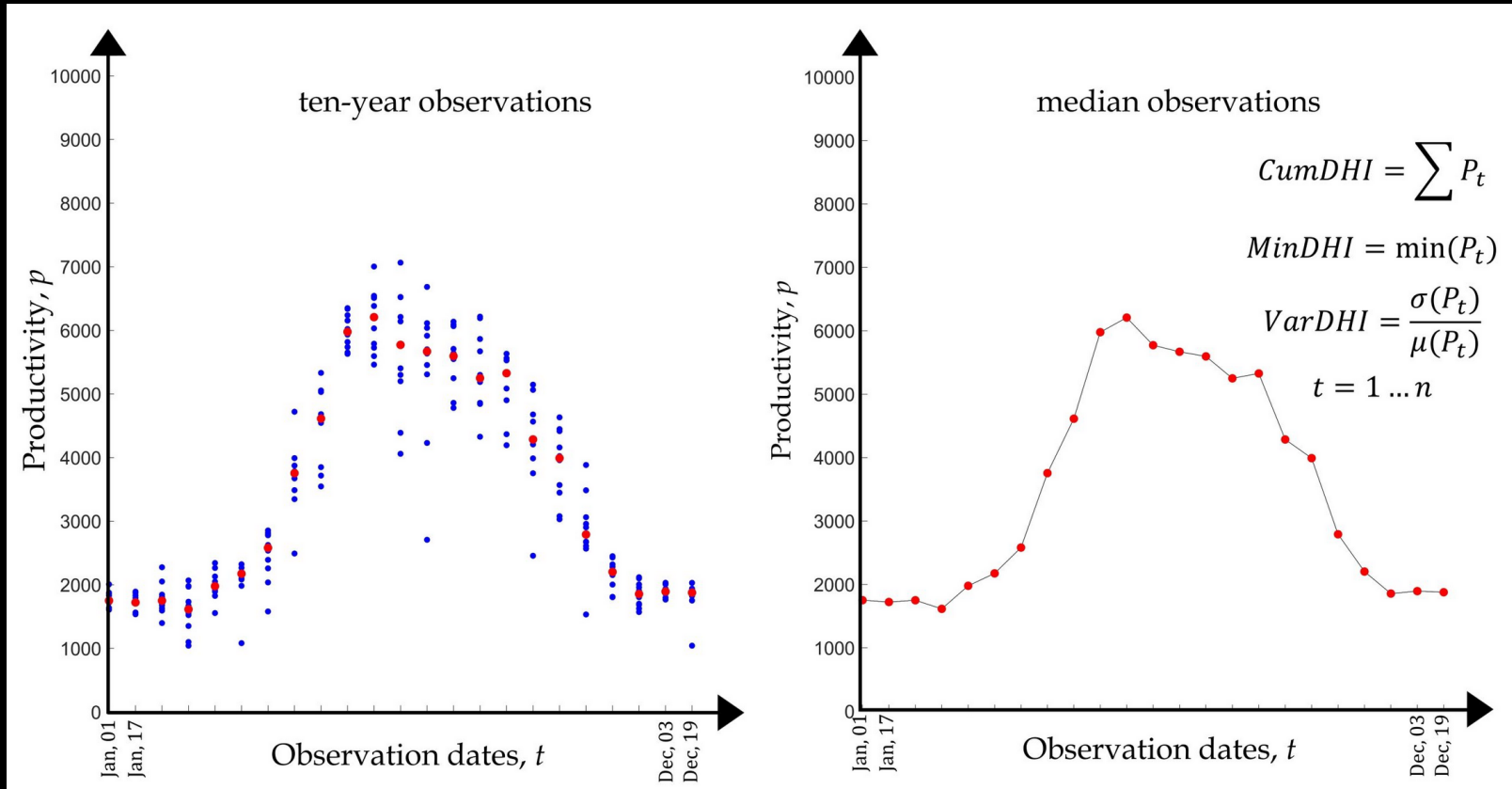


Radeloff, et al., 2019, RSE



Introduction

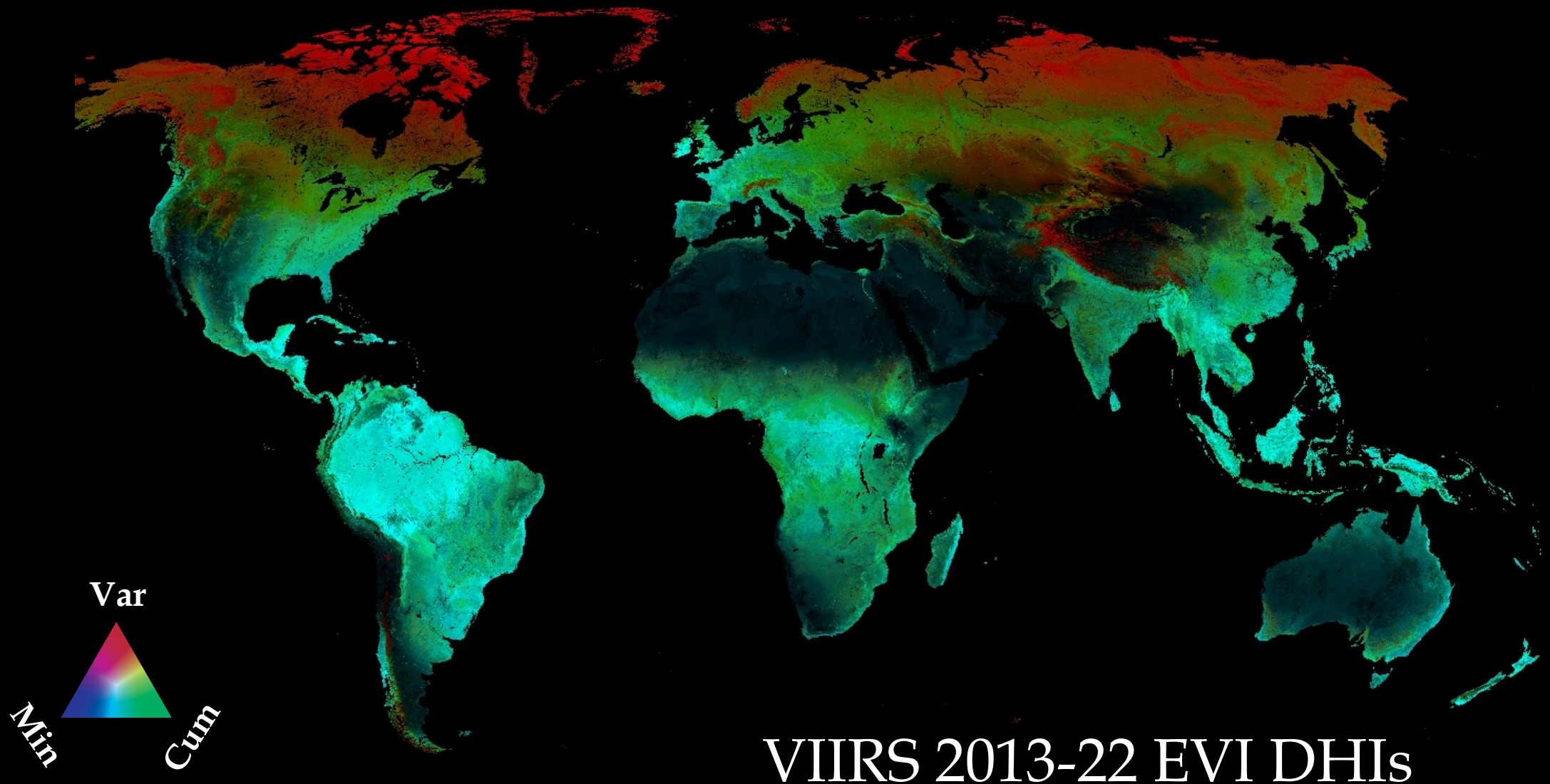
Composite & annual DHIs from MODIS and VIIRS



Radeloff, et al., 2019, RSE



Introduction



VIIRS 2013-22 EVI DHI_s



Introduction

Ecology

DHIs

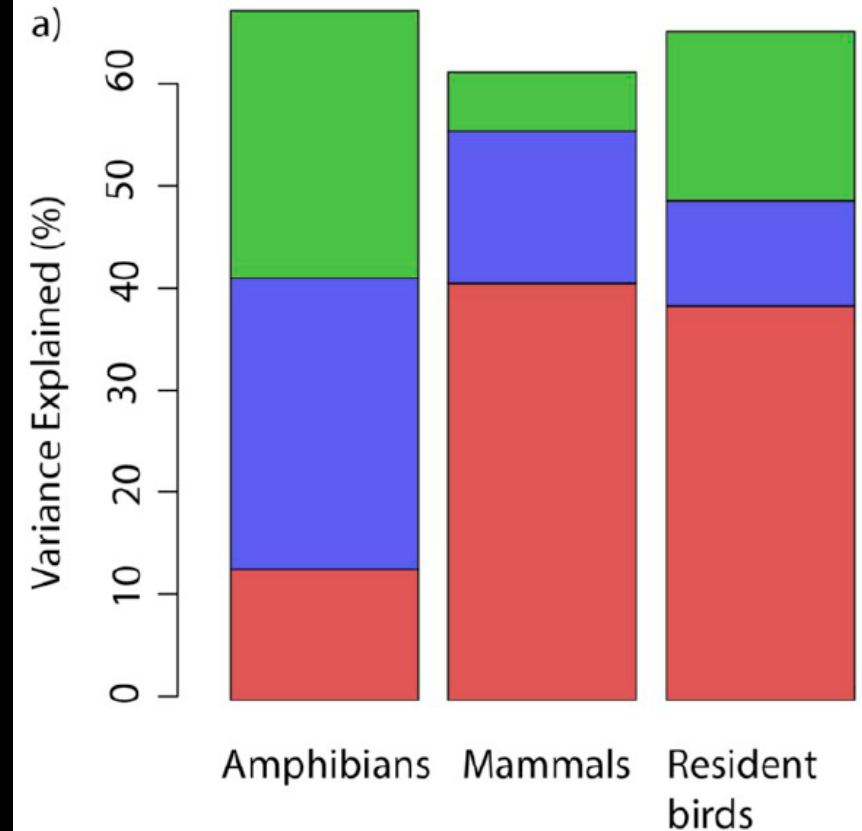
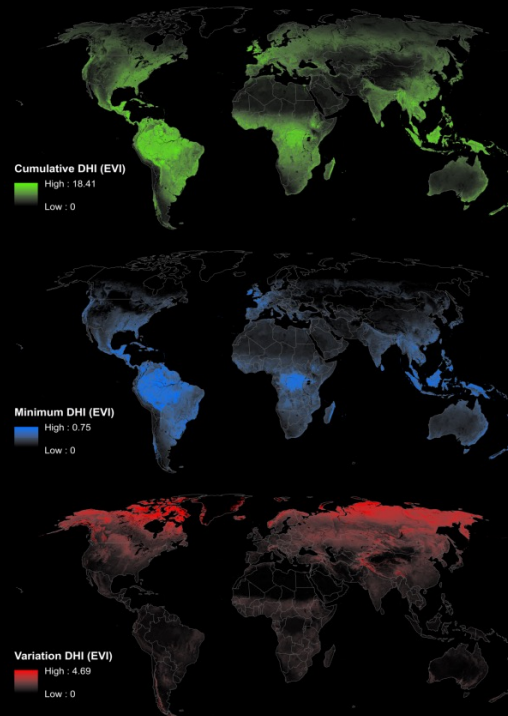
Available energy hypothesis



Environmental stress hypothesis



Environmental variability hypothesis



Radeloff, et al., 2019, RSE



Outline

1. Introducing the DHIs
2. Product status updates
3. Uncertainty estimation
4. DHIs versus species richness and human settlements



DHIs Product Status

Composite & annual DHIs from MODIS and VIIRS

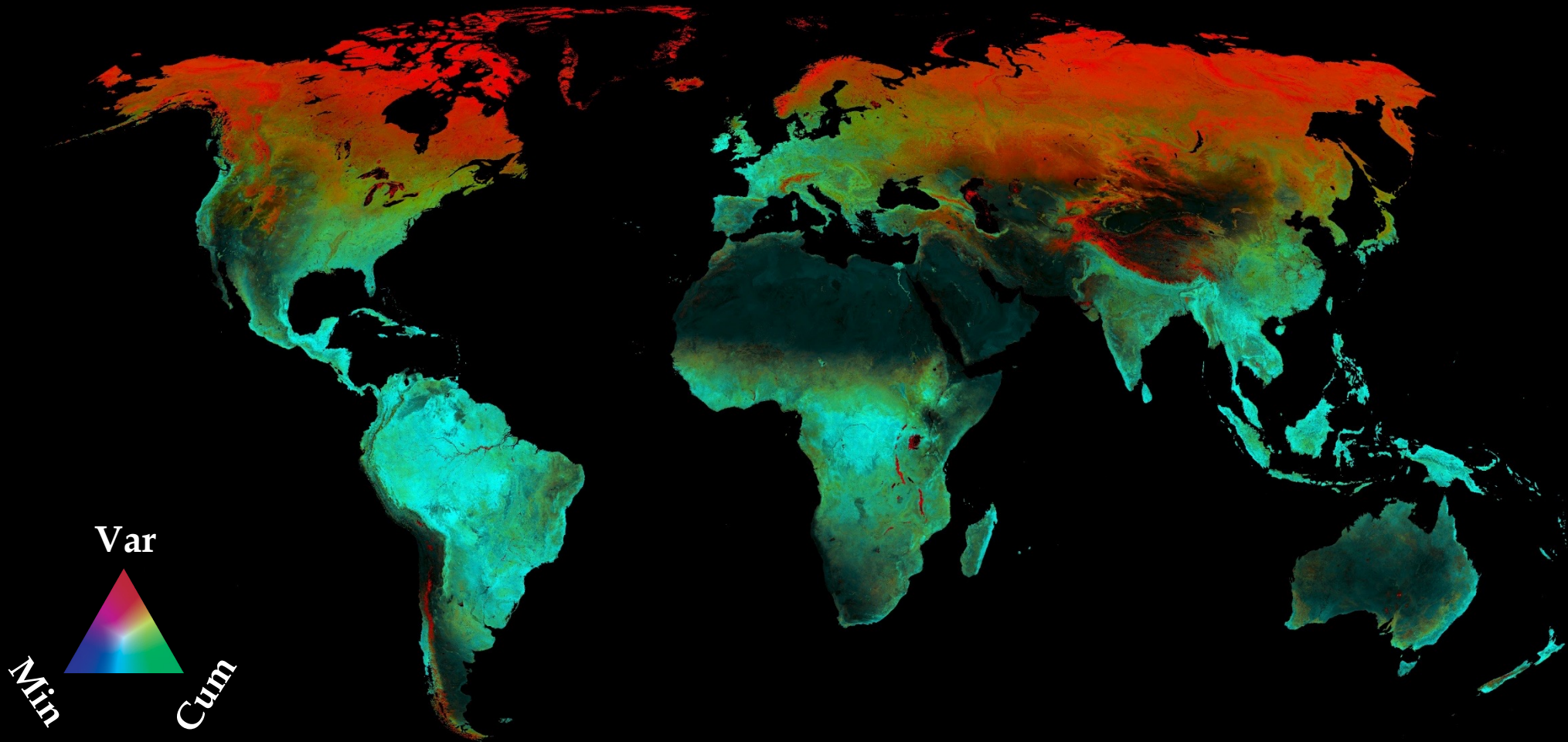
	Vegetation index	Resolutions	Time span
MODIS Collection 6.1 Aqua & MODIS Collection 6.1 Terra	NDVI	250/500/100m, 16-day	2003-2017
			2018-2022
			2013-2022
			2003-2022
	EVI	250/500/100m, 16-day	2003-2017
			2018-2022
			2013-2022
			2003-2022
	LAI	500m, 8-day	2003-2017
			2018-2022
			2013-2022
			2003-2022
	fPAR	500m, 8-day	2003-2017
			2018-2022
			2013-2022
			2003-2022
GPP	500m, 8-day	2003-2017	
		2018-2022	
		2013-2022	
		2003-2022	

	Vegetation index	Resolutions	Time span
VIIRS	NDVI	500m, 16-day	2018-2022
			2013-2022
	EVI	500m, 16-day	2018-2022
			2013-2022
	EVI2	500m, 16-day	2018-2022
			2013-2022
LAI	500m, 16-day	2018-2022	
		2013-2022	
fPAR	500m, 16-day	2018-2022	
		2013-2022	



DHIs Product Status

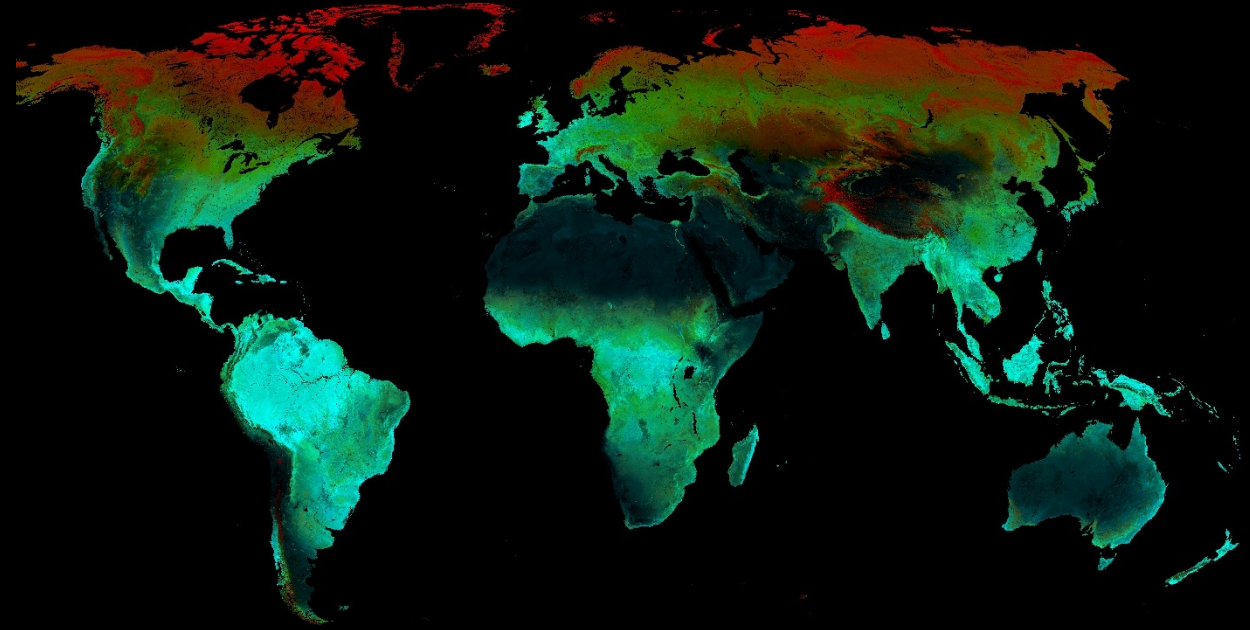
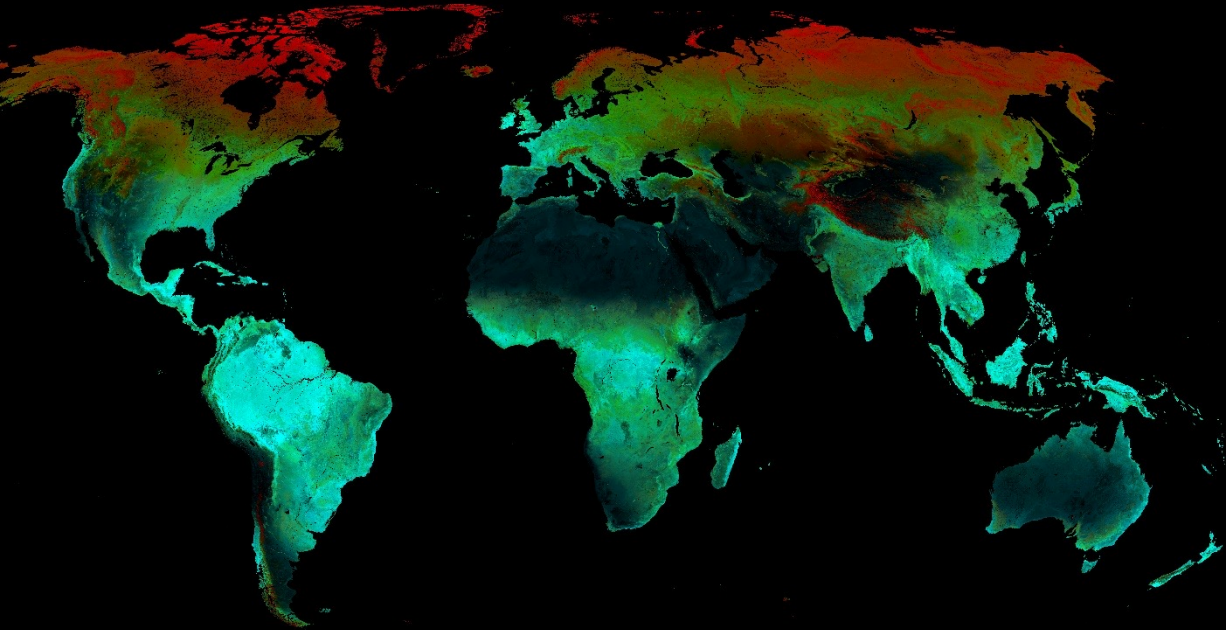
2020 Annual DHIs based on MODIS Terra C6.1 EVI



DHIs Product Status

MODIS 2013-2022 C6.1 EVI Aqua

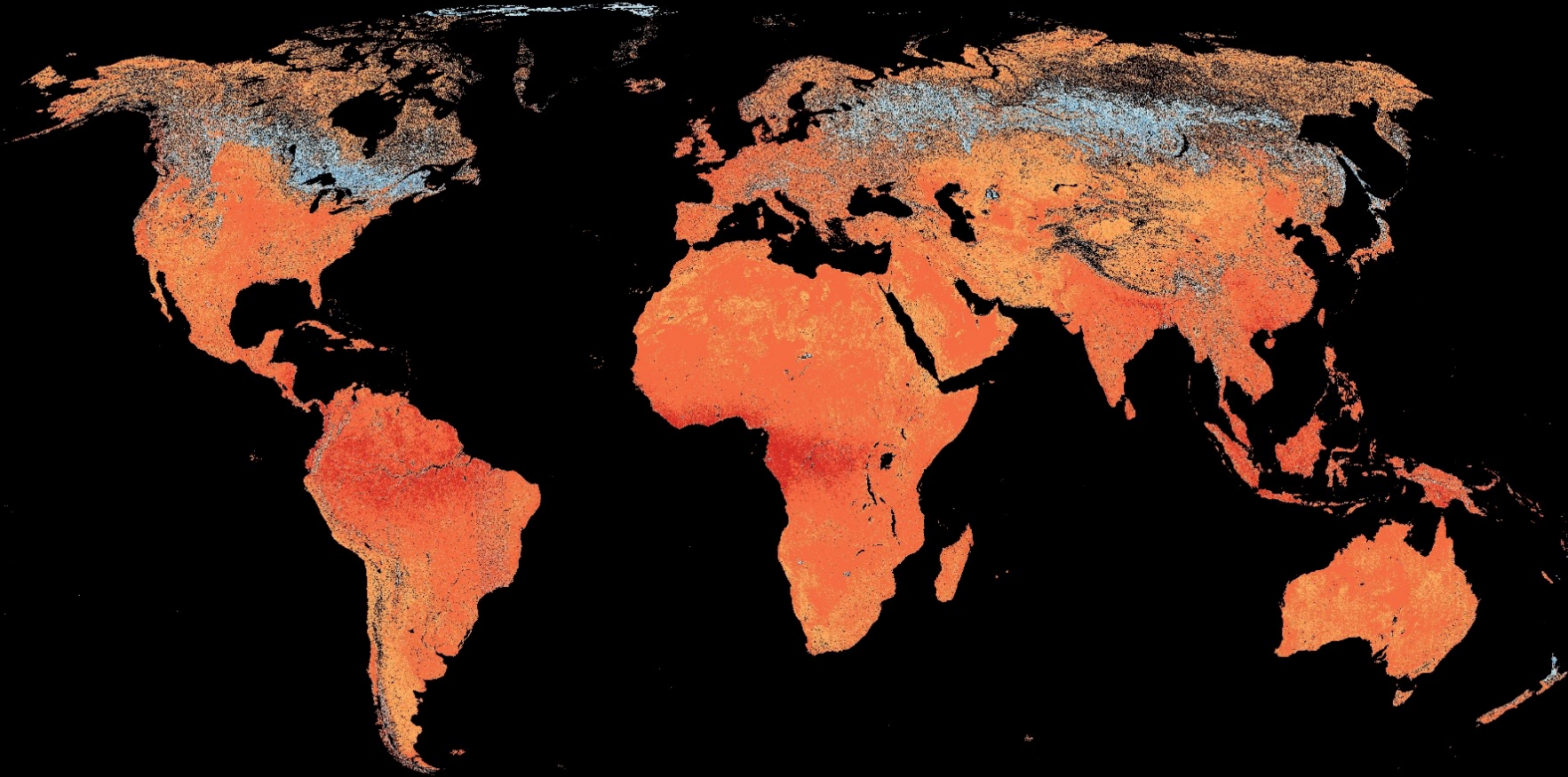
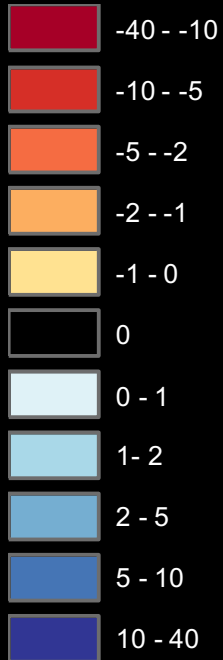
VIIRS 2013-2022 EVI version 1



DHIs Product Status

Cum-DHI EVI 2013-22: MODIS Aqua C6.1 minus VIIRS version 1

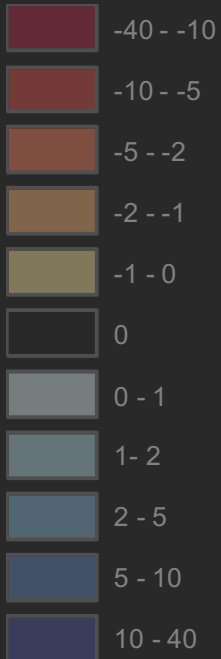
Cum-DHI



DHIs Product Status

VIIRS version 2 !!!

Cum-DHI



Outline

1. Introducing the DHIs
2. Product status updates
3. Uncertainty estimation
4. DHIs versus species richness and human settlements



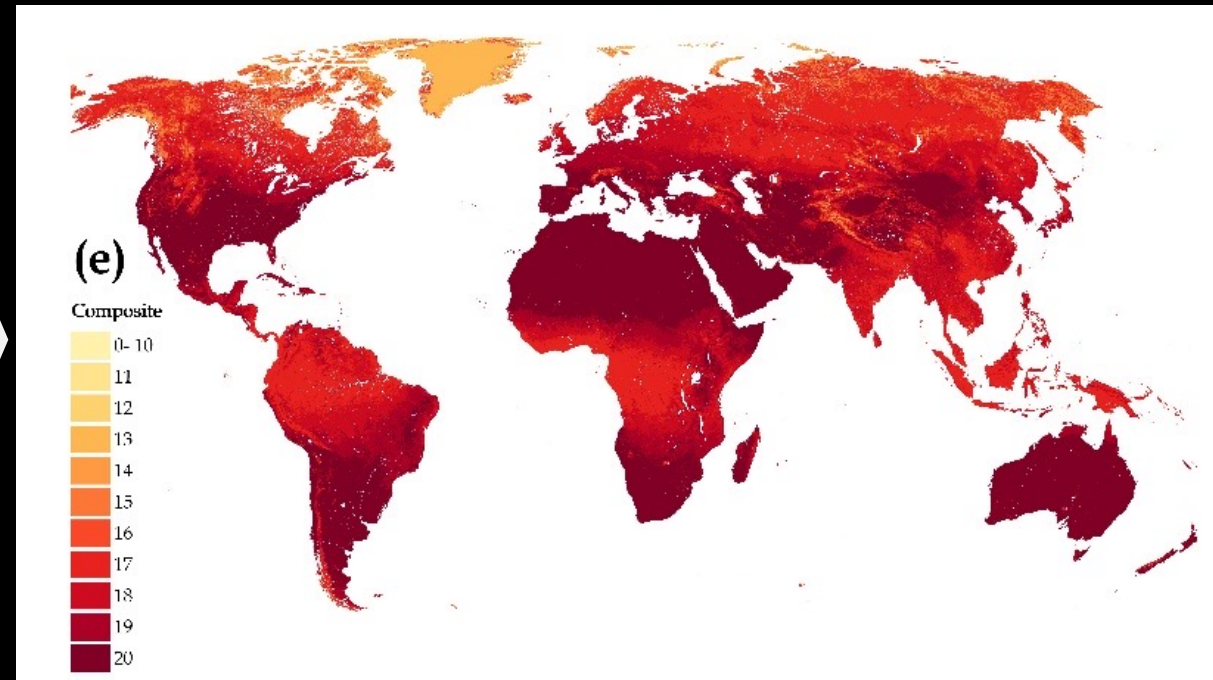
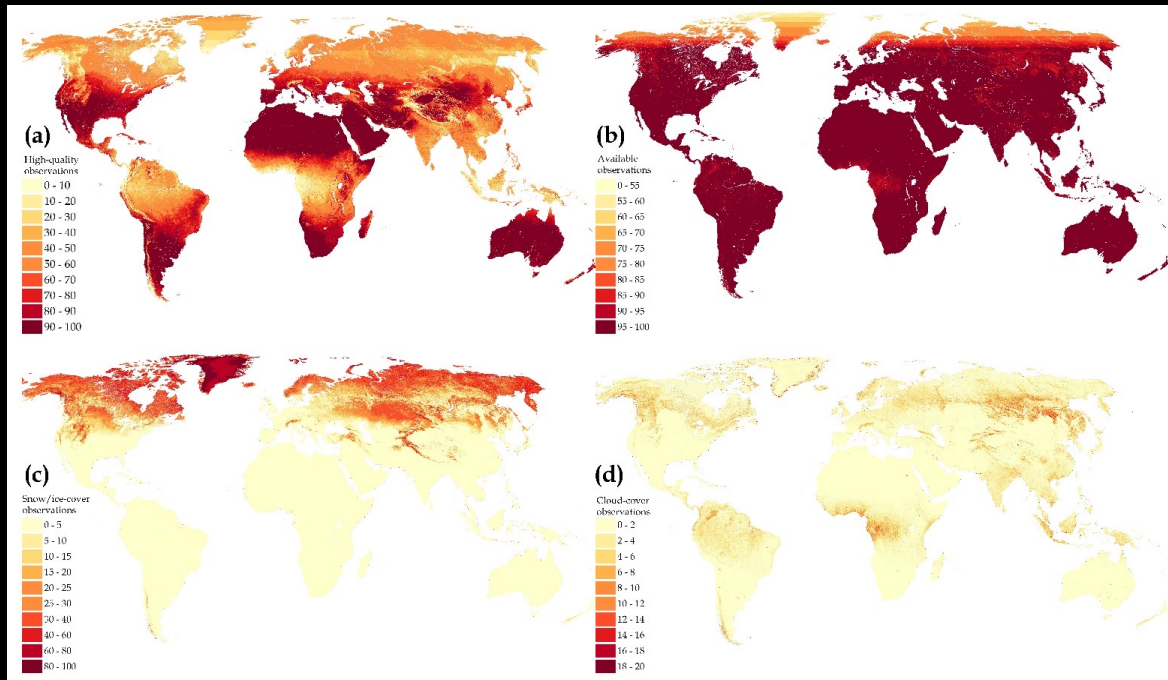
DHIs Uncertainty Estimation

MODIS Aqua EVI DHIs Quality Flags

% High-quality

% Available

Composite quality flag

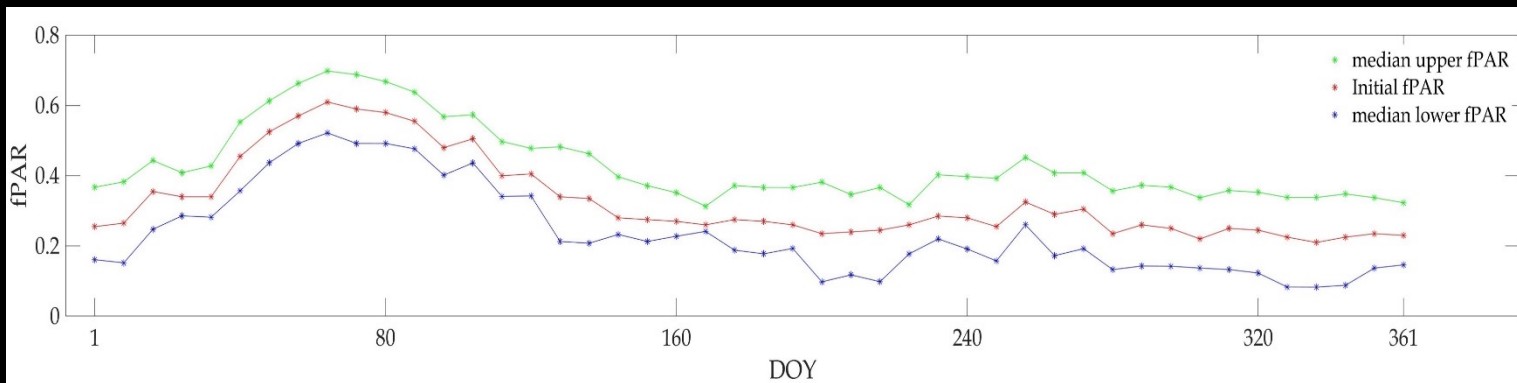
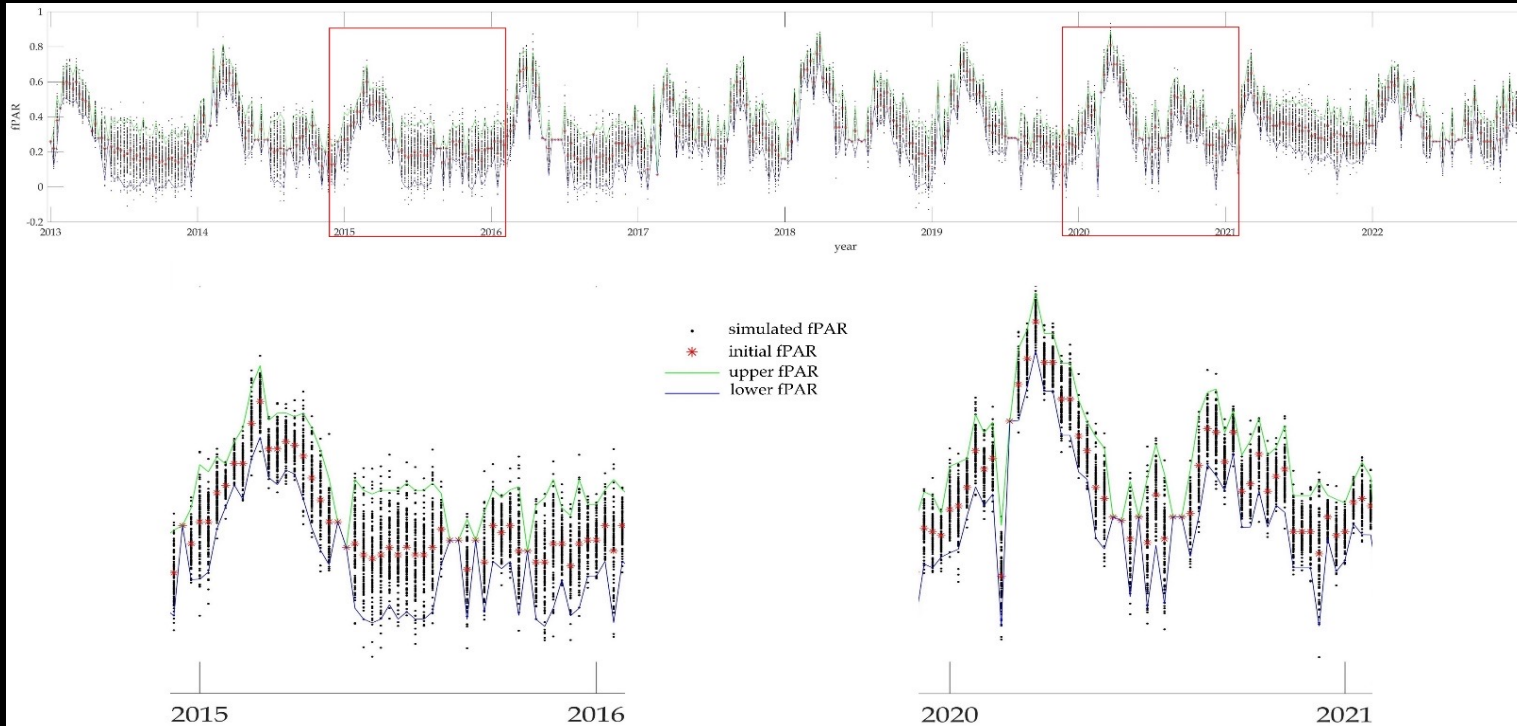


% Snow

% Cloud



DHIs Uncertainty Estimation



95% Confidence Interval

$$\text{lower: } X - Z_{\alpha/2} * \frac{\sigma}{\sqrt{n}}$$

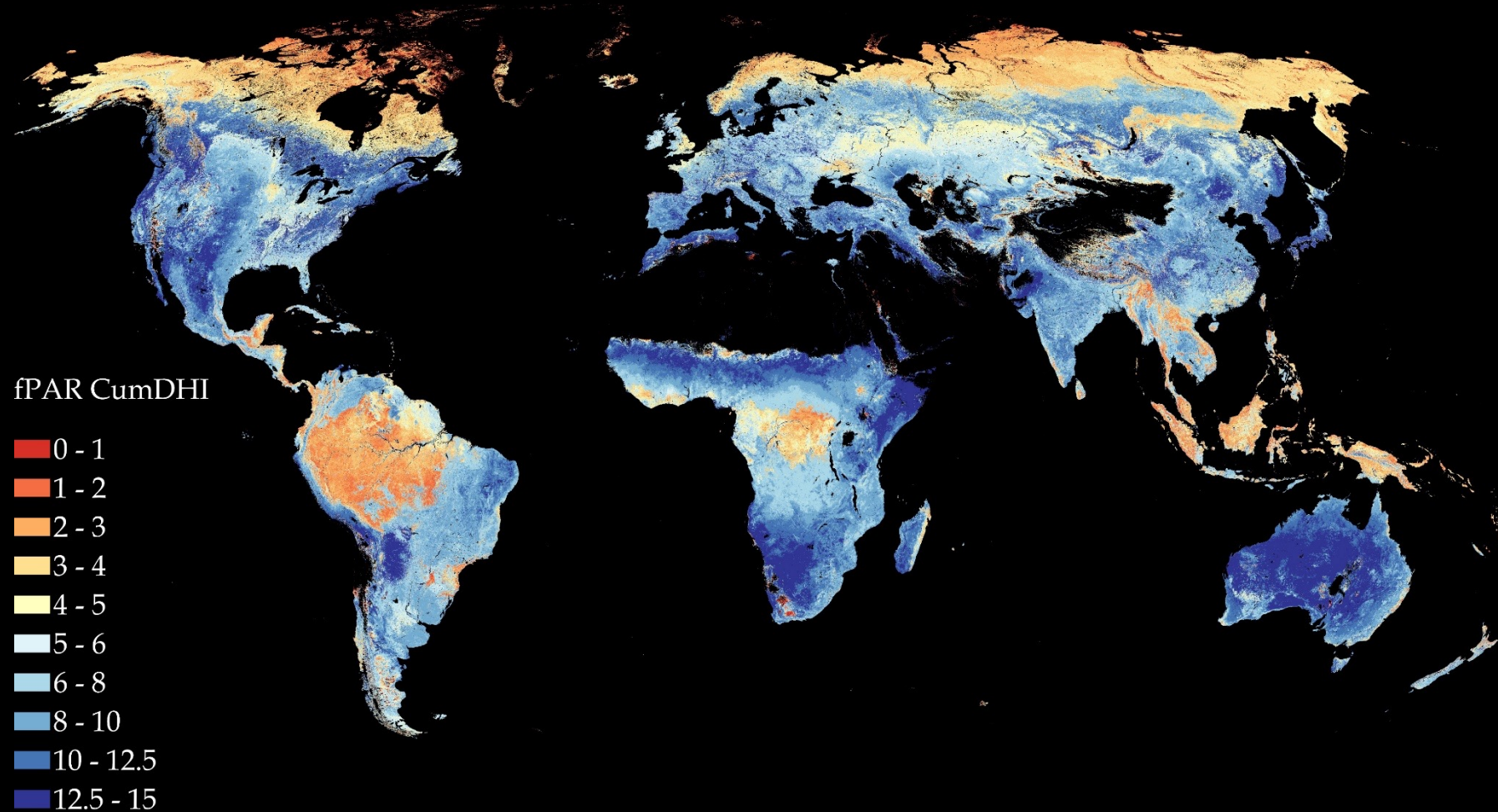
$$\text{upper: } X + Z_{\alpha/2} * \frac{\sigma}{\sqrt{n}}$$

	Cum. DHI	Min. DHI	Var. DHI
upper fPAR	43.1	31.3	3.9
estimated fPAR	32.8	21.0	2.8
lower fPAR	23.5	8.2	1.8



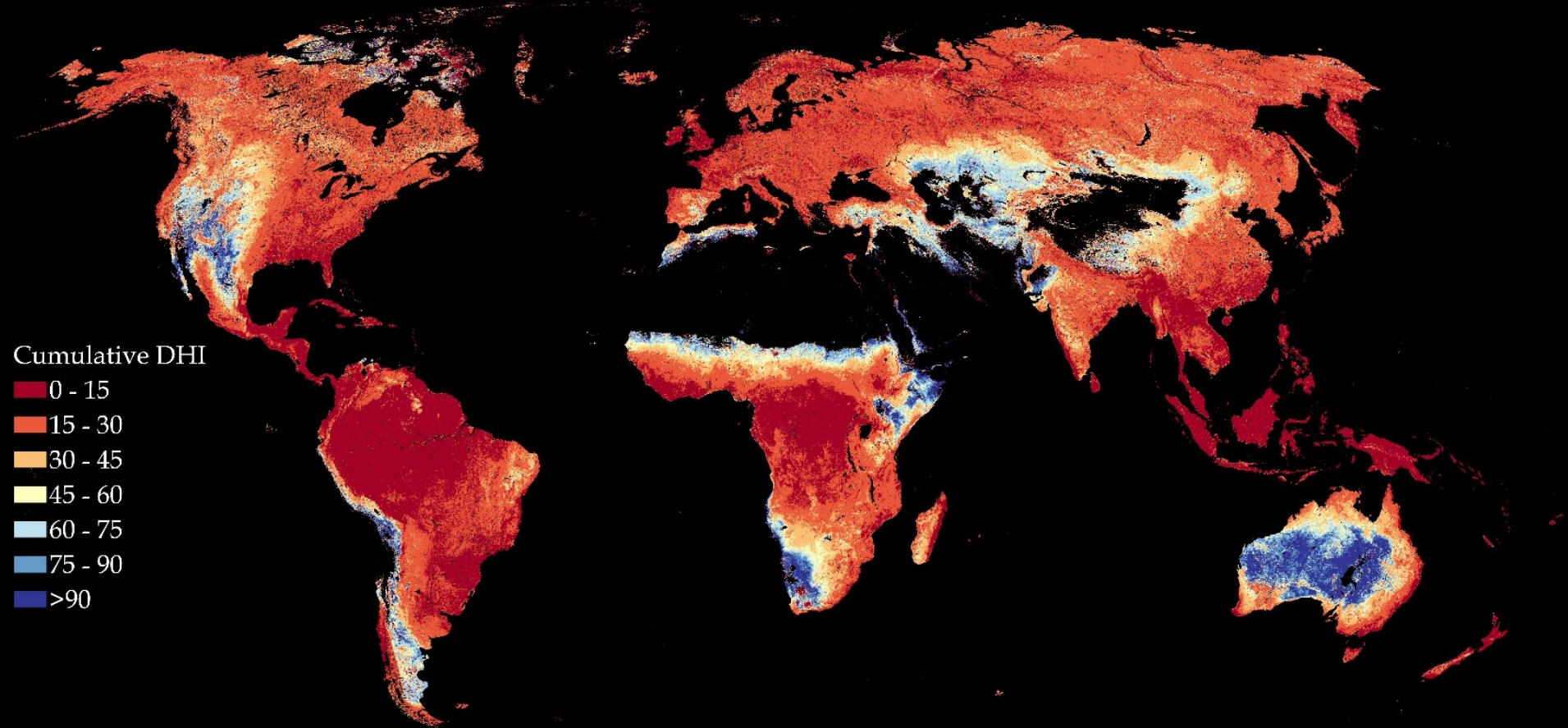
DHIs Uncertainty Estimation

fPAR Cumulative DHI: Upper minus Lower CI



DHIs Uncertainty Estimation

fPAR Cumulative DHI: \pm CI(%)

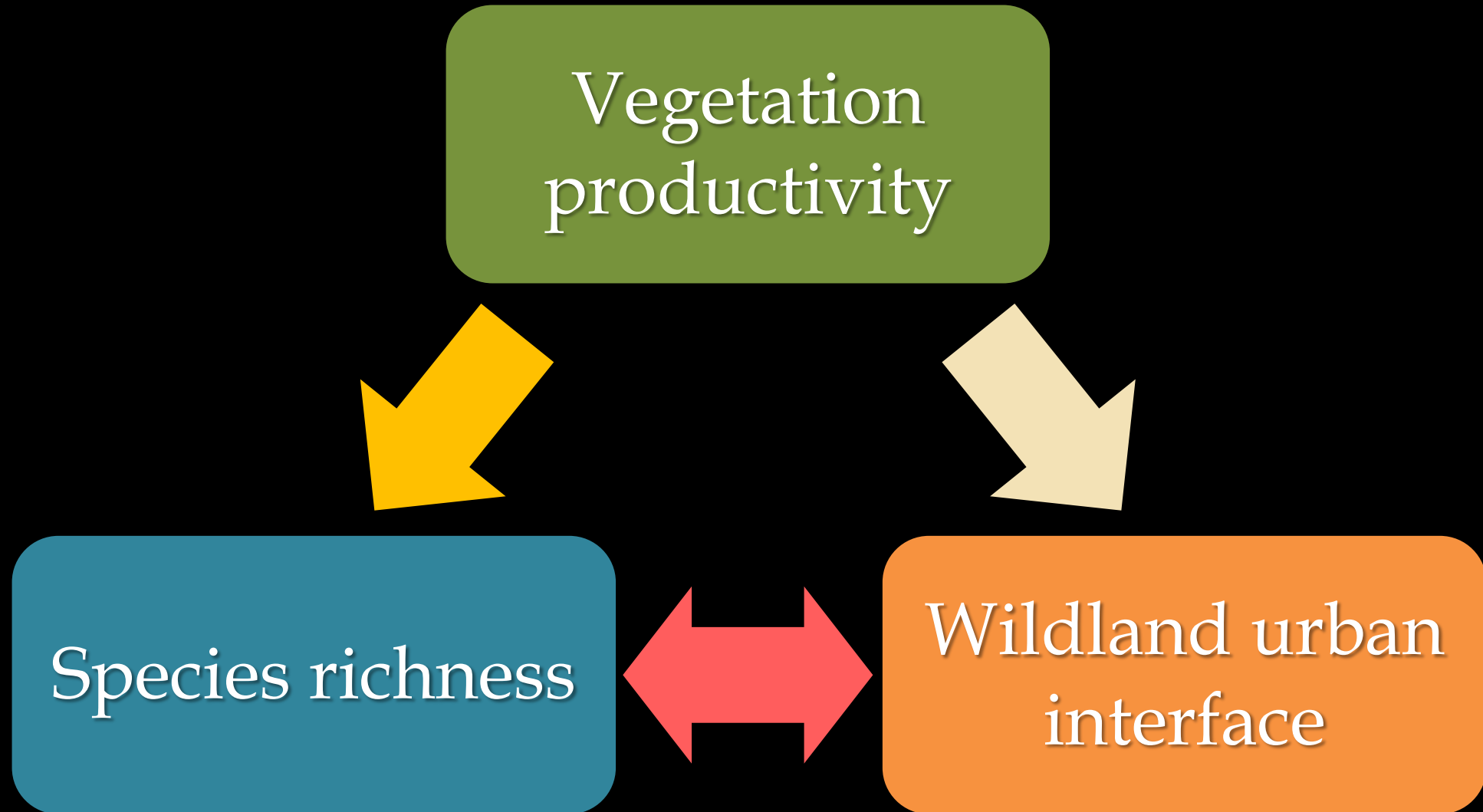


Outline

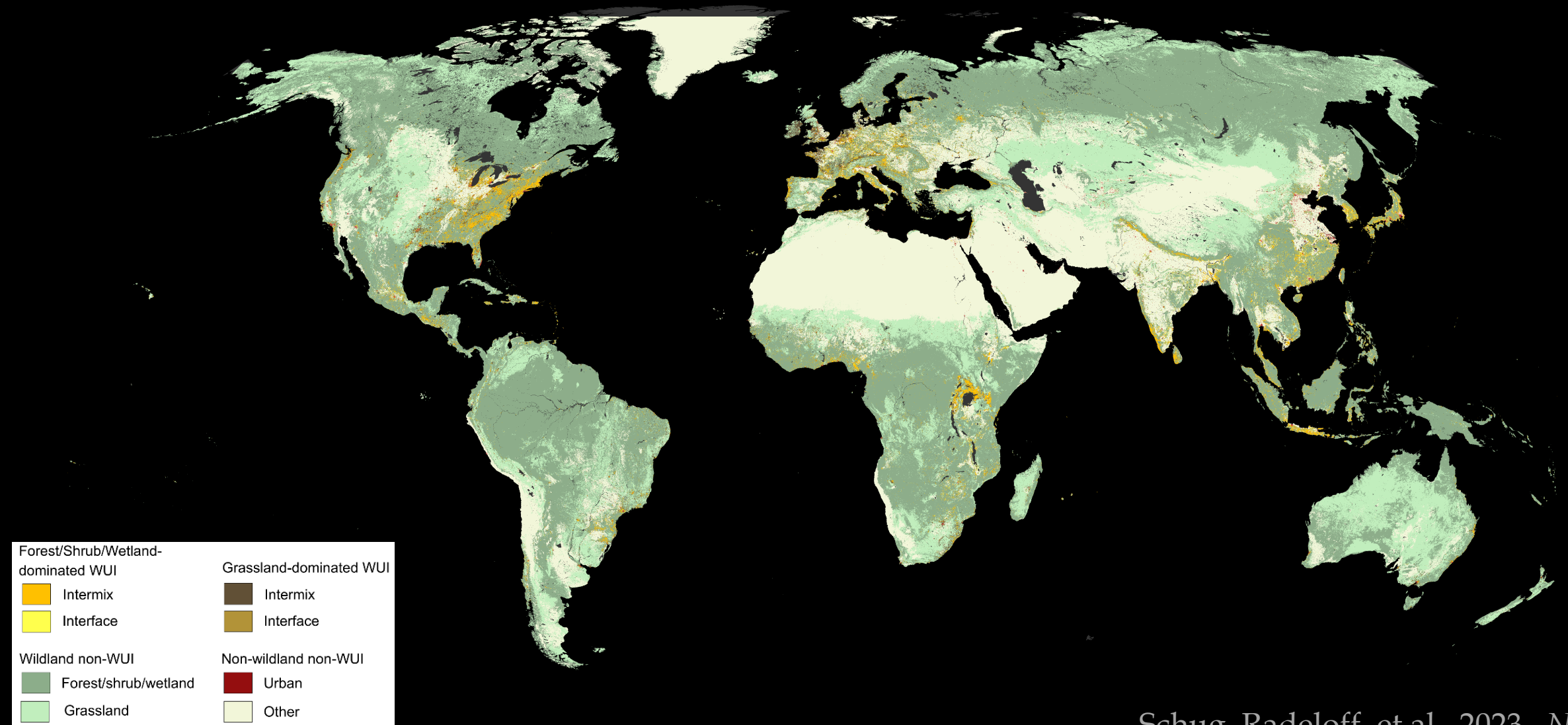
1. Introducing the DHIs
2. Product status updates
3. Uncertainty estimation
4. DHIs versus species richness and human settlements



DHIs, species richness, and WUI



DHIs, species richness, and WUI

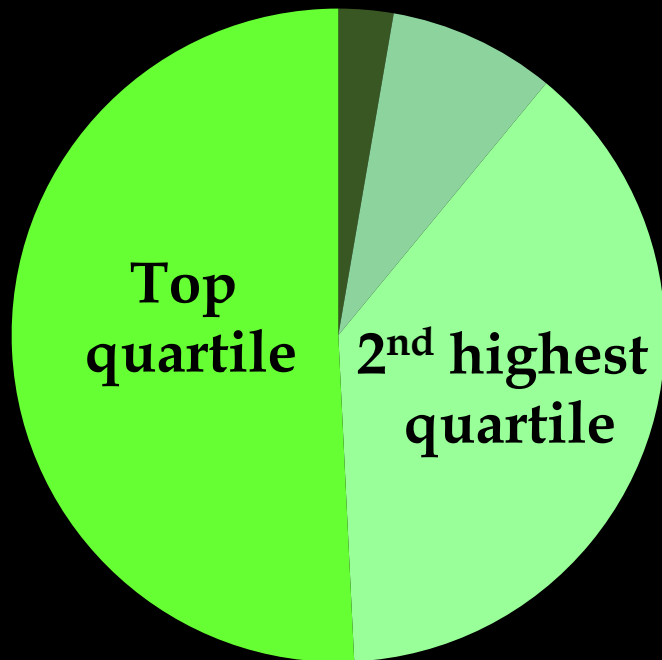


Schug, Radeloff, et al., 2023. *Nature*

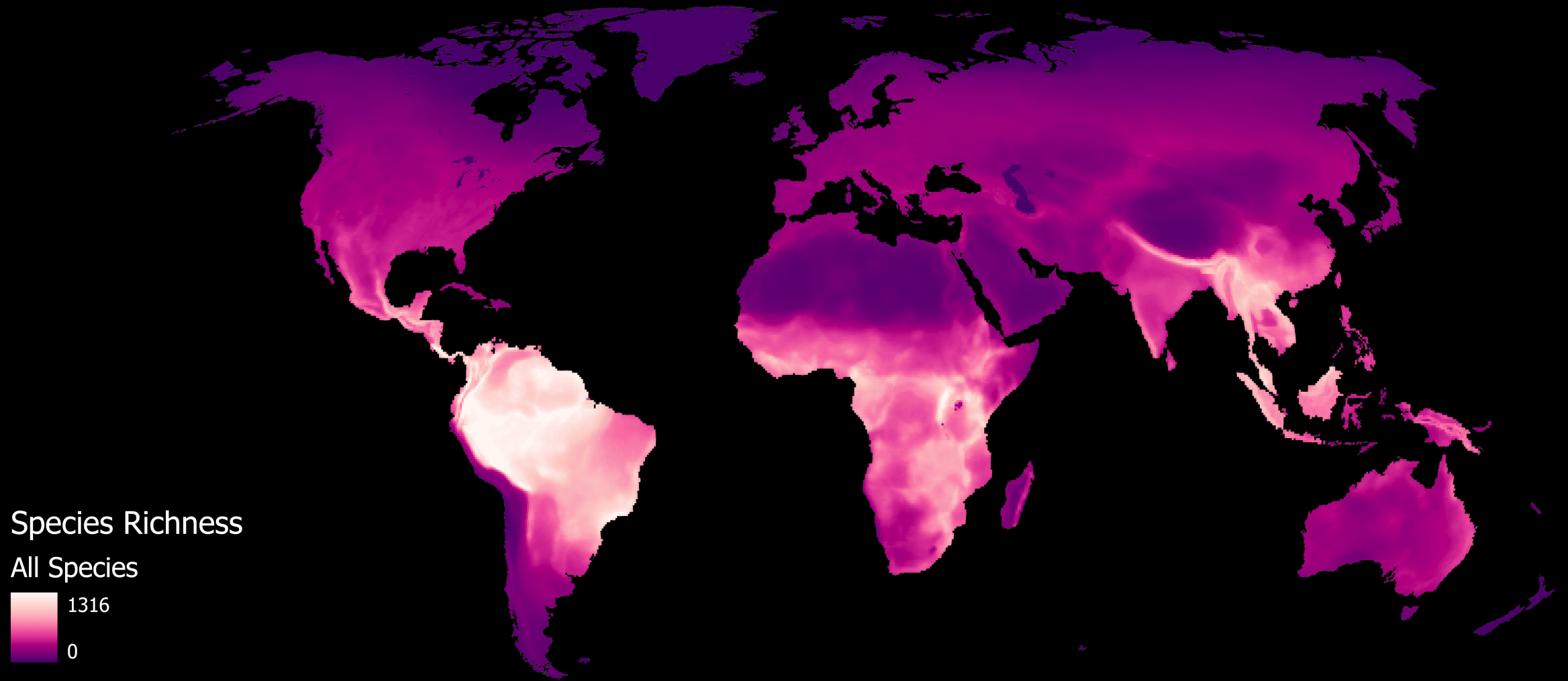


DHIs, species richness, and WUI

Productivity

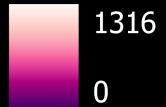


DHIs, species richness, and WUI



Species Richness

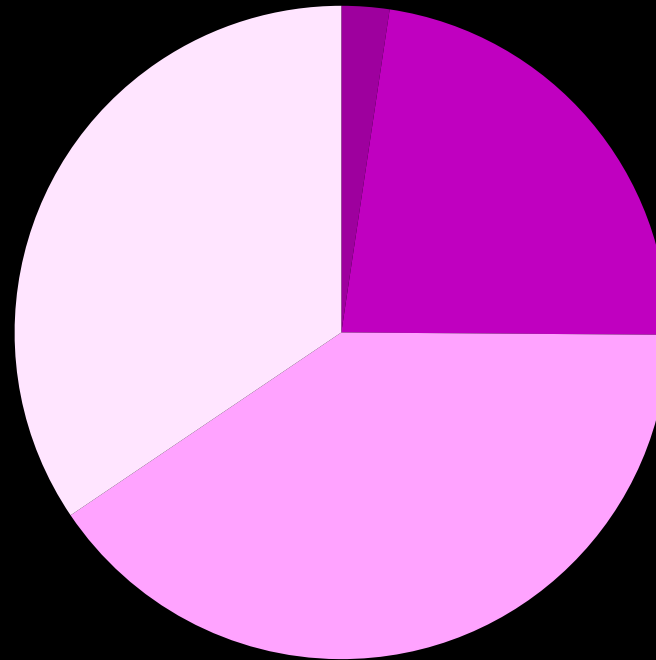
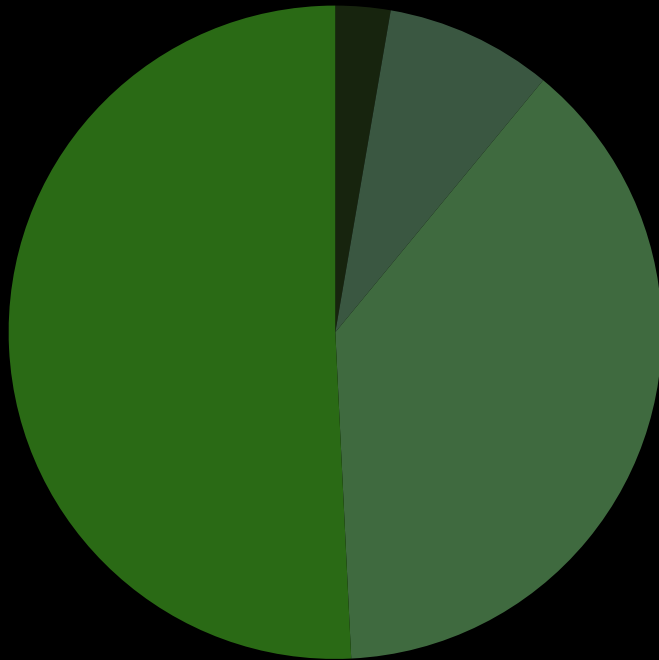
All Species



DHIs, species richness, and WUI

Productivity

All Tetrapods

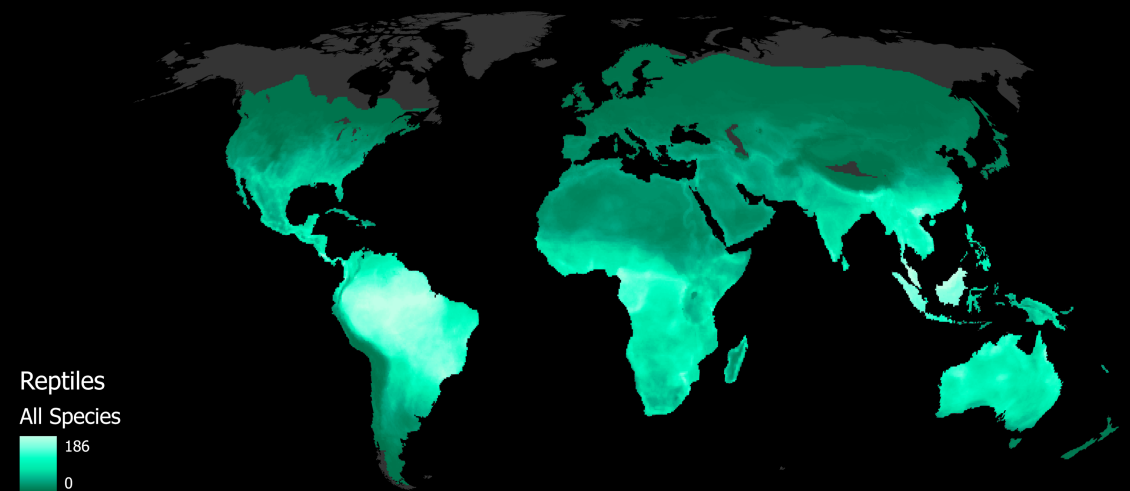
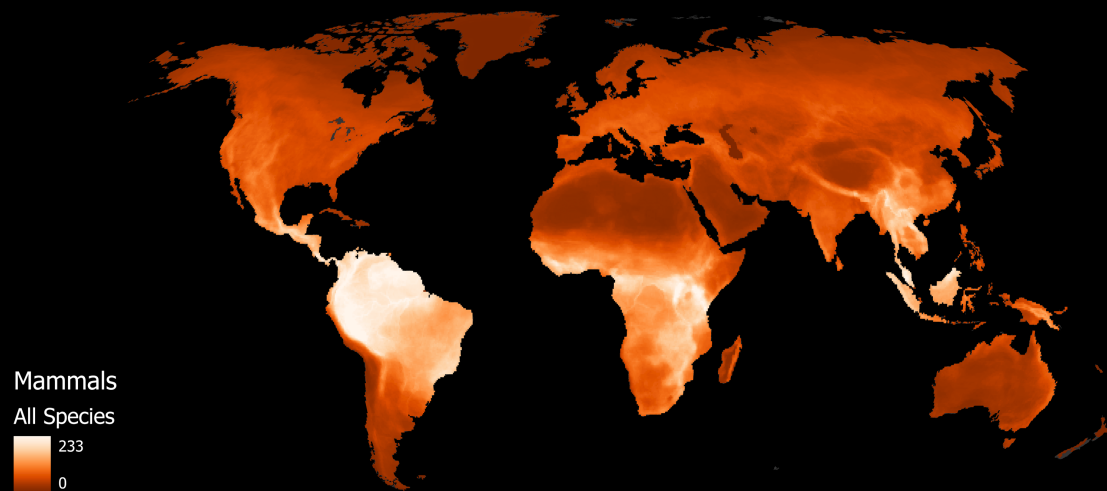
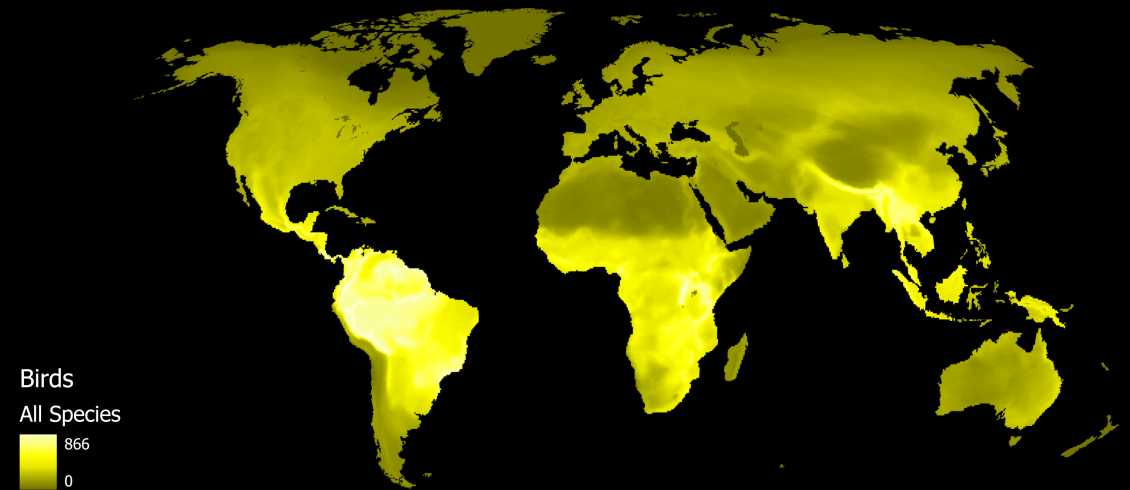
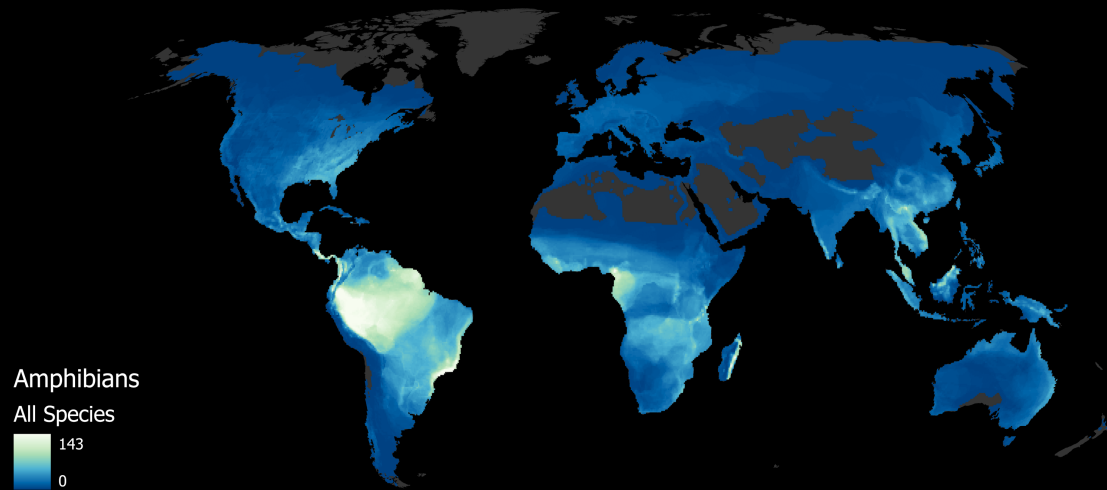


Low Medium-Low
Medium-High High

Low Medium-Low
Medium-High High



DHIs, species richness, and WUI

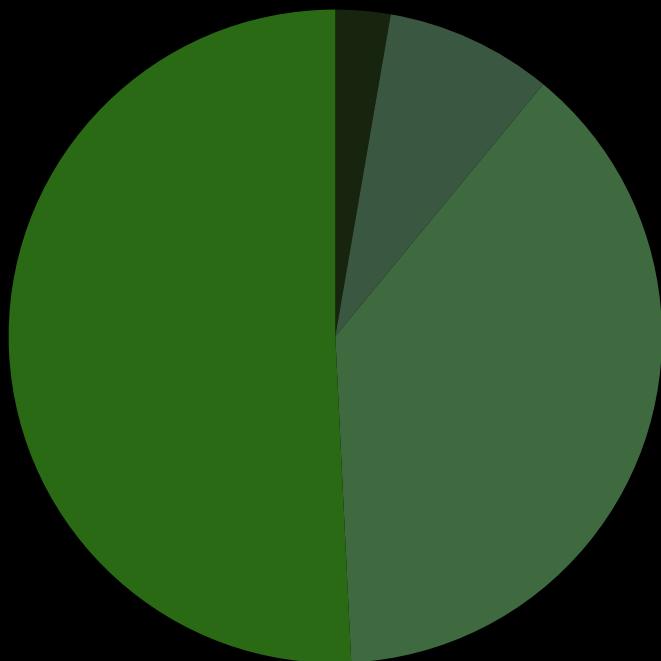


Cox, Young, Bowles, et al. *Nature* (2022)



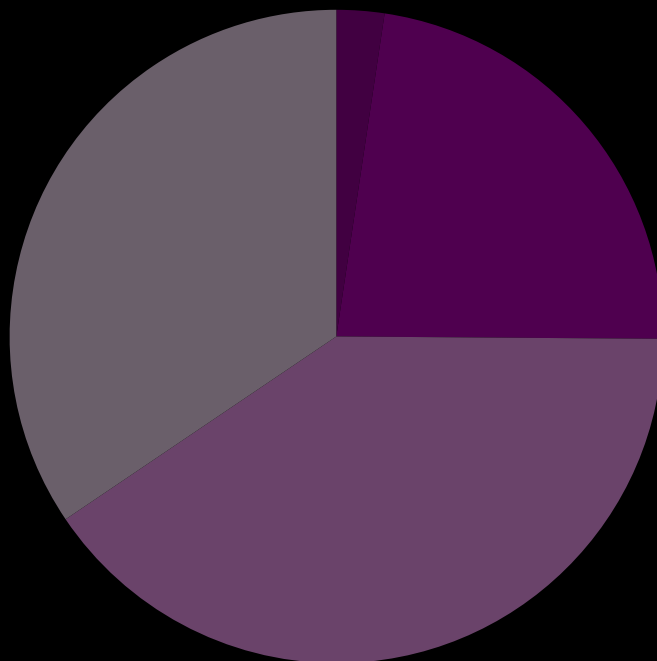
DHIs, species richness, and WUI

Productivity



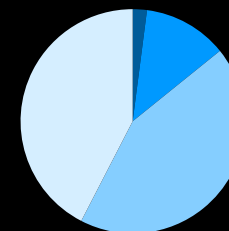
■ Low ■ Medium-Low
■ Medium-High ■ High

All Tetrapods



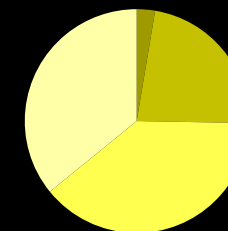
■ Low ■ Medium-Low
■ Medium-High ■ High

Amphibians



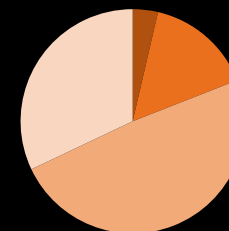
■ Low ■ Medium-Low
■ Medium-High ■ High

Birds



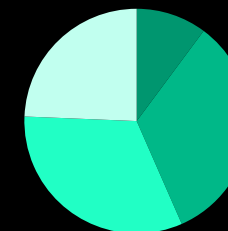
■ Low ■ Medium-Low
■ Medium-High ■ High

Mammals



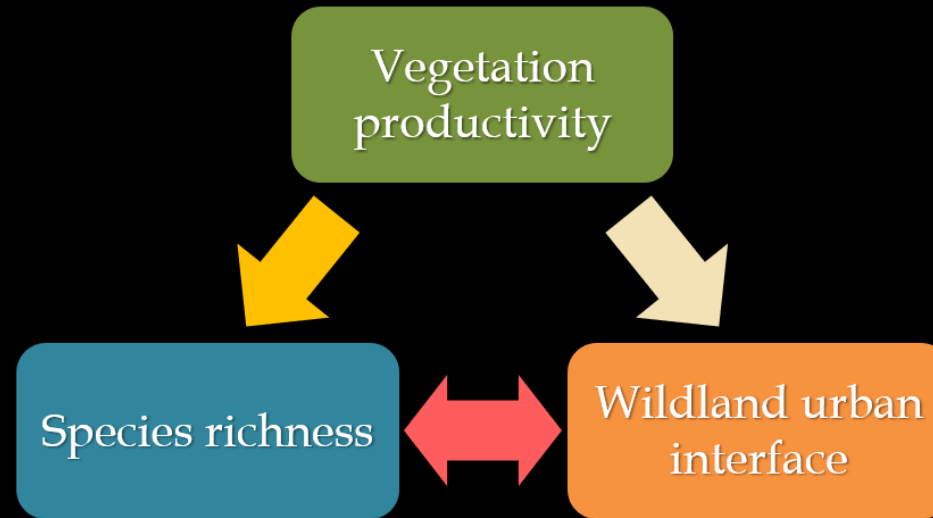
■ Low ■ Medium-Low
■ Medium-High ■ High

Reptiles

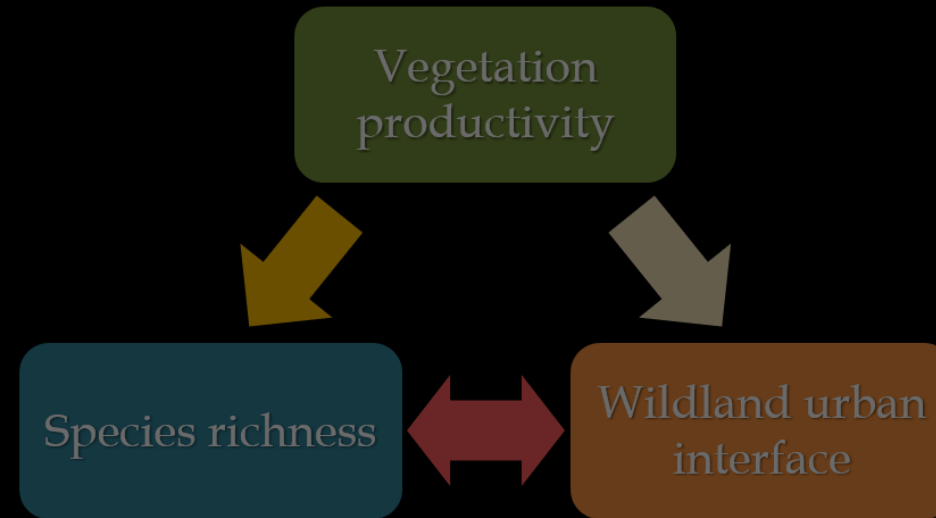


■ Low ■ Medium-Low
■ Medium-High ■ High

DHIs, species richness, and WUI



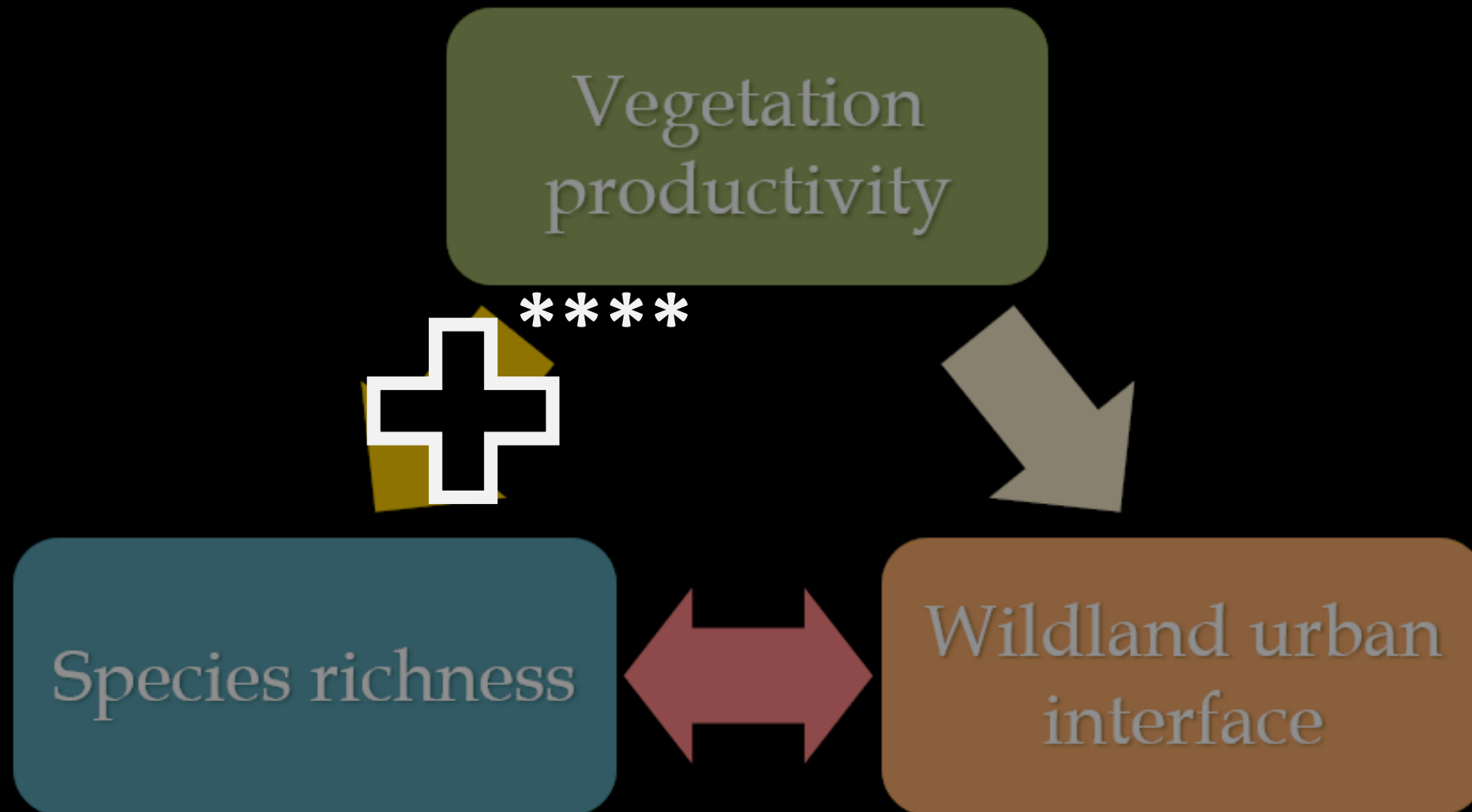
DHIs, species richness, and WUI



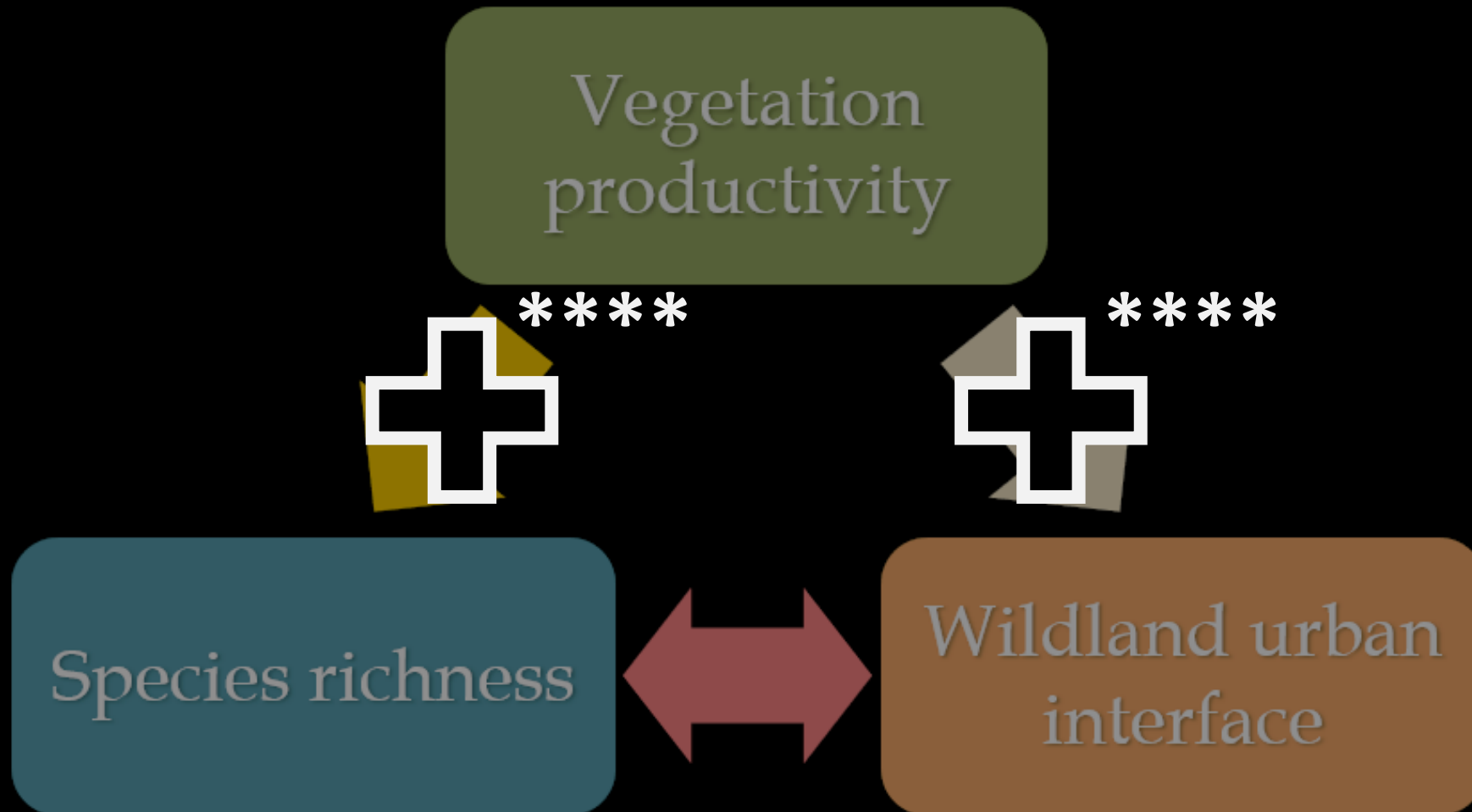
$\text{SpeciesRichness} \wedge \text{WUI} \sim \text{CumDHI}$

remotePARTS: multivariate regression, global dataset,
accounting for spatial autocorrelation

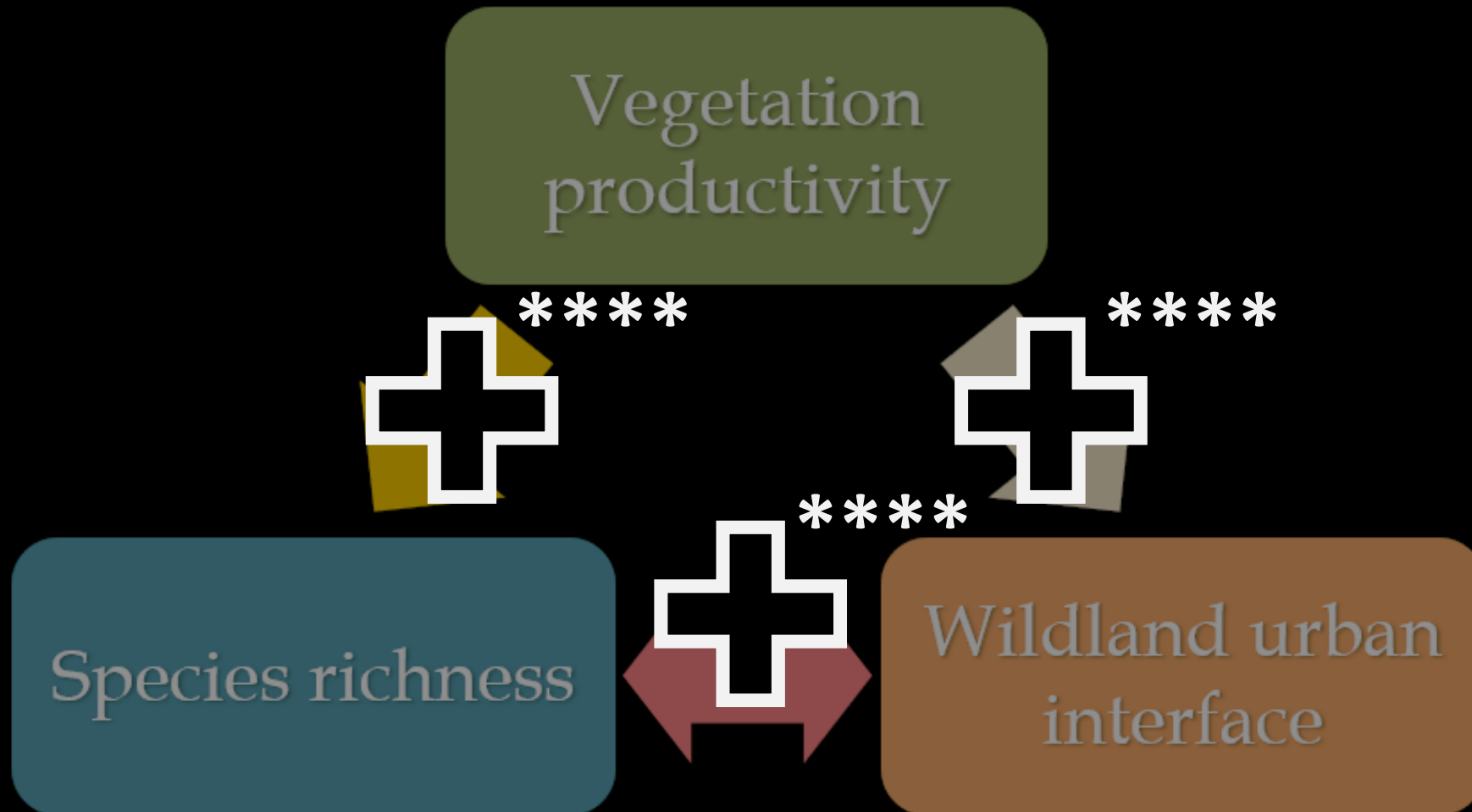
DHIs, species richness, and WUI



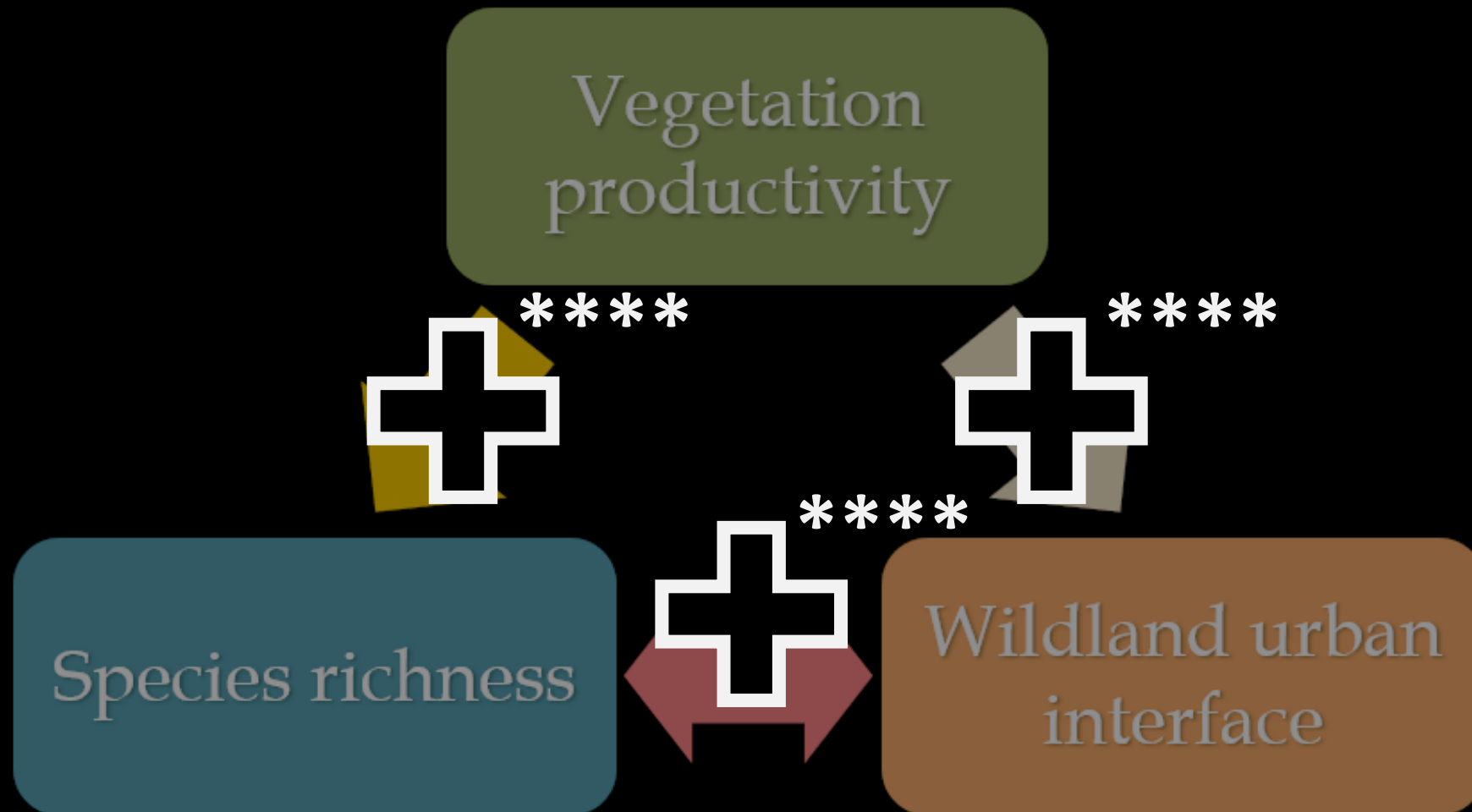
DHIs, species richness, and WUI



DHIs, species richness, and WUI



DHIs, species richness, and WUI

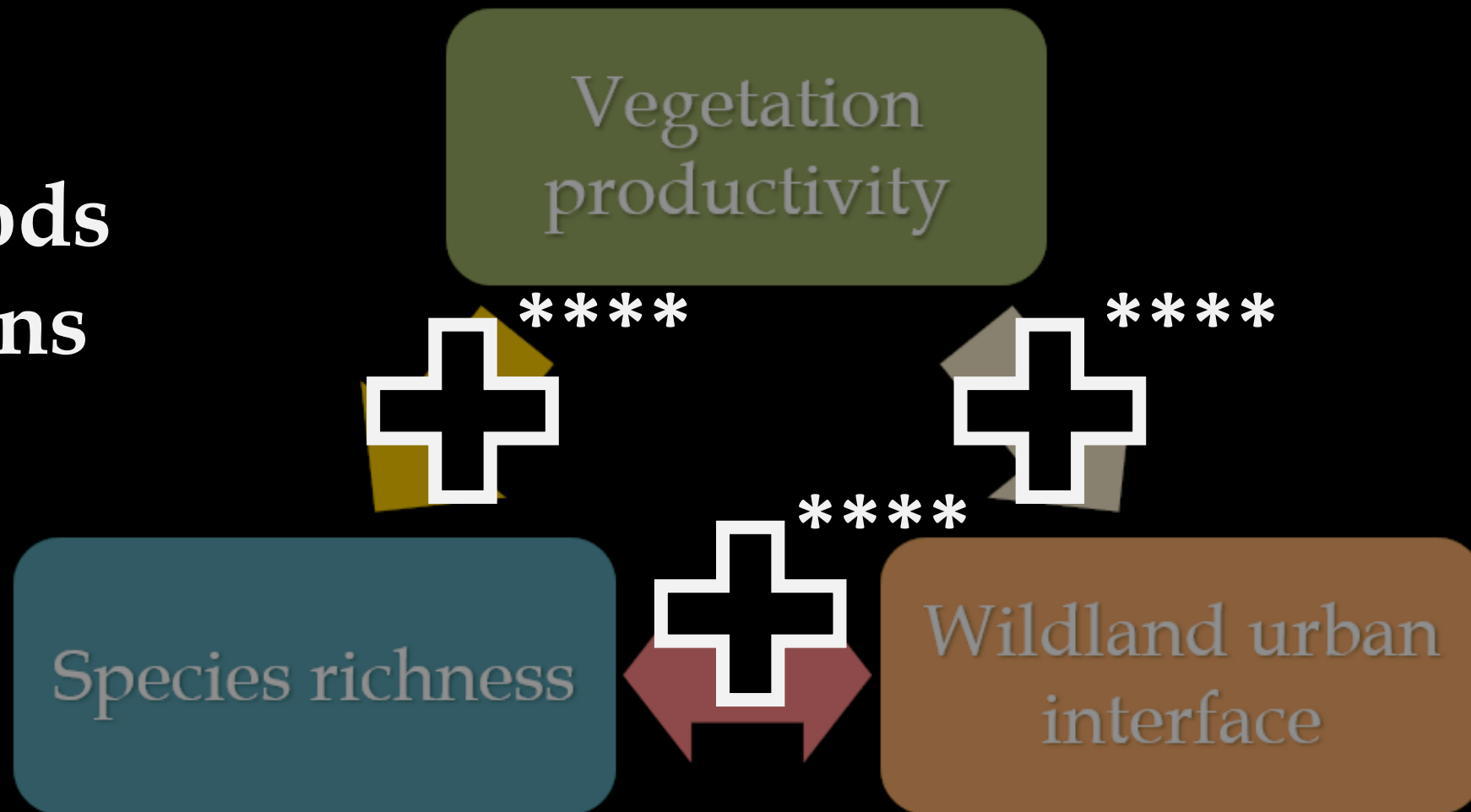


additional $r = 0.3$

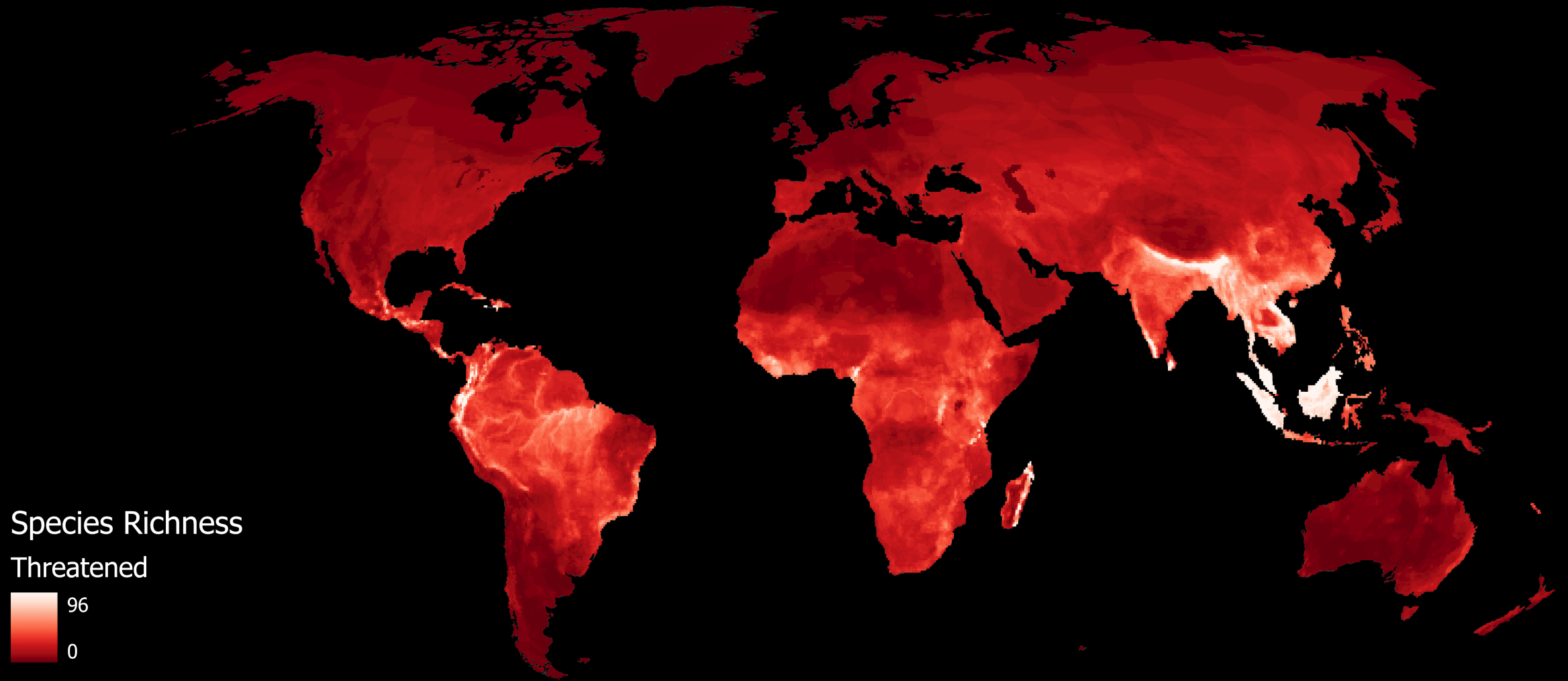
DHIs, species richness, and WUI

Richness of:

- All tetrapods
- Amphibians
- Birds
- Mammals
- Reptiles



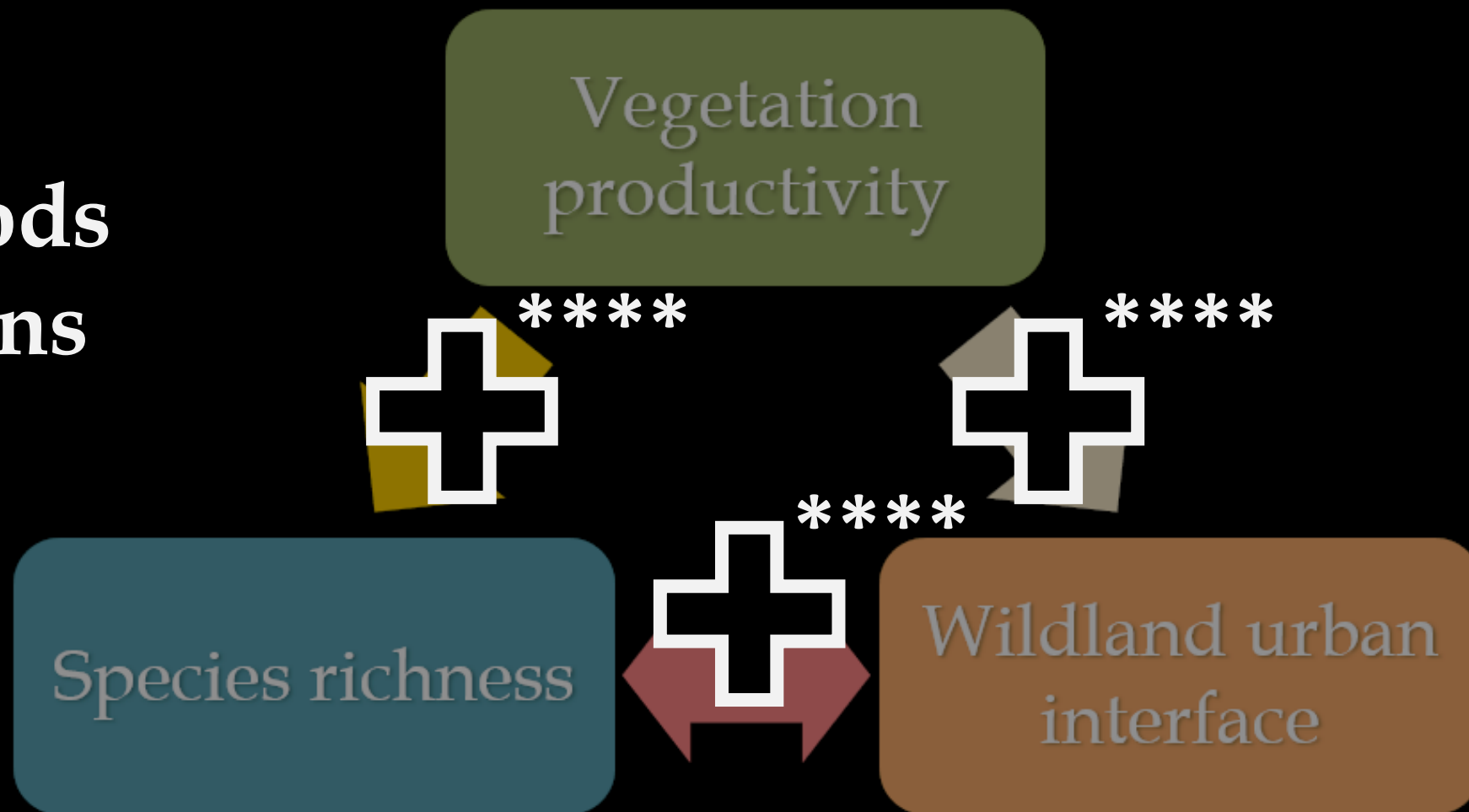
DHIs, species richness, and WUI



DHIs, species richness, and WUI

Richness of:

- All tetrapods
- Amphibians
- Birds
- Mammals
- Reptiles
- Threatened species



Outline

1. Introducing the DHIs
2. Product status updates
3. Uncertainty estimation
4. DHIs versus species richness and human settlements



Conclusions

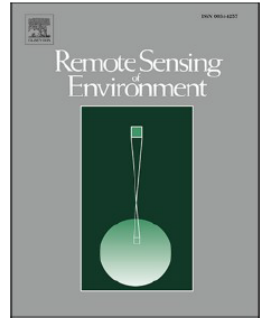


ELSEVIER

Contents lists available at [ScienceDirect](#)

Remote Sensing of Environment

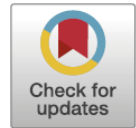
journal homepage: www.elsevier.com/locate/rse



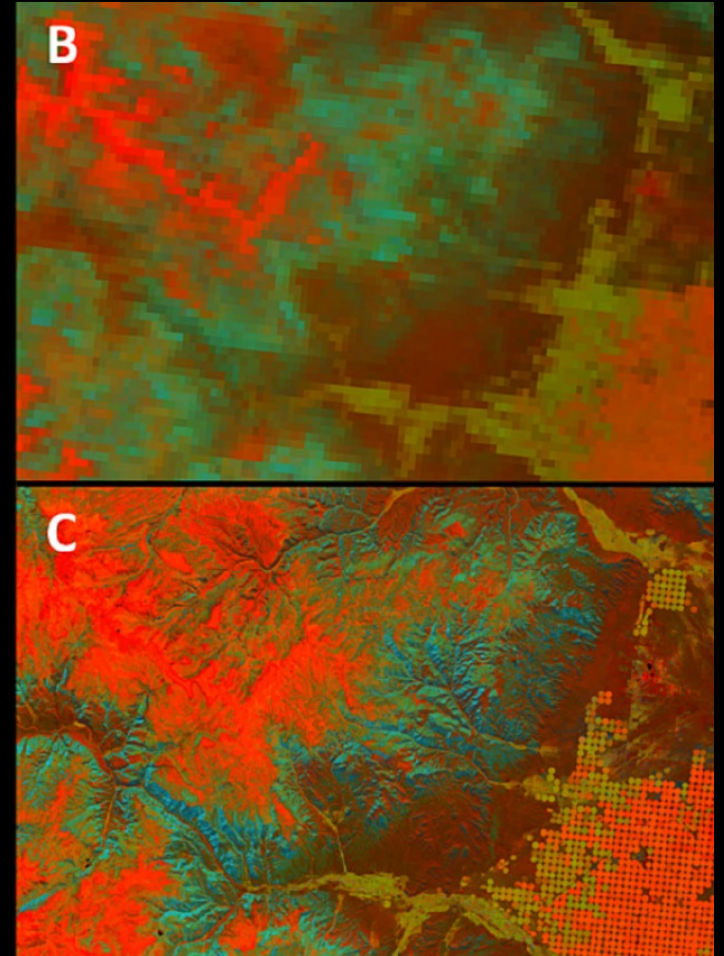
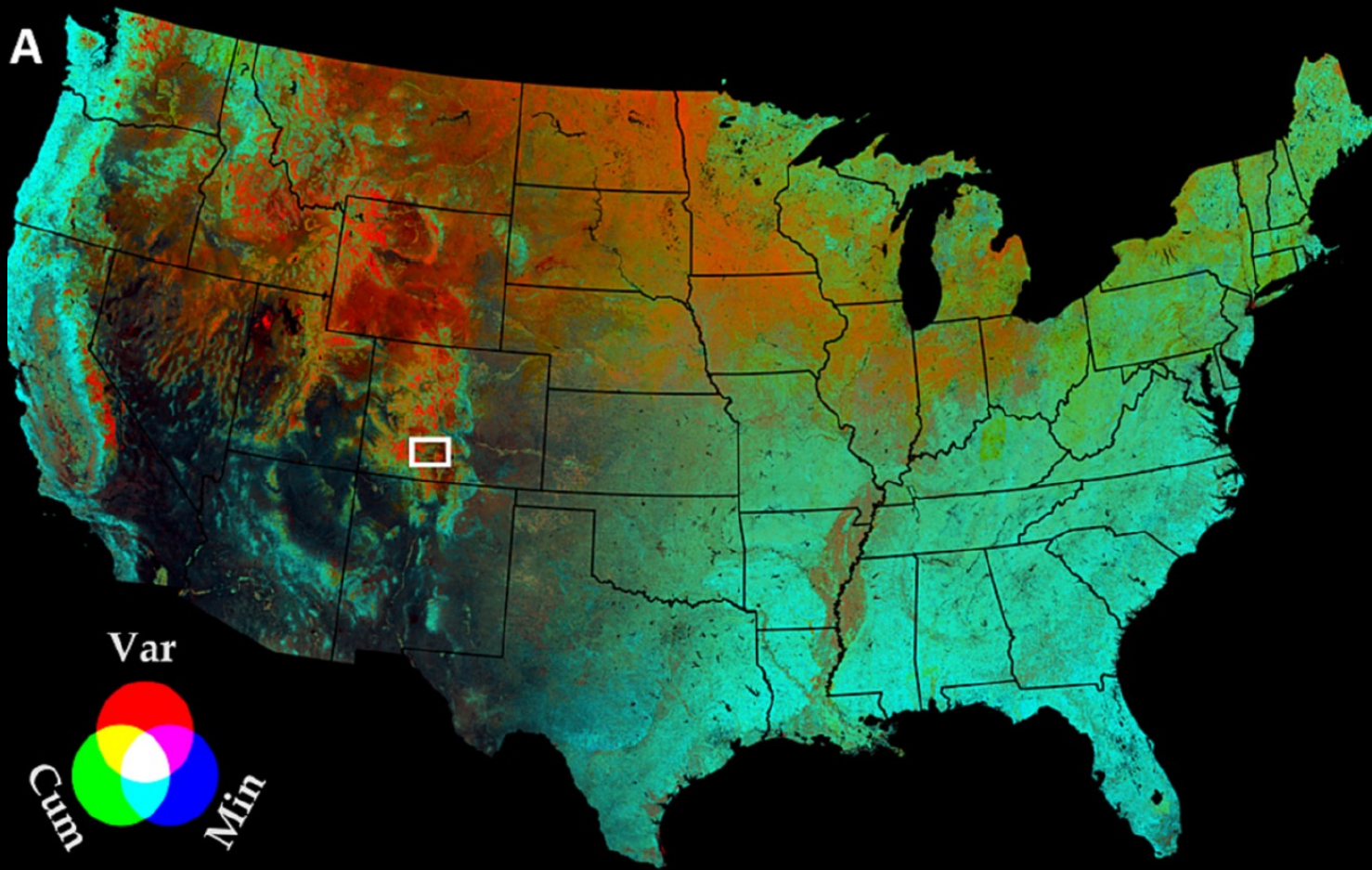
Review

Need and vision for global medium-resolution Landsat and Sentinel-2 data products

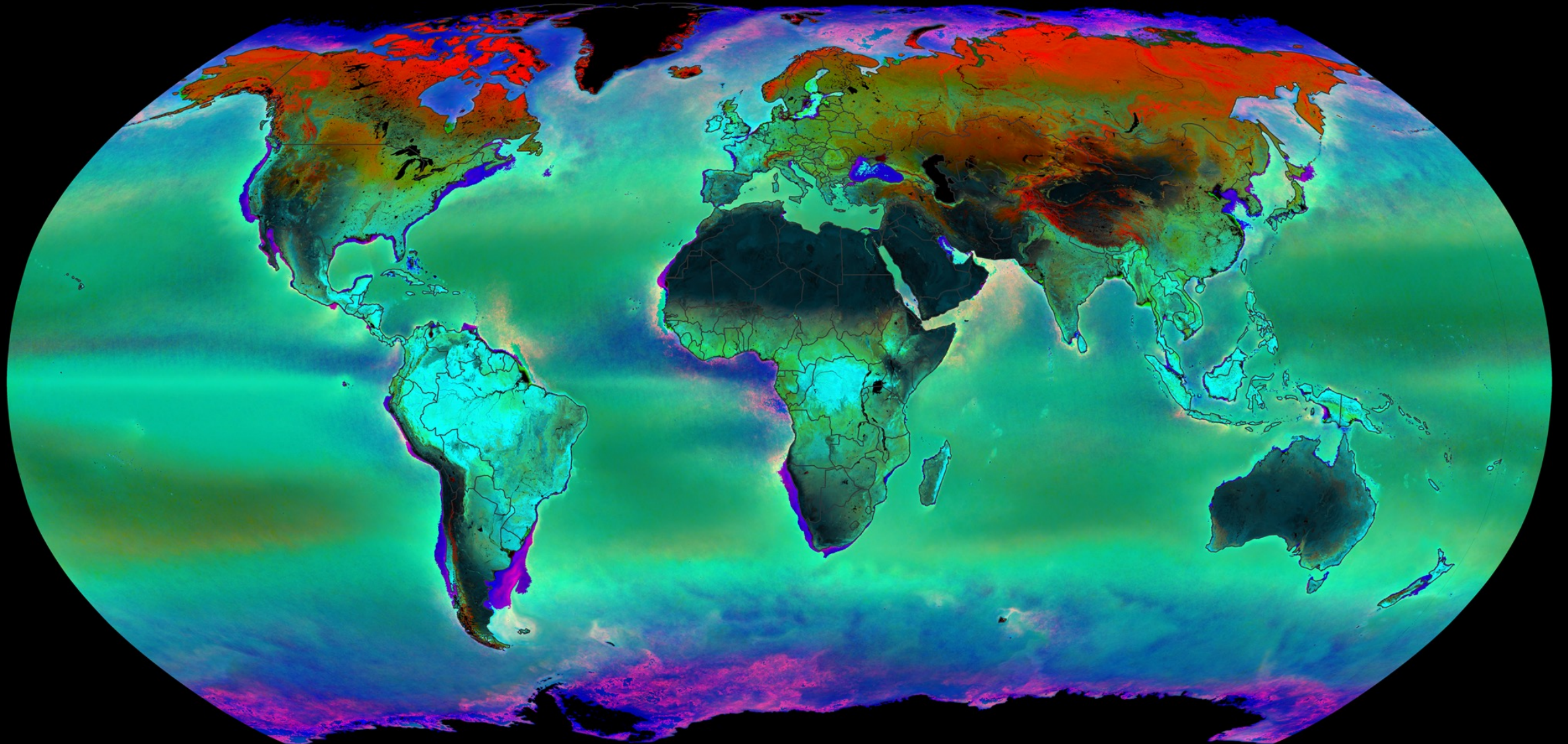
Volker C. Radeloff^{a,*}, David P. Roy^b, Michael A. Wulder^c, Martha Anderson^d, Bruce Cook^e, Christopher J. Crawford^f, Mark Friedl^g, Feng Gao^d, Noel Gorelick^h, Matthew Hansenⁱ, Sean Healey^j, Patrick Hostert^{k,l}, Glynn Hulley^m, Justin L. Huntingtonⁿ, David M. Johnson^o, Chris Neigh^e, Alexei Lyapustin^e, Leo Lymburner^p, Nima Pahlevan^e, Jean-Francois Pekel^q, Theodore A. Scambos^r, Crystal Schaaf^s, Peter Strobl^q, Curtis E. Woodcock^g, Hankui K. Zhang^t, Zhe Zhu^u



Conclusions



Conclusions



Conclusions

SILVIS Lab

- Hobi, 2017, *RSE*
- Radeloff, 2019, *RSE*
- Hobi, 2021, *Ecol Ind*
- Rapacciuolo, 2017, *GEB*
- Coops, 2018, *Sci Rep*
- Marin, 2018, *Proc R Soc B*
- Coops, 2019, *Ecol Ind*
- Rapacciuolo, 2019, *Nature E&E*
- Suttidate, 2019, *RSE*
- Razenkova, 2020, *Sci Rep*
- Silveira, 2021, *RSE*
- Silveira, 2022, *EcoApps*
- Suttidate, 2021, *GECCO*
- Carroll, 2022, *EcoApps*
- Razenkova, 2023, *J. BioG*
- Silveira, 2023, *RSE*
- Suttidate, 2023, *Bio Cons*
- Carroll, 2023, *EcoApps*
- Carroll, 2024, *EcoApps*
- Radeloff, 2024, *RSE*

Other Users

Richness

- Algal species richness / Siberia
- Plant diversity / India
- Mammal richness / Xinjiang
- Mammals & Birds / Pamir
- Bird diversity / France
- Raptor richness / Americas
- ...

Species distributions

- Dwarf honeybee / Iran
- Sandhill crane / US
- Brown bear / Cantabria
- Caribou / US
- Moose / China
- Andean Condor / Argentina
- Grey Foxes / US
- Philippine Eagle / Philippines
- Grizzly bear / Canada
- White-tailed deer / US
- Purple-winged Ground Dove
- Mountain Tapir / Peru
- Serpent Eagle / Madagascar
- ...



Thank you!!!

