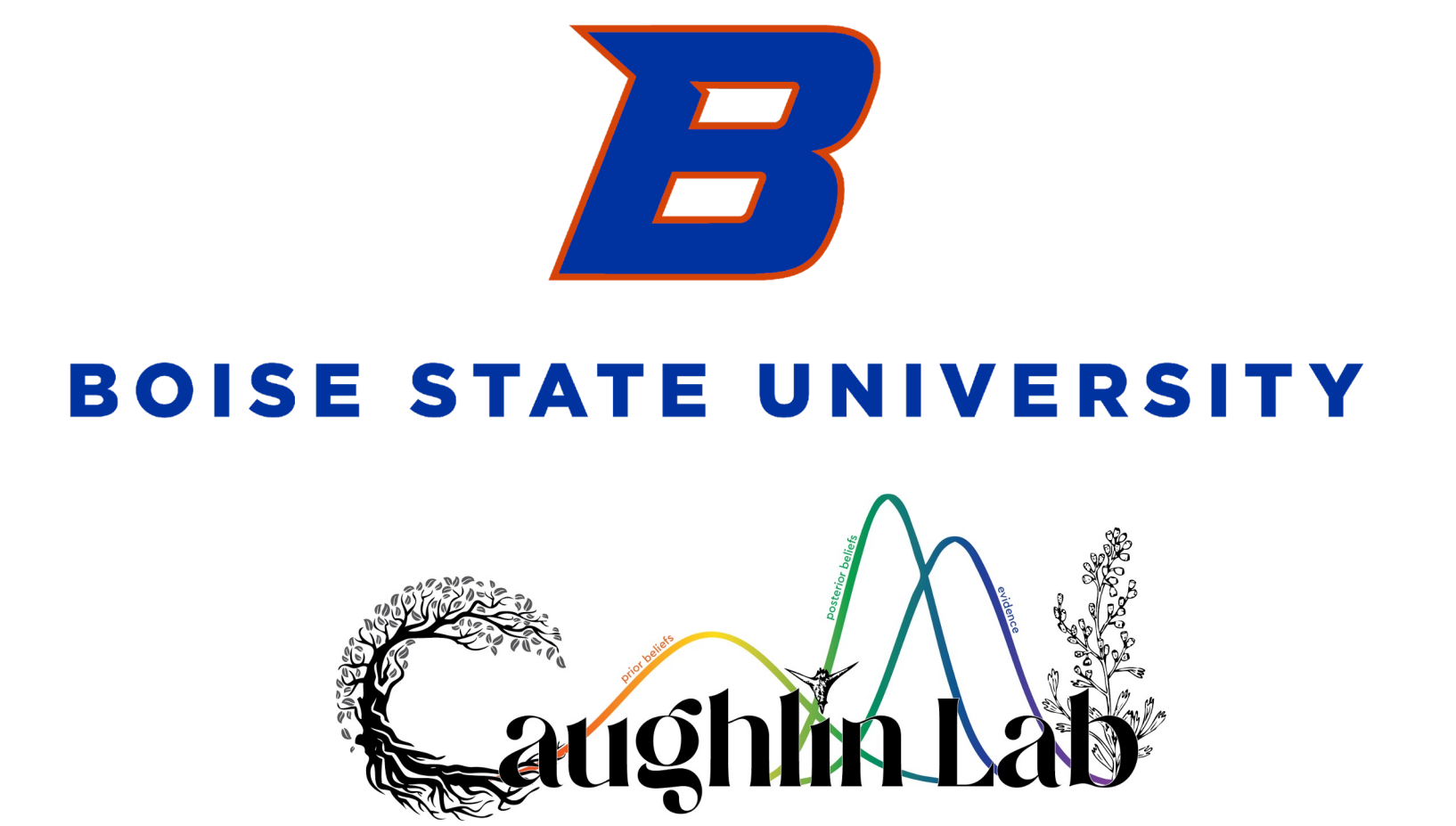


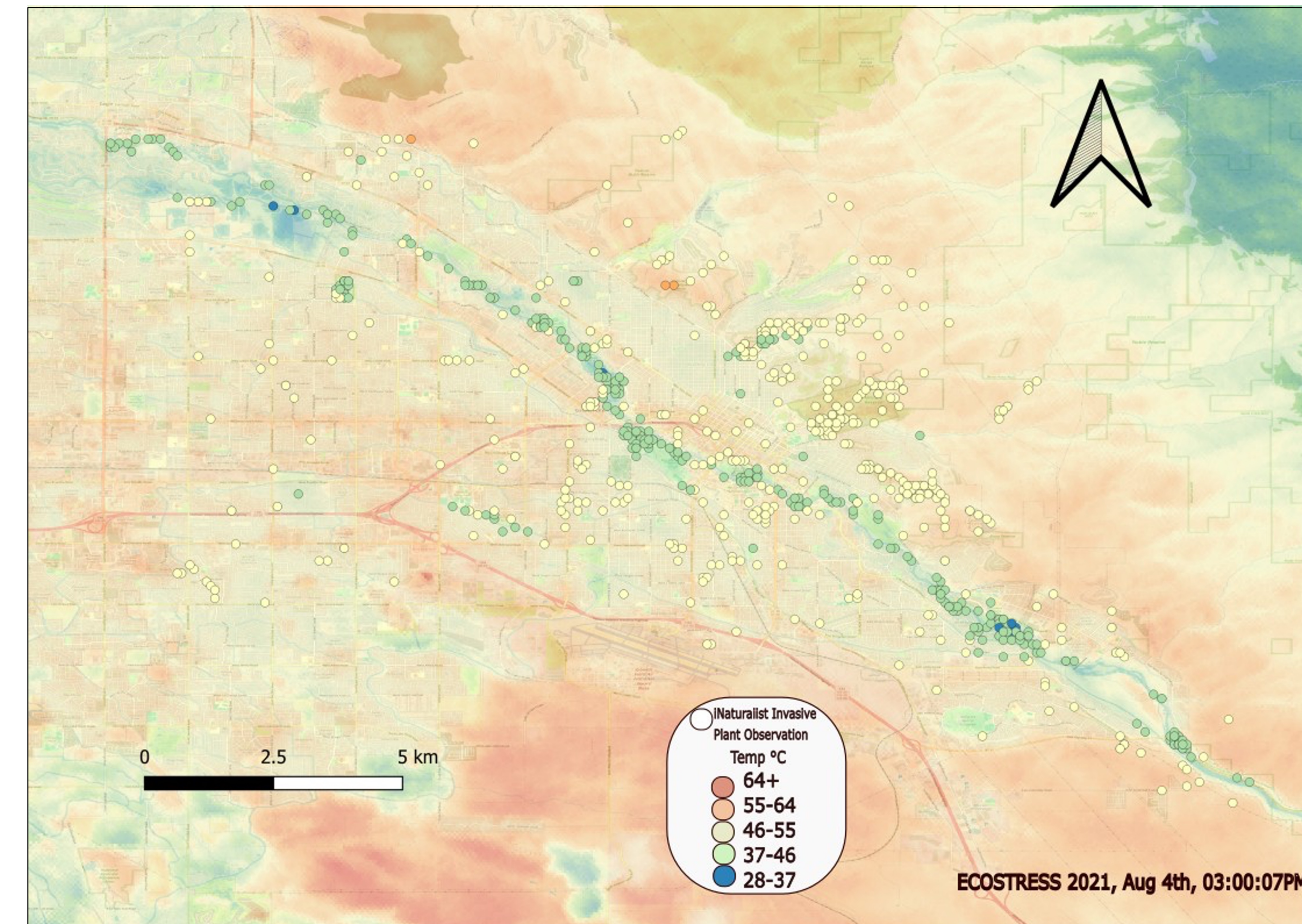
Leveraging ECOSTRESS at Micro and Macro Scales through Community Science Data



Richard Rachman*, T. Trevor Caughlin, PhD

richardrachman@u.boisestate.edu*

- Cities are getting hotter, and that's changing where invasive species are.
- Invasive species pose economic, cultural, and ecological challenges.
- Community science data, like iNaturalist, provides valuable insights.



Boise, Idaho, ECOSTRESS and iNaturalist Data

Objectives

- Study species homogenization and temperature niche clustering in Western US metropolitan areas.
- Track invasive species composition changes with urban temperature shifts.



Tribulus terrestris, goathead, warm adapted, and *Lythrum salicaria*, purple loosestrife, a wetland invasive species

