

# The GEO Blue Planet Initiative

Linking Ocean and Coastal  
Information with Society

May 24, 2019  
US MBON  
All-Hands Meeting

Emily Smail  
GEO Blue Planet  
NOAA  
University of Maryland

# Group on Earth Observations

Our work

---

## What does GEO do?

GEO's 105 Members governments and 118 Participating Organizations work together to develop and implement Earth observation programmes and initiatives that solve global environmental problems.



# GEO Priorities



UN 2030 Agenda for Sustainable Development



The Paris Agreement on Climate Change



The Sendai Framework for Disaster Risk Reduction



# GEO Work Programme

## GEO Flagships

**GEO Biodiversity  
Observation Network  
(GEO BON)**

**GEO Global  
Agricultural  
Monitoring  
(GEOGLAM)**

**Global Forest  
Observation Initiative  
(GFOI)**

**Global Observation  
System for Mercury  
(GOS4M)**

## GEO Initiatives

**AfriGEOSS:  
Reinforcing Regional  
African Engagement**

**AmeriGEOSS**

**AquaWatch**

**Asia-Oceania GEOSS  
(AOGEOSS)**

**Climate Change  
Impact Observation  
On Africa's Coastal  
Zones (GEO-  
CCIOoACZ)**

**Data Access for Risk  
Management (GEO-  
DARMA)**

**Earth Observations for  
Ecosystem Accounting  
(EO4EA)**

**Earth Observations in  
Service of the 2030  
Agenda for  
Sustainable  
Development**

**EuroGEOSS**

**GEO Carbon and GHG  
Initiative**

**GEO Cold Regions  
Initiative (GEOCRI)**

**GEO Geohazard  
Supersites and Natural  
Laboratories (GSNL)**

**GEO Global Ecosystem  
Initiative (GEO ECO)**

**GEO Global Network  
for Observation and  
Information in  
Mountain  
Environments (GEO-  
GNOME)**

**GEO Global Water  
Sustainability  
(GEOGLOWS)**

**GEO Human Planet  
Initiative: Spatial  
Modeling of Impact,  
Exposure and Access  
to Resources**

**GEO Land Degradation  
Neutrality**

**GEO Vision for Energy  
(GEO-VENER)**

**GEO Wetlands  
Initiative**

**GEO-CRADLE**

**GEOSS-EVOLVE**

**Global Drought  
Information System  
(GDIS)**

**Global Observation  
System for Persistent  
Organic Pollutants  
(GOS4POPS)**

**Global Urban  
Observation and  
Information**

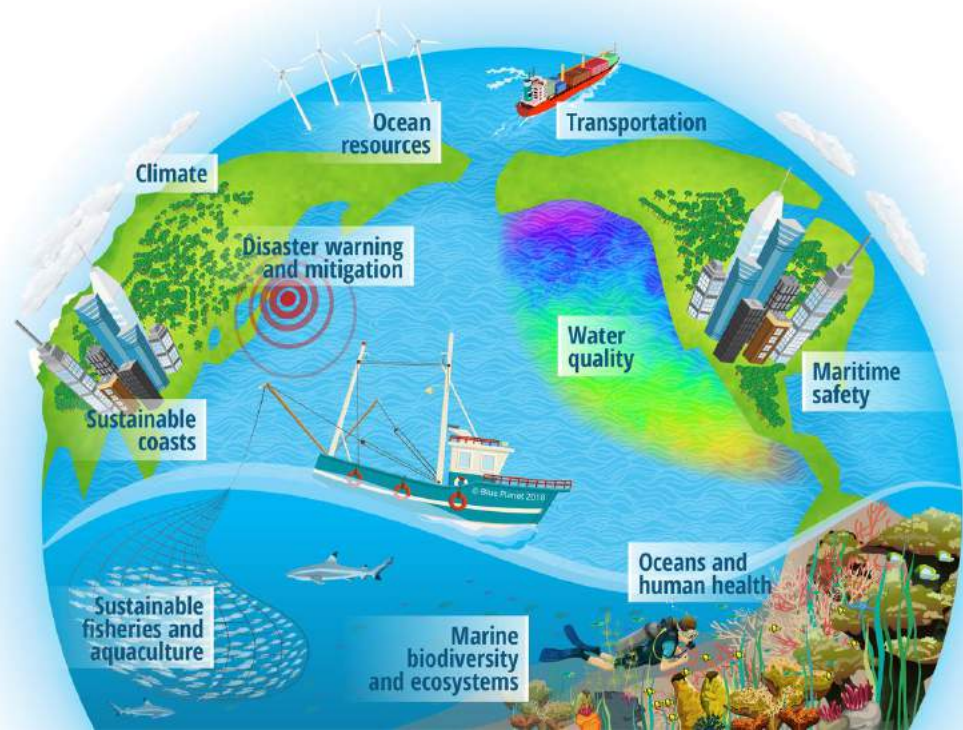
**Global Wildfire  
Information System  
(GWIS)**

**Oceans and Society:  
Blue Planet**

# The GEO Blue Planet Initiative

## Our Mission

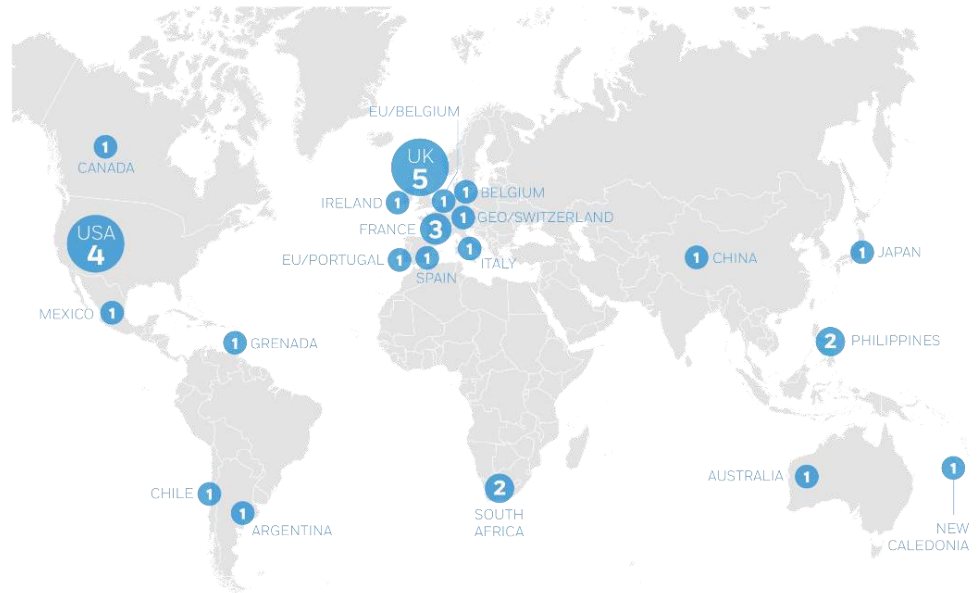
- Advance and **exploit synergies** among the many observational programmes devoted to ocean and coastal waters
- **Improve engagement with** a variety of stakeholders for enhancing the timeliness, quality and range of services delivered
- Raise awareness of the **societal benefits** of ocean observations at the public and policy levels.



# Who is GEO Blue Planet

GEO Blue Planet is a network of ocean and coastal-observers, social scientists and end-user representatives from a variety of stakeholder groups, including international and regional organizations, NGOs, national institutes, universities and government agencies.

## GEO BLUE PLANET STEERING COMMITTEE



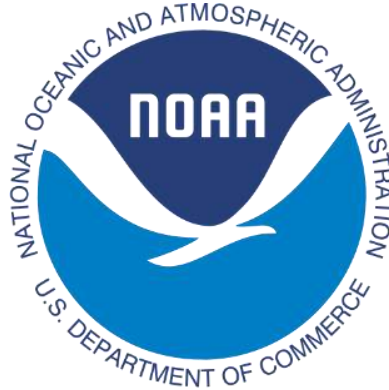
## GEO BLUE PLANET ADVISORY BOARD



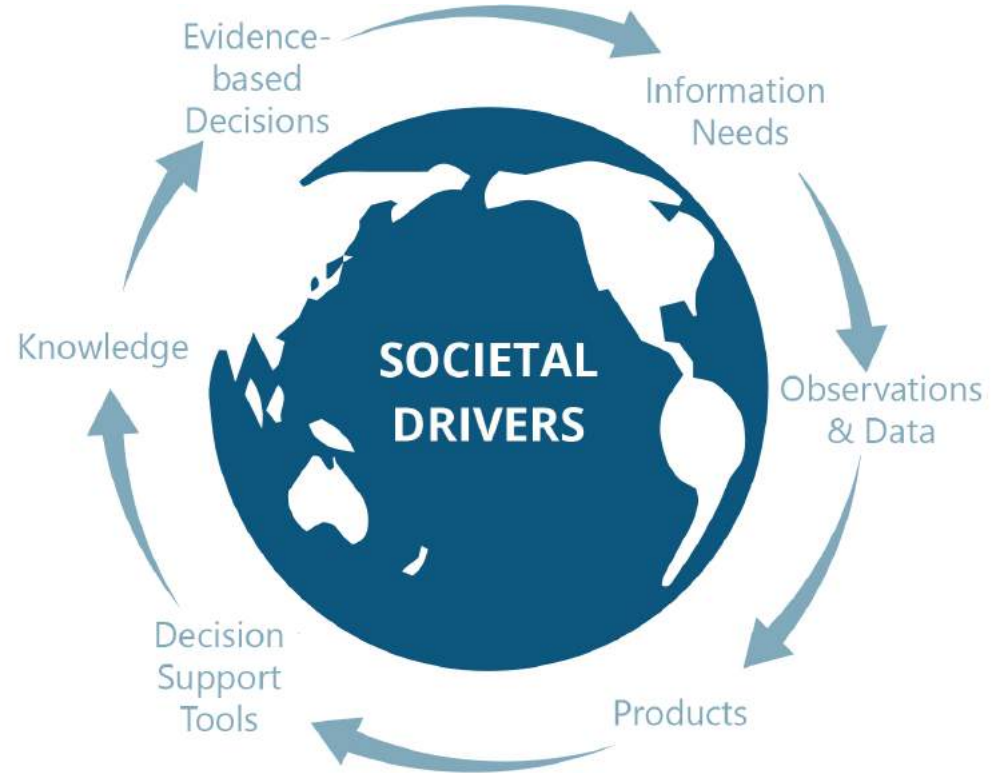
# Who is GEO Blue Planet

Secretariat is funded by NOAA's Satellite Oceanography and Climatology Division and is hosted by the NOAA-UMD Cooperative Institute for Climate and Satellites.

## Secretariat



# Connecting users to providers



**Priority  
activities**



# GEO Blue Planet Symposiums

- Kick-off Symposium - Ilhabela, Brazil, 2012
- 2nd GEO Blue Planet Symposium – Cairns, Australia, 2015
- 3rd GEO Blue Planet Symposium – College Park, MD, USA, 2017
- 4th GEO Blue Planet Symposium – Toulouse, France, 2018



# User Engagement Workshops



# Support of the UN 2030 Agenda for Sustainable Development

- Support custodian agencies with information and methodology development for the SGD



- White paper: Global Platform for Monitoring Marine Litter and Informing Action

# Thematic Projects

## Working Groups

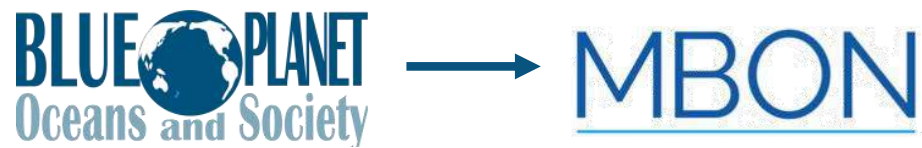
- Marine litter working group
- Earth observations for ecology and epidemiology of water-associated diseases
- Understanding flooding on reef-lined island coasts

## Projects

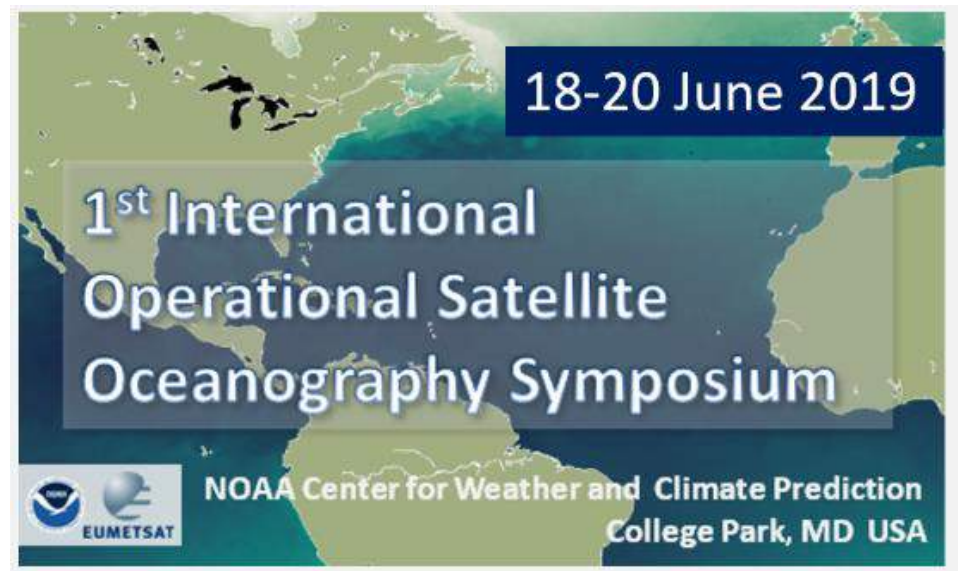
- Multi-hazard information and forecasting system for the wider Caribbean
- Early warning system for marine flooding of reef-lined islands



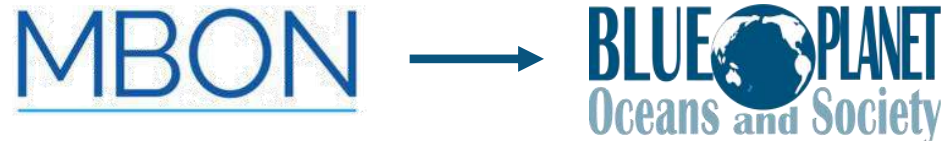
# GEO Blue Planet & MBON



- Support MBON connections with resource management practitioners, social scientists and other stakeholders
- Support Secretariat development
- Support uptake of MBON products by operational agencies
  - Ex: NOAA CoastWatch hosting of MBON seascapes



# GEO Blue Planet & MBON



- Support linkages with GOOS, OBIS, OBPS
- Serves as the biodiversity arm of GEO Blue Planet

# Additional information



geoblueplanet.org



@geoblueplanet



Emily.Smail@noaa.gov

Questions?