

# Enhanced Very-High Resolution (EVHR) Products for NASA's Earth Science Investigators

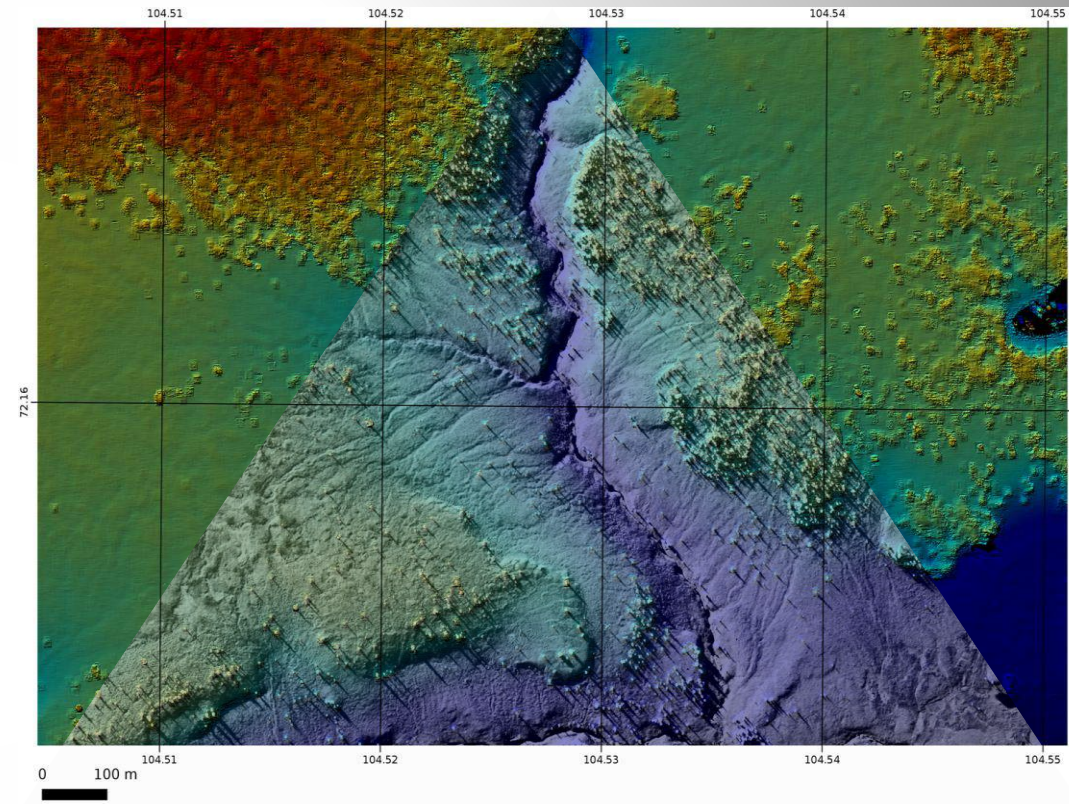
Goddard  
SPACE FLIGHT CENTER

Short project title: EVHR Products

Dr. Christopher Neigh (PI, NASA-GSFC)  
Dr. Mark Carroll (Co-I, SSAI NASA-GSFC)  
Dr. Paul Montesano (Co-I, SSAI NASA-GSFC)  
Dr. Dan Slayback (Co-I, SSAI NASA-GSFC)  
Dr. Alexei Lyapustin (Co-I, NASA-GSFC)  
Dr. Compton Tucker (Co-I, NASA-GSFC)  
Dr. David Shean (Co-I, Univ. of Washington)  
Dr. Oleg Alexandrov (Co-I, SGT NASA-ARC)  
Matthew Macander (Co-I, ABR)

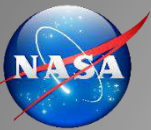
Dr. Scott Geotz (Collaborator, NAU)  
Dr. Gerald Frost (Collaborator, ABR)  
Dr. Jorge Pinzon (Collaborator, SSAI NASA-GSFC)  
Dr. Daniel Duffy (Collaborator, NASA-GSFC)

**\* Margaret Wooten (SSAI, NASA-GSFC)**  
Alfred Hubbard (SSAI, NASA-GSFC)  
William Wagner (SSAI, NASA-GSFC)  
Roger Gill (Inovim, NASA-GSFC)



*Example of a color-shaded relief version of a WorldView DSM overlaid with panchromatic pseudo color orthoimage in northern Siberia. ©DigitalGlobe NextView 2014*





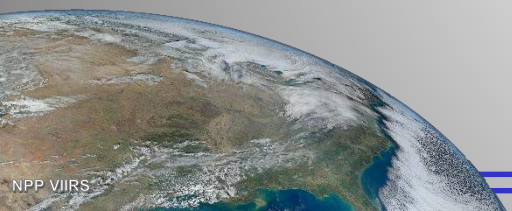
# Outline

## 1) Overview of the Enhanced Very-High Resolution (EVHR) products project

- Current status of “no-direct cost access” to DigitalGlobe data
- Scientist needs for commercial sub-meter data products
- Science products derived from the API
- Project timeline and status

## 2) Examples of how derived products are used in Earth Science (brief literature review)

- Terrestrial ecology
- Cryospheric sciences
- Hydrology
- Training data for thematic mapping classification algorithms
- Validation/site characterization



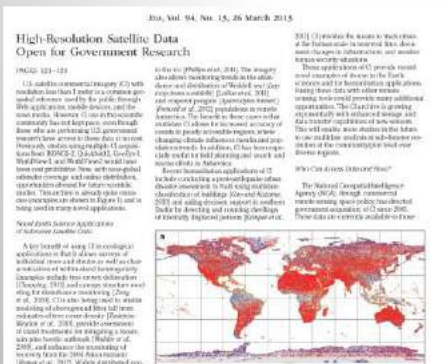


# Background - Why is an API needed?

## Commercial Data Status

1. The volume of commercial sub-meter remotely sensed data is growing at rates exceeding petabytes per year and the costs for data storage systems and computing have both dropped exponentially.
2. US federal contracts and licensing agreements with DigitalGlobe has opened the door for “Big Data” processing to characterize land surface phenomena in HEC environments yet integration into NASA Earth Science has been slow (Neigh *et al.* 2013).

EOS

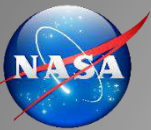


Neigh *et al.* 2013 EOS

## Data are difficult to use by Earth scientists for 3 main reasons:

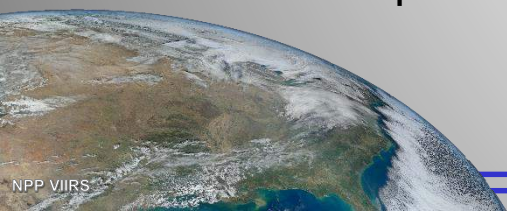
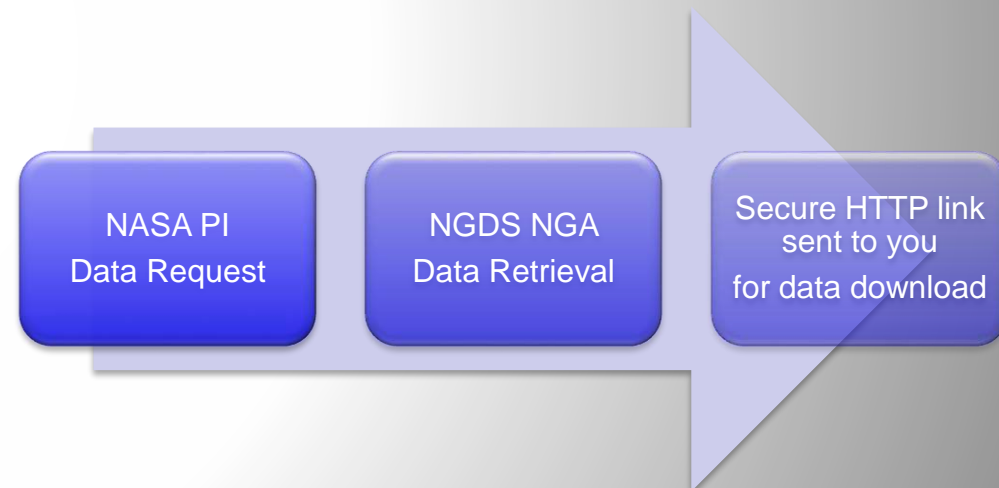
1. most of the very high-resolution (VHR) data received at NASA-GSFC are not in a standard, GIS-ready format, they come in Department of Defense (DOD) National Imagery Transit Format (NITF);
2. the data have poor horizontal and vertical co-registration; and
3. once ortho GeoTiffs are produced the data can have large file sizes (~5 Gigabytes for an individual image at 0.3 m to 30+ Gigabytes for a strip of those images) and require HEC environments to process and analyze many images in an efficient manner.



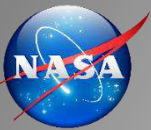


# Access has been provided via NGA to archived DigitalGlobe imagery for use in NASA-funded research

- The National Geospatial-Intelligence Agency's (NGA's) extensive archive of commercial satellite data are available federally-funded users free of direct cost.
- We manage data acquisition for these users, many of whom are university affiliates without access to interfaces such as NGDS.
- Users register on our site, we verify NASA grant information for non-NASA users, provide license information and a data use agreement. Users are provided passwords that allow for data request submission, which we fill once signed DUAs are provided.
- Currently: 300+ registered users, over 8 years we have fielded > 400 user requests that have resulted in > 40 publications.







# Background /Abstract Cont.

From our 8 years of experience delivering these data to NASA funded PI's, a bottleneck exists that impedes two common uses of these data:

- 1) Individual scenes for evaluation and validation of coarser resolution NASA EO products; and
- 2) Analyses of VHR scenes to quantify environmental phenomena with object-based classification or 3D-reconstruction from one of many individual VHR scenes.

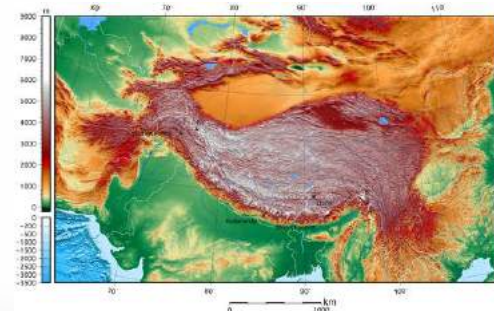
The target audience is broadly the community of NASA-funded Earth scientists, specifically scientists funded through ABoVE, HiMAT, and registered users of [cad4nasa.gsfc.nasa.gov](http://cad4nasa.gsfc.nasa.gov). Access to the VHR data is limited to NASA-funded researchers so we are targeting the ABoVE and HiMAT communities that are already users of the ADAPT system.



<https://above.nasa.gov/>



<http://cad4nasa.gsfc.nasa.gov>

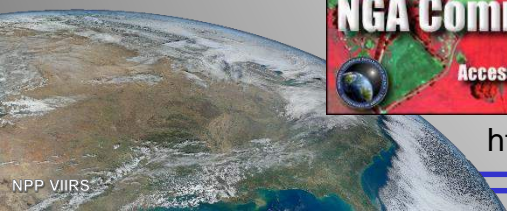


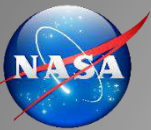
[himat.org](http://himat.org)



Advanced Data Analytics Platform (ADAPT)

<https://www.nccs.nasa.gov/services/adapt>





# DigitalGlobe Data Licensing and Copyrights



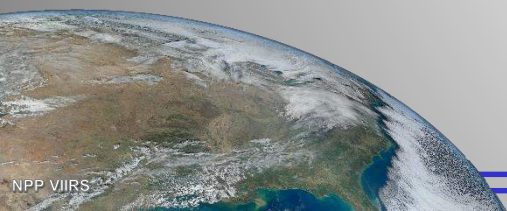
## **NextView License**

- U.S. Government including, all branches, departments, agencies, and offices
- Temporary Licensed Users :
  - State Governments
  - Local Governments
  - Foreign Governments and inter-governmental organizations
  - NGO's and other non-profit organizations

**All high-resolution commercial satellite imagery purchased by NGA is NextView licensed.**

USG may provide the imagery to the above organizations when collaborating on an official purpose.

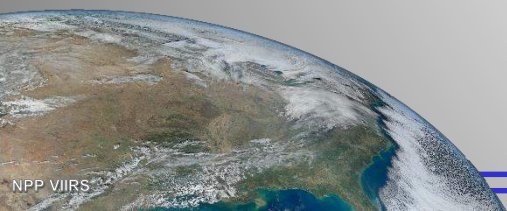
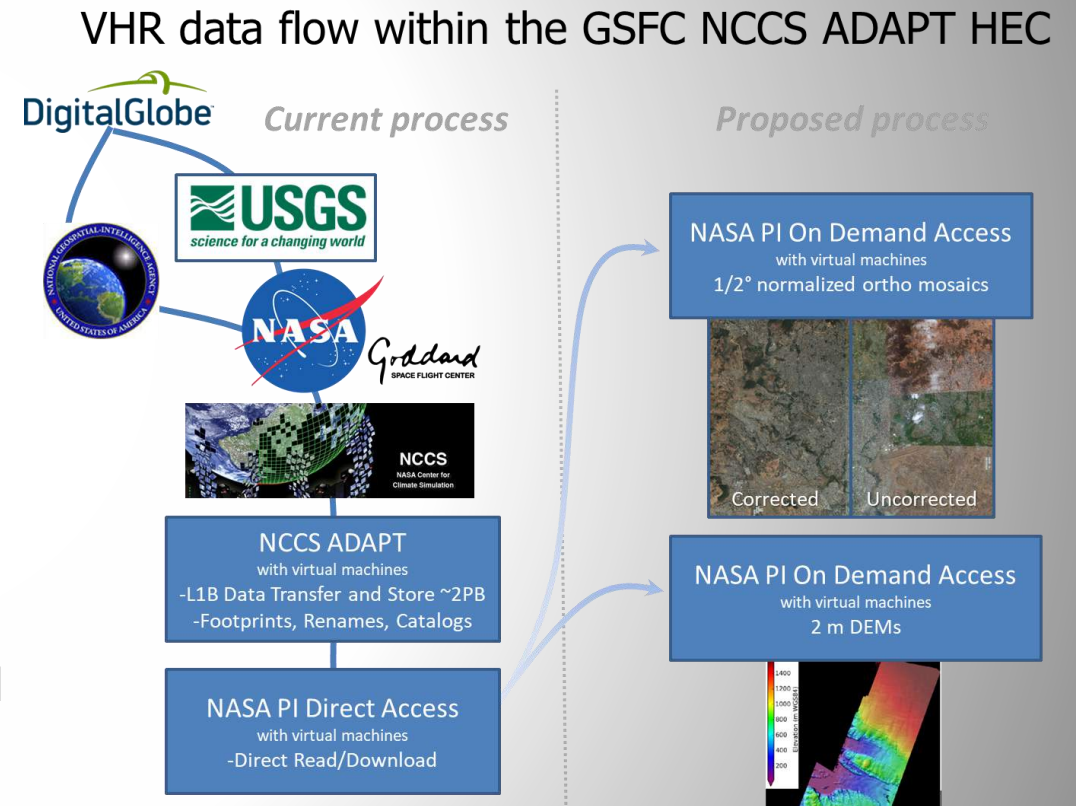
More information available here: <https://cad4nasa.gsfc.nasa.gov/images/NGA-NextView-License.png>



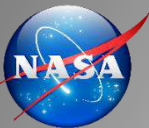
Our work seeks to provide tools as an Application Program Interface (API) for mass processing spatially contiguous and temporally consistent archived NASA-GSFC DG VHR data that can only efficiently be performed on NASA HEC resources due to DG-NGA licensing limitations and computational requirements.

## Our objectives are to:

- 1. Improve VHR data querying:** using databases and ArcGIS mosaic datasets within NASA-GSFC's ADAPT global archive of DG VHR imagery;
- 2. Produce on demand VHR regional mosaics:** automating estimates of surface reflectance, ortho-rectifying and normalizing 1 m mosaics for pan and 2 m for multi-spectral; and
- 3. Produce on demand 2 m posting DEMs:** leveraging HEC processing and open source NASA-Ames software.

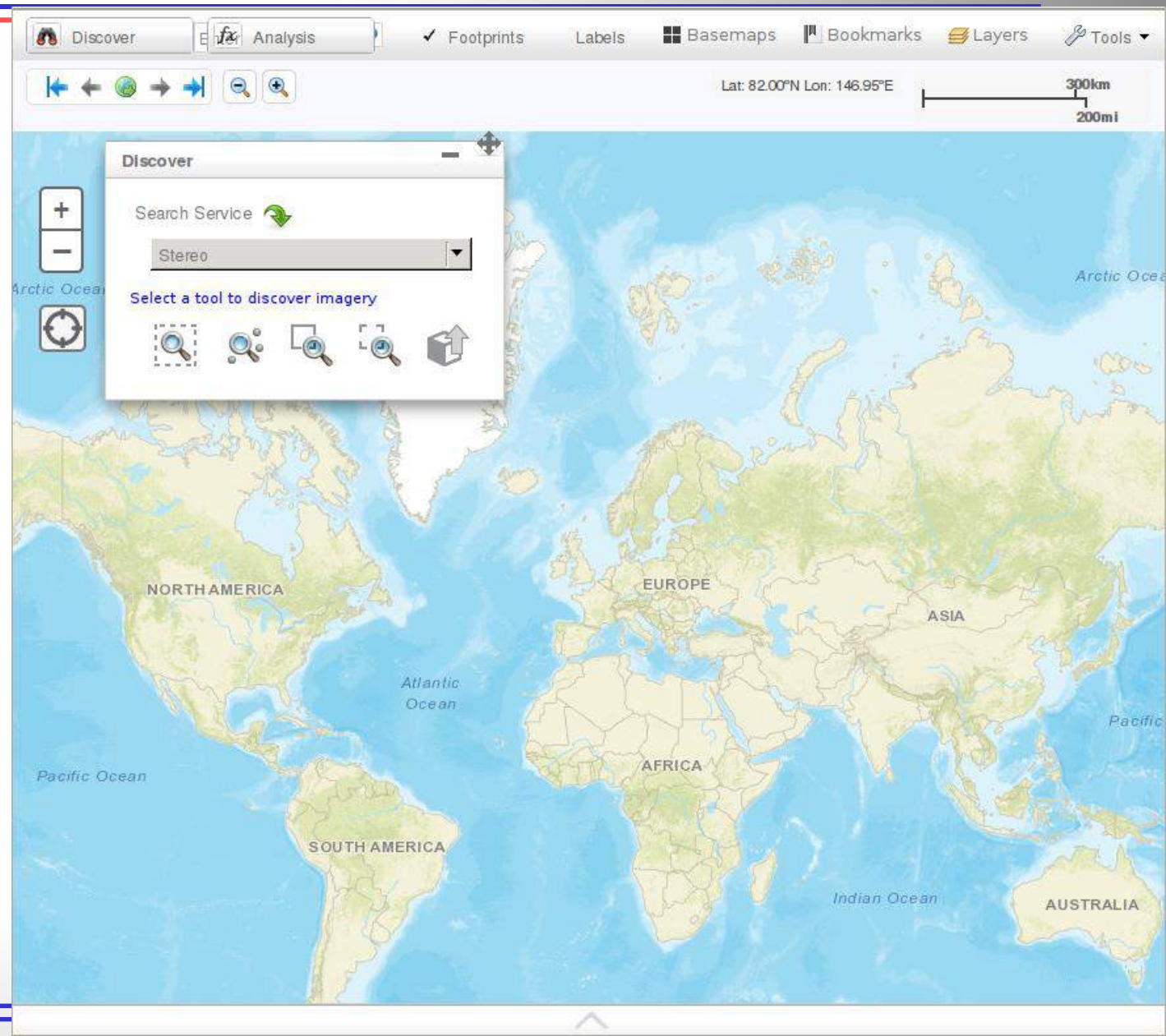




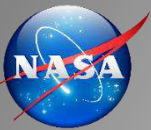


# Automated Database

- Querying from a firefox browser on ADAPT:
  - Spatial search on individual image services
  - Preview returned images; filter on attributes.
  - Create selection, and export to CSV or shapefile
  - Query results can be sent to the API



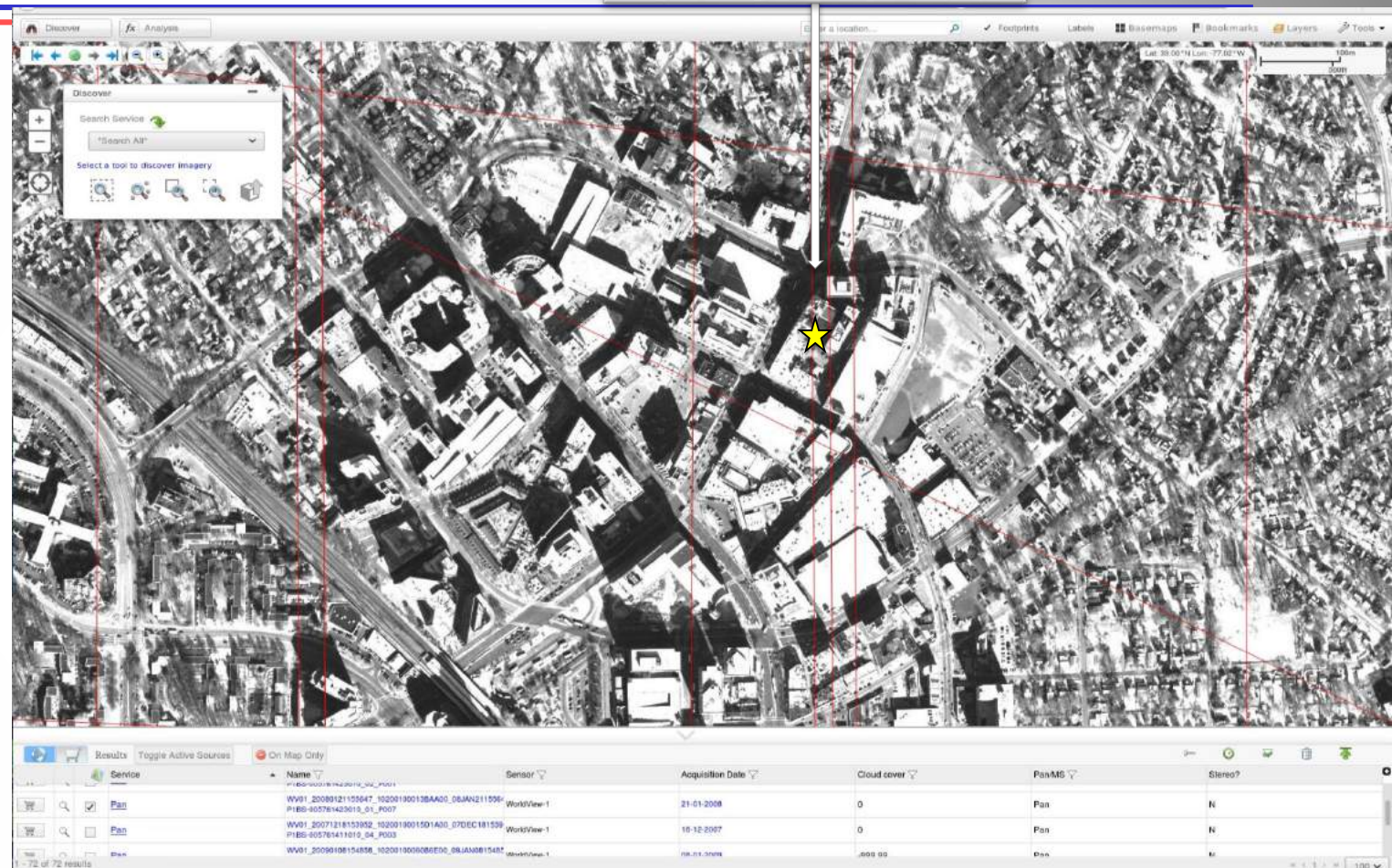




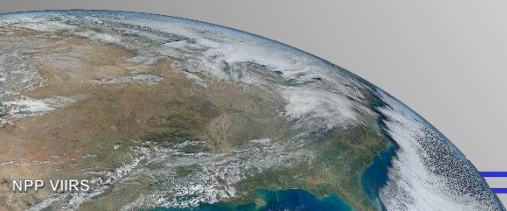
# Automated Database



- Querying from a firefox browser on ADAPT:
  - Spatial search on individual image services
  - Preview returned images; filter on attributes.
  - Create selection, and export to CSV or shapefile
  - Query results can be sent to the API



©DigitalGlobe NextView 2008

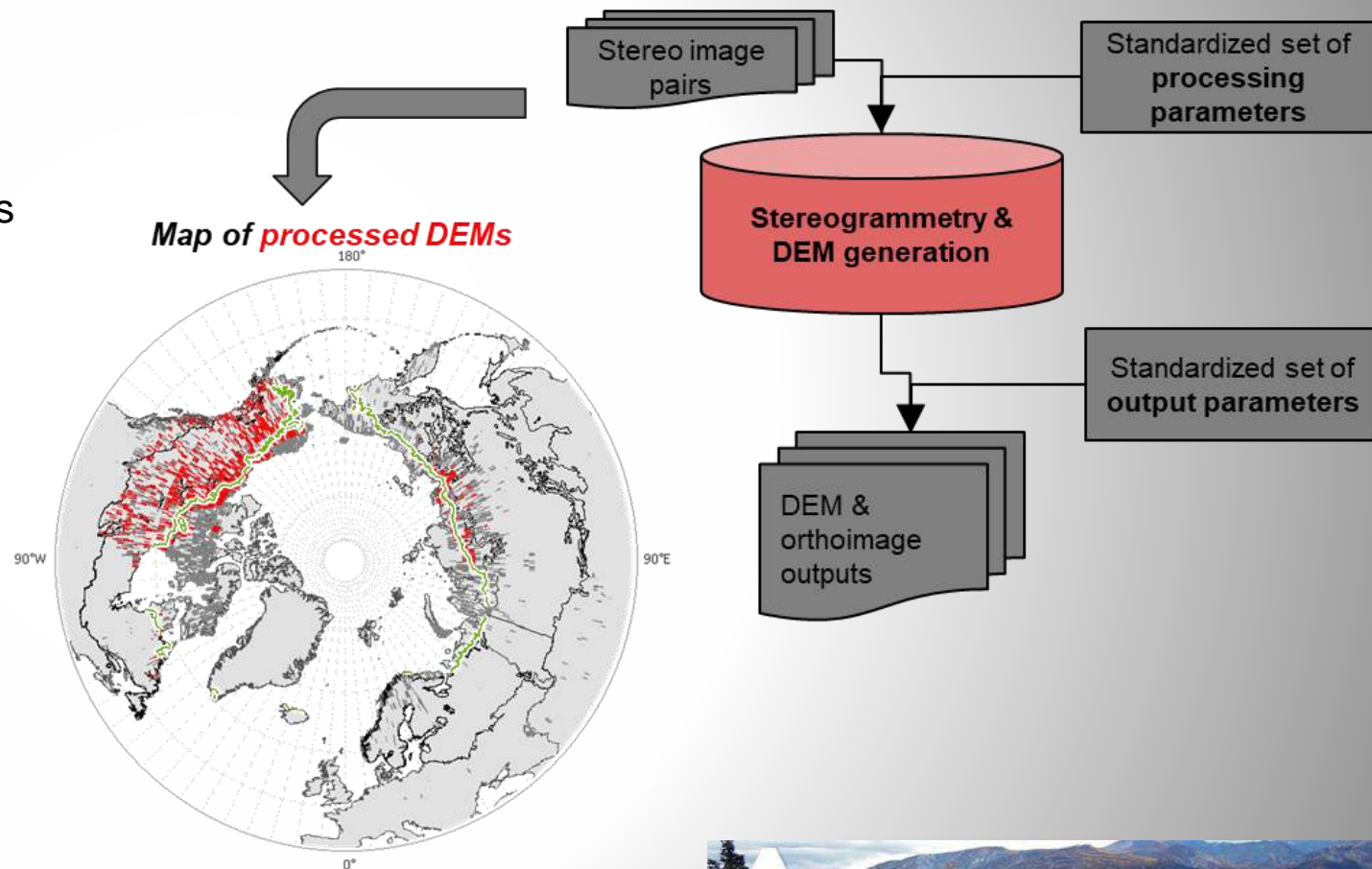




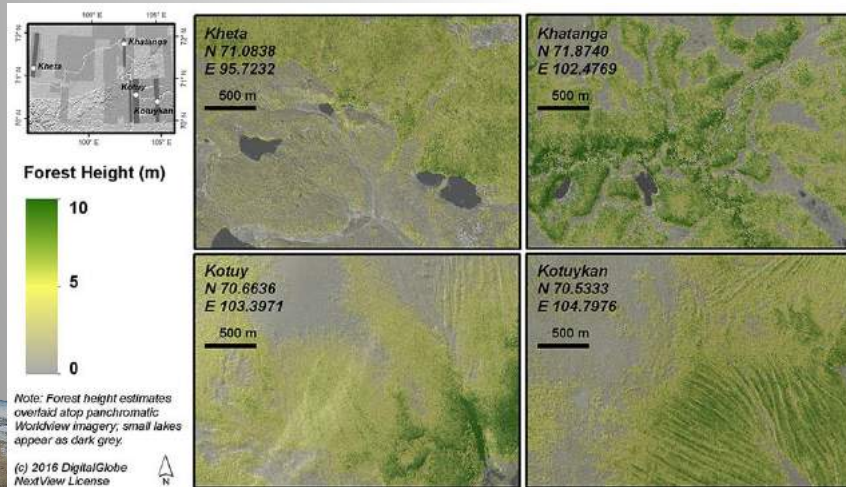
**Standardize** the processing of the image pairs returned from data queries:

- Incorporate lessons learned from **7,000+** DEMs processed using **14,000+** image strip pairs.
- Use tested parameters to maximize efficiency.

## DEM workflow



## Co-I Montesano Hi-Res DEM processing for TE NASA CCS



Montesano, Neigh et al. RSE 2017



<https://above.nasa.gov/>



# DEM Workflow: cont. linking scientists with developers

**Optimize** the workflow on the NCCS **ADAPT** linux cluster (Co-I Dan Duffy)

- facilitate on-demand processing of imagery for study sites
- increase processing speed & efficiency, maximizing the use of HEC

**The workflow will benefit from interaction between scientists & developers**

- To guide on-going software updates
- To inform software functionality based on science objectives.

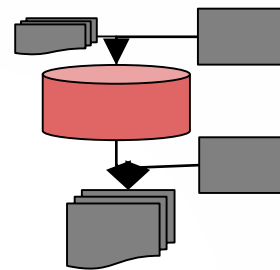
The NASA Ames Stereo Pipeline (Co-I Oleg Alexandrov)

- stereogrammetry routines for processing DigitalGlobe image pairs

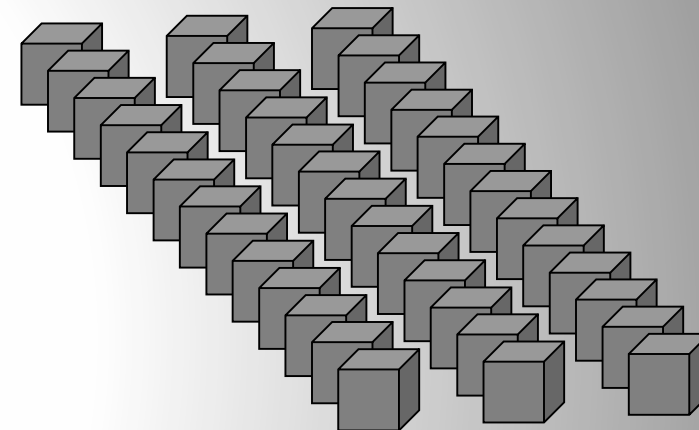
Python & bash scripts (Co-I David Shean)

- wrapper scripts to optimize the stereogrammetry workflow

DEM workflow

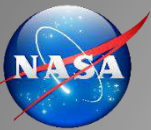


ADAPT linux cluster



*Shean, Alexandrov et al. P&RS 2016*





# Technical Development Overview

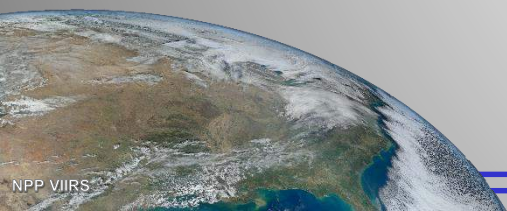


We have found through our own research that VHR data provide a wealth of site level information that enhances NASA Earth observation products and scientific results.

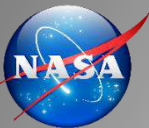
**Our work builds on the significant progress** from previous work supported by NASA's Programs:

- Terrestrial Ecology (TE)
- Carbon Cycle Science (CCS)
- Interdisciplinary Science (IDS)
- Cryospheric Sciences (CS)
- Advancing Collaborative Connections for Earth System Science (ACCESS)
- Land-Cover Land-Use (LCLUC)

Numerous science applications can be performed with science ready VHR products!





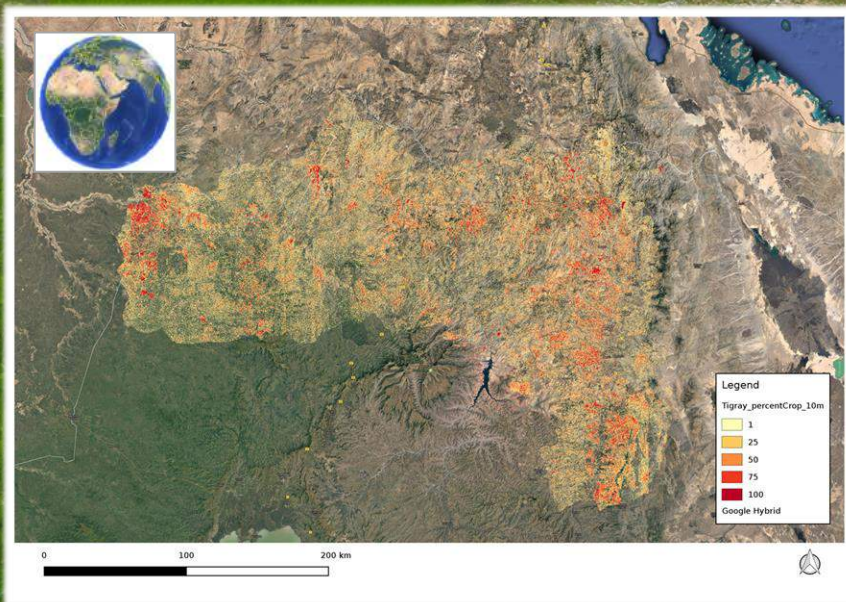


# Science Examples - Mosaics – Interdisciplinary Research in Earth Science

## Sub-hectare agriculture fields mapped for food security programs

Goddard  
SPACE FLIGHT CENTER

August 2016  
Near Ruba Felege Tigray, Ethiopia 13.96N 39.73E  
Photo by B. Powell

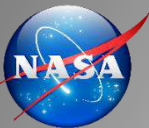


©DigitalGlobe NextView 2014

0 300 m

Global food production in the developing world occurs within sub-hectare fields that are difficult to identify with moderate resolution satellite imagery. Knowledge about the distribution of these fields is critical to food security programs. We developed a semi-automated high-performance computational methodology to rapidly extract cropped area from thousands of WorldView-1, and 2 images for Tigray, Ethiopia using NASA HEC resources.

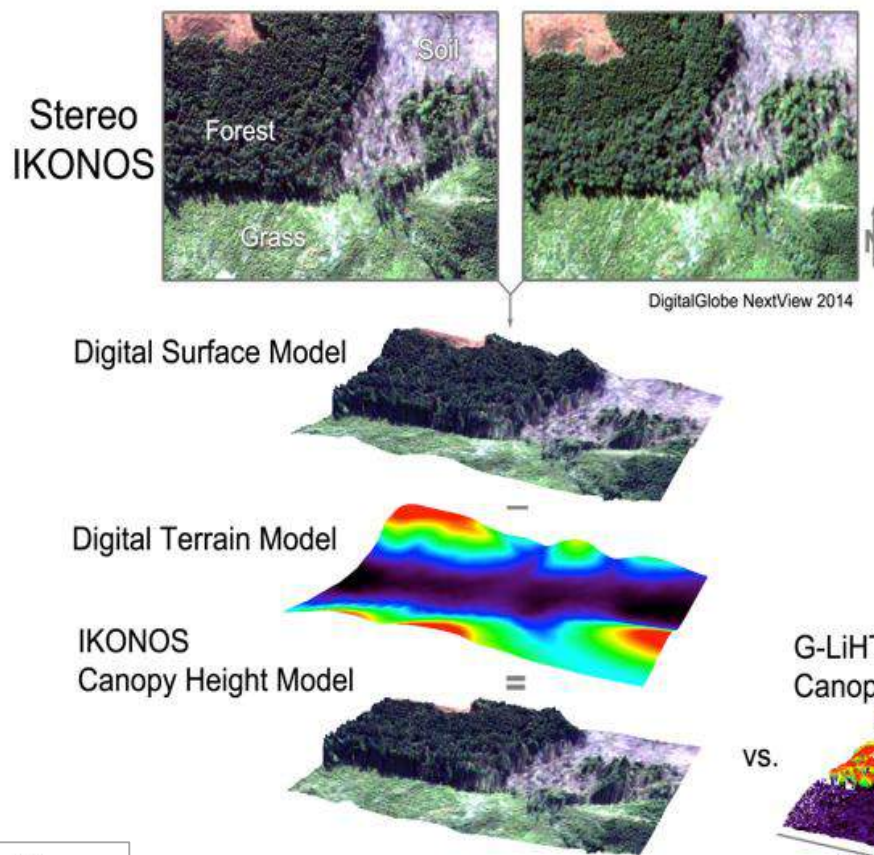




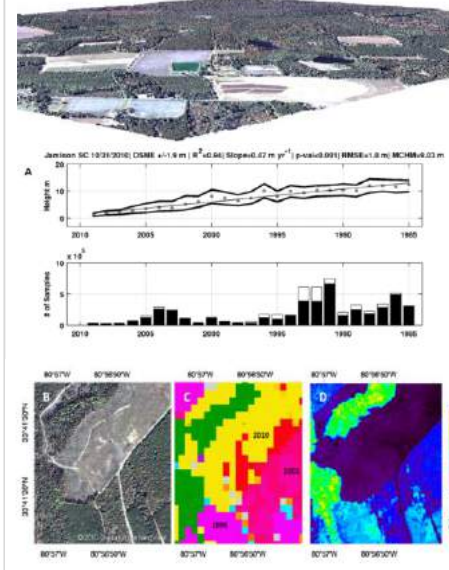
# Science Ex. Cont. – DEM processing – Carbon Cycle Science

## Temperate and boreal forest structure and growth

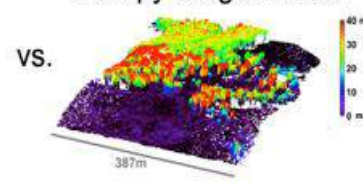
Forest carbon (C) stock is a poorly understood component of the C-cycle. Growth estimates from IKONOS and Landsat are analogous to height and carbon sequestration estimates from field data. IKONOS DEMs were found to be a reasonable alternative to airborne LiDAR. Landsat disturbance history was then used in a space-for-time swap to estimate rates of young forest growth with IKONOS in 20 locations throughout the CONUS.



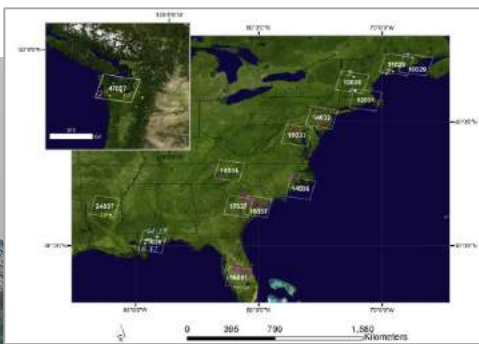
### Very Hi-Res DEM processing



### G-LiHT Canopy Height Model



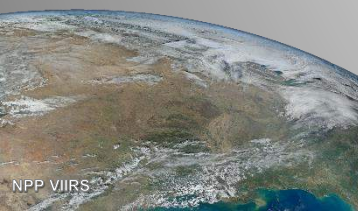
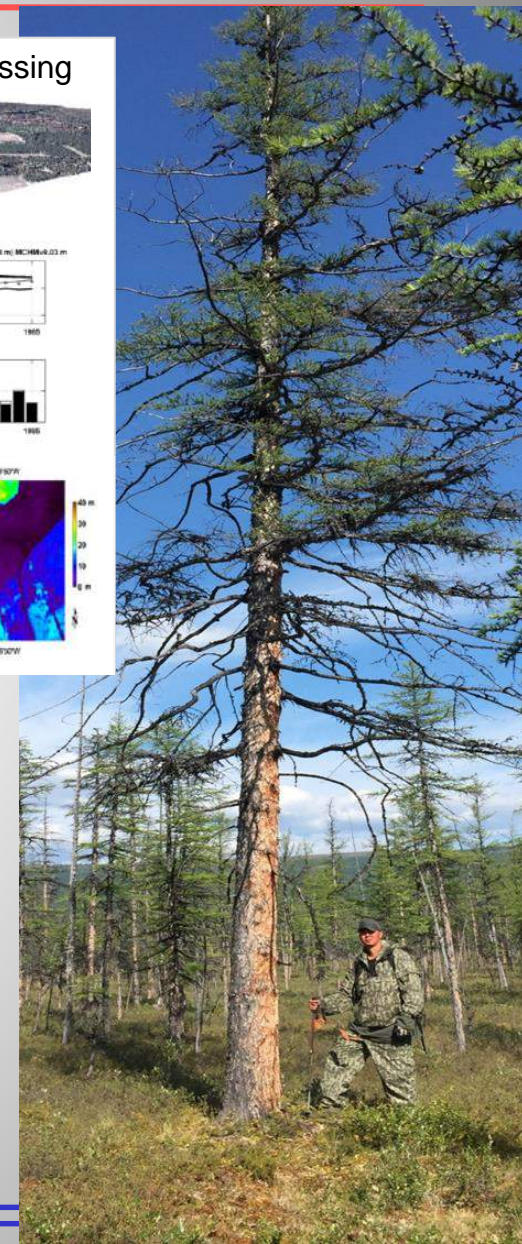
©DigitalGlobe NextView 2010



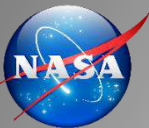
*Neigh et al. 2016 RSE*  
*Neigh et al. 2014 RS*



<https://www.nacarbon.org/>







# Science Ex. Cont. – DEMs – Calibration/Validation SBG/HyspIRI/EO-1 Hyperion Missions

Can high-resolution commercial data be used to understand sub 30 m pixel variability in Hyperion data in the Libya-4 Pseudo Invariant Calibration Site (PICS)?

3D Surface View of Subset Area

Hyperion True Color Convolved 8/09/12

Red 630-690 nm

Green 510-580 nm

Blue 450-510 nm

Cubic Convolution 2m

WorldView-2 True Color 8/12/12

Red Band 5 630-690nm

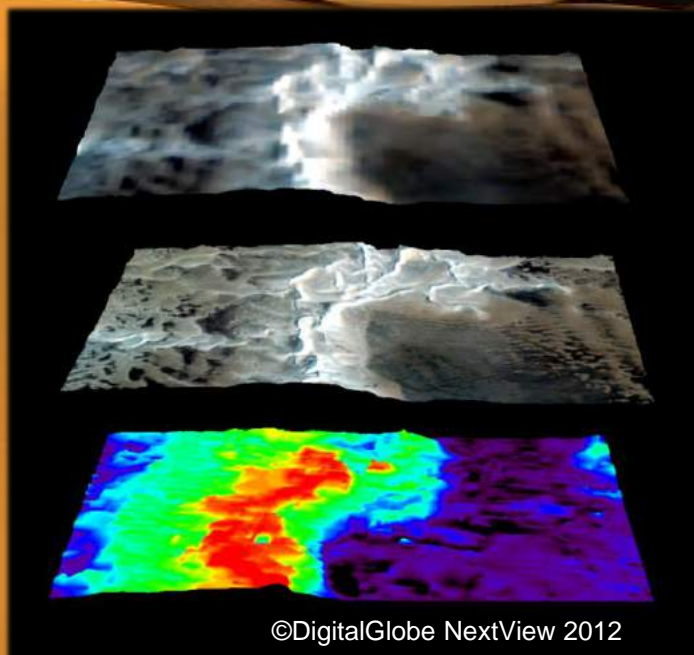
Green Band 3 510-580nm

Blue Band 2 450-510 nm

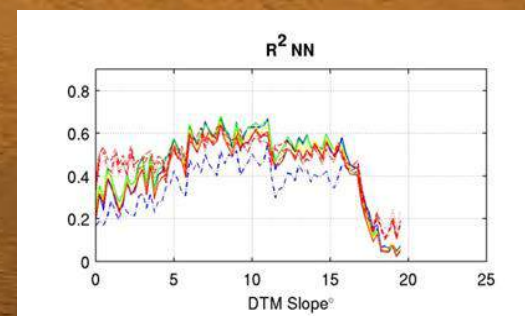
2m

WorldView-2 – WorldView-1

2m Digital Terrain Model



Elevation and slope have a strong influence on WV-2 band agreement with Hyperion data, ranging from low agreement at dune tops ( $R^2 < 0.05$ ) to higher agreement in sand flats ( $R^2 > 0.6, P < 0.001$ ). RMSEs increase with height as well.

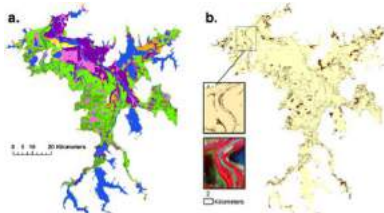




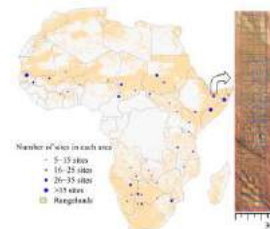
# Additional Projects/Data Use for Science

Small scale changes in Hydrology – PI Gong (NESSF)

[Dronova et al. 2015 RSE](#)

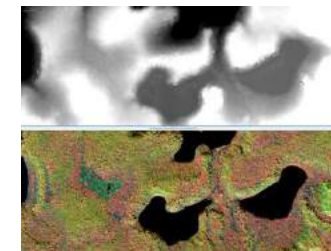


Analysis of woody vegetation properties and change across African savannas – PI Hanan (TE) [Axelsson et al. 2018 JB](#)



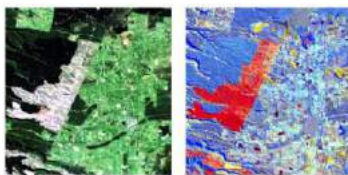
Validation of Landsat Tree Canopy Cover – PI Ranson (CCS)

[Montesano et al. 2016 RS](#)



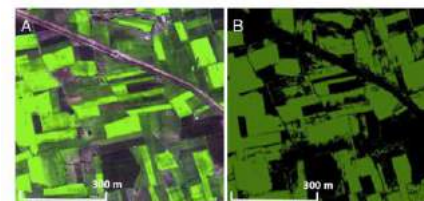
Disturbance analysis in New Zealand, mapping validation – PI (LCLUC)

[de Beurs et al. 2016 IJAEOG](#)



Mapping Cropping Intensity in Gujarat, India – PI DeFries (LCLUC)

[Jain et al. 2013 RSE](#)



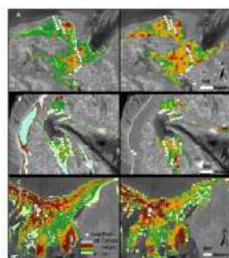
Validation of paddy rice planting expansion in NE China– PI Dong (LCLUC)

[Dong et al. 2015 RSE](#)



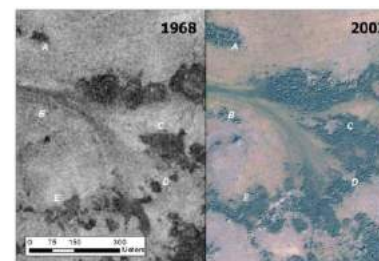
Mangrove canopy height estimation for blue carbon – PI Fatoyinbo (TE – CMS)

[Lagomasino et al. 2016 RS](#)



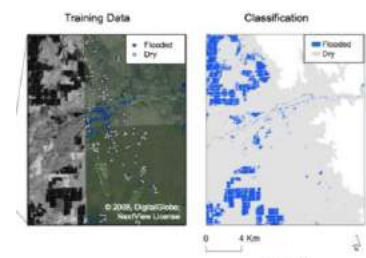
Tall shrub and tree expansion in NW Siberian Tundra – PI Walker (LCLUC)

[Frost et al. 2014 ERL](#)

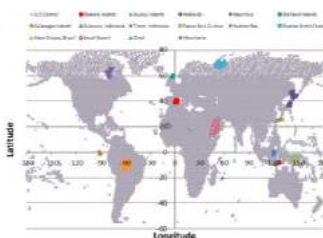


Training data for habitat mapping for shorebirds in California– PI Swenson (NESSF)

[Schaffer-Smith et al. 2017 RSE](#)



Landsat 8 Ground Control Point (GCP) improvements with WorldView – PI Storey (Landsat Science Team)

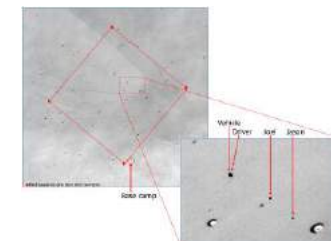


LCLUC in southern Ghana, validation – PI Stow (LCLUC)

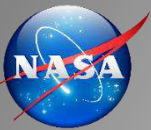
[Coulter et al. 2016 RSE](#)



Characterizing a Cal/Val site in Bolivia – PI McCorkel (Landsat Science Team)



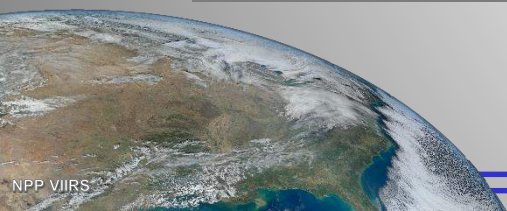


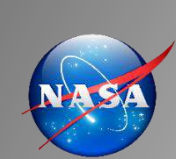


# Science / ESD Value

**There is a pool of scientists that could potentially benefit from the 3+ Petabytes of VHR data stored on ADAPT who are currently not using it.**

- ABoVE has > 71 funded/affiliated projects with > 430 participants, of which 38 projects and 82 individuals have requested access to VHR data. Improvements in the ease of use of the VHR data would increase the usage among this group of potential users (personal communication Dr. Elizabeth Hoy NASA ABoVE management team).
- HiMAT has > 80 scientists and has recently been funded to develop VHR DEMs for central Asia (Co-I Shean). This group is also beginning to use ADAPT for systematic analysis of data. The API would be of direct benefit to these two groups of ADAPT users.
- Pending success with these existing users there could be future expansion to users that are not currently in ADAPT such as those who are registered (300+ users from multiple NASA programs) through <https://cad4nasa.gsfc.nasa.gov>.





# Thank You

- Axelsson, C.R., & Hanan, N.P. (2018). Rates of woody encroachment in African savannas reflect water constraints and fire disturbance. *Journal of Biogeography*, 1-10.
- Coulter, L.L., Stow, D.A., Tsai, Y.H., Ibanez, N., Shih, H.C., Kerr, A., Benza, M., Weeks, J.R., & Mensah, F. (2016). Classification and assessment of land cover and land use change in southern Ghana using dense stacks of Landsat 7 ETM + imagery. *Remote Sensing of Environment*, 184, 396-409.
- de Beurs, K.M., Owsley, B.C., & Julian, J.P. (2016). Disturbance analyses of forests and grasslands with MODIS and Landsat in New Zealand. *International Journal of Applied Earth Observation and Geoinformation*, 45, 42-54.
- Dong, J.W., Xiao, X.M., Kou, W.L., Qin, Y.W., Zhang, G.L., Li, L., Jin, C., Zhou, Y.T., Wang, J., Biradar, C., Liu, J.Y., & Moore, B. (2015). Tracking the dynamics of paddy rice planting area in 1986-2010 through time series Landsat images and phenology-based algorithms. *Remote Sensing of Environment*, 160, 99-113.
- Dronova, I., Gong, P., Wang, L., & Zhong, L.H. (2015). Mapping dynamic cover types in a large seasonally flooded wetland using extended principal component analysis and object-based classification. *Remote Sensing of Environment*, 158, 193-206.
- Frost, G.V., Epstein, H.E., & Walker, D.A. (2014). Regional and landscape-scale variability of Landsat-observed vegetation dynamics in northwest Siberian tundra. *Environmental Research Letters*, 9.
- Jain, M., Mondal, P., DeFries, R.S., Small, C., & Galford, G.L. (2013). Mapping cropping intensity of smallholder farms: A comparison of methods using multiple sensors. *Remote Sensing of Environment*, 134, 210-223.
- Lagomasino, D., Fatoyinbo, T., Lee, S., Feliciano, E., Trettin, C., & Simard, M. (2016). A Comparison of Mangrove Canopy Height Using Multiple Independent Measurements from Land, Air, and Space. *Remote Sensing*, 8.
- McCarty, J.L., Neigh, C.S.R., Carroll, M.L., & Wooten, M.R. (2017). Extracting smallholder cropped area in Tigray, Ethiopia with wall-to-wall sub-meter WorldView and moderate resolution Landsat 8 imagery. *Remote Sensing of Environment*, 202, 142-15. [10.1016/j.rse.2017.06.040](https://doi.org/10.1016/j.rse.2017.06.040)
- Montesano P.M., Neigh C.S.R., Sexton J., Feng M., Channan S., Ranson K.J., and Townshend J.R. (2016) Calibration and Validation of Landsat Tree Cover in the Taiga-Tundra Ecotone. *Remote Sensing*, 8, 551. [10.3390/rs8070551](https://doi.org/10.3390/rs8070551)
- Montesano, P., Neigh, C.S.R., Sun, G., Duncanson, L.I., Van Den Hoek, J., & Ranson, J. (2017). The use of sun elevation angle for stereogrammetric boreal forest height in open canopies. *Remote Sensing of Environment*, 196, 76-88. [10.1016/j.rse.2017.04.024](https://doi.org/10.1016/j.rse.2017.04.024)
- Neigh C.S.R., Masek J., and Nickeson J. (2013) High Resolution Satellite Data Open to Government Scientists. *AGU EOS Transactions* 94 (13), 121-123. [10.1002/2013EO130002](https://doi.org/10.1002/2013EO130002)
- Neigh, C., Masek, J., Bourget, P., Cook, B., Huang, C., Rishmawi, K., & Zhao, F. (2014). Deciphering the Precision of Stereo IKONOS Canopy Height Models for US Forests with G-LiHT Airborne LiDAR. *Remote Sensing*, 6, 1762-1782. [10.3390/rs6031762](https://doi.org/10.3390/rs6031762)
- Neigh, C.S.R., McCorkel, J., & Middleton, E.M. (2015). Quantifying Libya-4 Surface Reflectance Heterogeneity With WorldView-1, 2 and EO-1 Hyperion. *IEEE Geoscience and Remote Sensing Letters*, 12, 2277-2281. [10.1109/LGRS.2015.2468174](https://doi.org/10.1109/LGRS.2015.2468174)
- Neigh, C.S.R., McCorkel, J., Campbell, P.K.E., Ong, L., Ly, V., Landis, D., & Middleton, E.M. (2016). Monitoring Orbital Precession of EO-1 Hyperion With Three Atmospheric Correction Models in the Libya-4 PICS. *Ieee Geoscience and Remote Sensing Letters*, 13, 1797-1801. [10.1109/lgrs.2016.2612539](https://doi.org/10.1109/lgrs.2016.2612539)
- Neigh, C.S.R., Masek, J.G., Bourget, P., Rishmawi, K., Zhou, F., Huang, C., Cook, B., & Nelson, R.F. (2016). Regional rates of young US forest growth estimated from annual Landsat disturbance history and IKONOS stereo imagery. *Remote Sensing of Environment*, 173, 282-293. [10.1016/j.rse.2015.09.007](https://doi.org/10.1016/j.rse.2015.09.007)
- Neigh, C.S.R., Carroll, M., Wooten, M.R., Powell, B., McCarty, J.L., Husak, G.J., Enenkel, M., & Hain, C. (2018). Smallholder crop area mapped with wall-to-wall WorldView sub-meter panchromatic image texture: a test case for Tigray, Ethiopia. *Remote Sensing of Environment*, 212, 8-20. [10.1016/j.rse.2018.04.025](https://doi.org/10.1016/j.rse.2018.04.025)
- Schaffer-Smith, D., Swenson, J.J., Barbaree, B., & Reiter, M.E. (2017). Three decades of Landsat-derived spring surface water dynamics in an agricultural wetland mosaic; Implications for migratory shorebirds. *Remote Sensing of Environment*, 193, 180-192.
- Shean, D.E., Alexandrov, O., Moratto, Z., Smith, B., Joughin, I.R., Porter, C., & Morin, P. (2016). An automated, open-source pipeline for mass production of digital elevation models (DEMs) from very-high-resolution commercial stereo satellite imagery. *ISPRS Journal of Photogrammetry and Remote Sensing*, 116 101-11.

